

READ AND FOLLOW ALL SAFETY INSTRUCTIONS!
SAVE THESE INSTRUCTIONS AND DELIVER TO OWNER AFTER INSTALLATION

- To reduce the risk of death, personal injury or property damage from fire, electric shock, falling parts, cuts/abrasions, and other hazards please read all warnings and instructions included with and on the fixture box and all fixture labels.
- Before installing, servicing, or performing routine maintenance upon this equipment, follow these general precautions.
- Installation and service of luminaires should be performed by a qualified licensed electrician.
- Maintenance of the luminaires should be performed by person(s) familiar with the luminaires' construction and operation and any hazards involved. Regular fixture maintenance programs are recommended.
- It will occasionally be necessary to clean the outside of the refractor/lens. Frequency of cleaning will depend on ambient dirt level and minimum light output which is acceptable to user. Refractor/lens should be washed in a solution of warm water and any mild, non-abrasive household detergent, rinsed with clean water and wiped dry. Should optical assembly become dirty on the inside, wipe refractor/lens and clean in above manner, replacing damaged gaskets as necessary.
- **DO NOT INSTALL DAMAGED PRODUCT!** This luminaire has been properly packed so that no parts should have been damaged during transit. Inspect to confirm. Any part damaged or broken during or after assembly should be replaced.
- **Recycle:** For information on how to recycle LED electronic products, please visit www.epa.gov.
- These instructions do not purport to cover all details or variations in equipment nor to provide every possible contingency to meet in connection with installation, operation, or maintenance. Should further information be desired or should particular problems arise which are not covered sufficiently for the purchaser's or owner's purposes, this matter should be referred to Acuity Brands Lighting, Inc.



WARNING
RISK OF ELECTRIC SHOCK

- ✓ Disconnect or turn off power before installation or servicing.
- ✓ Verify that supply voltage is correct by comparing it with the luminaire label information.
- ✓ Make all electrical and grounded connections in accordance with the National Electrical Code (NEC) and any applicable local code requirements.
- ✓ All wiring connections should be capped with UL approved recognized wire connectors.



WARNING
RISK OF BURN

- ✓ Allow lamp/fixture to cool before handling. Do not touch enclosure or light source.
- ✓ Do not exceed maximum wattage marked on luminaire label.
- ✓ Follow all manufacturer's warnings, recommendations and restrictions for: driver type, burning position, mounting locations/methods, replacement and recycling.



CAUTION
RISK OF INJURY

- ✓ Wear gloves and safety glasses at all times when removing luminaire from carton, installing, servicing or performing maintenance.
- ✓ Avoid direct eye exposure to the light source while it is on.



CAUTION
RISK OF FIRE

- ✓ Keep combustible and other materials that can burn, away from lamp/lens.
- ✓ Do not operate in close proximity to persons, combustible materials or substances affected by heat or drying.



CAUTION: RISK OF PRODUCT DAMAGE

- ✓ Never connect components under load.
- ✓ Do not mount or support these fixtures in a manner that can cut the outer jacket or damage wire insulation.
- ✓ Controls for dimming, auto-sensing, or remote control of a luminaire that are not factory-wired to the luminaire must be checked for compatibility with the luminaire prior to installation. LED fixtures must be powered directly off a switched circuit.
- ✓ Unless individual product specifications deem otherwise: Do not restrict fixture ventilation. Allow for some volume of airspace around fixture. Avoid covering LED fixtures with insulation, foam, or other material that will prevent convection or conduction cooling.
- ✓ Unless individual product specifications deem otherwise: Do not exceed fixtures maximum ambient temperature.
- ✓ Only use fixture in its intended location.
- ✓ LED products are Polarity Sensitive. Ensure proper Polarity before installation.
- ✓ Electrostatic Discharge (ESD): ESD can damage LED fixtures. Personal grounding equipment must be worn during all installation or servicing of the unit.
- ✓ Do not touch individual electrical components as this can cause ESD, shorten lamp life, or alter performance.
- ✓ Some components inside the fixture may not be serviceable. In the unlikely event your unit may require service, stop using the unit immediately and contact an ABL representative for assistance.
- ✓ Always read the fixtures complete installation instructions prior to installation for any additional fixture specific warnings.

Please see product specific installation instructions for additional warnings or any applicable FCC or other regulatory statements.

Failure to follow any of these instructions could void product warranties. For a complete listing of product Terms and Conditions, please visit www.acuitybrands.com.

Our Brands

Indoor/Outdoor
Lithonia Lighting
Carandini
Holophane
RELOC
Light Concepts

Indoor Lighting
Gotham
Mark Architectural Lighting
Peerless
Renaissance Lighting
Winona Lighting

Outdoor Lighting
American Electric Lighting
Antique Street Lamps
Hydrel
Tersen

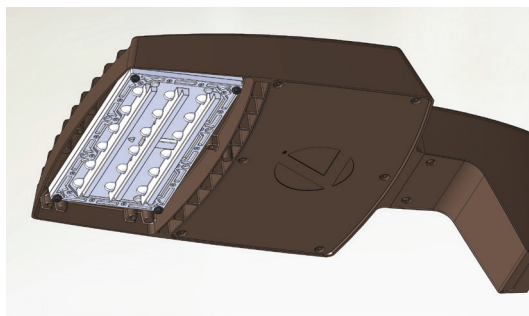
Controls
DARK TO LIGHT
LC&D
ROAM
Sensor Switch
Synergy

Daylighting
SunOptics

Acuity Brands Lighting, Inc. assumes no responsibility for claims arising out of improper or careless installation or handling of its products.

ABL LED General Warnings, Form No. 503.203

© 2010 Acuity Brands Lighting, Inc. All rights reserved. 12/01/10



DELIVERY: Upon receipt of fixture and accessories (packed separately), thoroughly inspect for any freight damage. All damage should be reported to the delivery carrier. Compare the catalog description listed on the packing slip with the fixture label on the inside of the housing to be sure you have received the correct merchandise.

This device complies with Part 15 of the FCC Rules. Operation is subject to the following two conditions: (1) this device may not cause harmful interference, and (2) this device must accept any interference received, including interference that may cause undesired operation.

RSX Bird-Deterrent Spikes (Ship separately)

Tools required: 5/16" Nut Driver

1. Remove the bird spikes and mounting screws from the box. The BS option requires factory pre-drilled holes and must be ordered with the luminaire in order to install this correctly.
2. Lay the RSX face down of the ground if not already installed on the pole. Pre-drilled holes are provided for assembly (See Figure 1).
3. Line up the evenly spaced holes on the bird spikes with the holes in the driver box top and heat sink. Secure the bird spikes to the driver box top with the 10-24 x 3/8" screws provided (See Figure 2). Torque: 25-30 in-lbs.

Figure 1

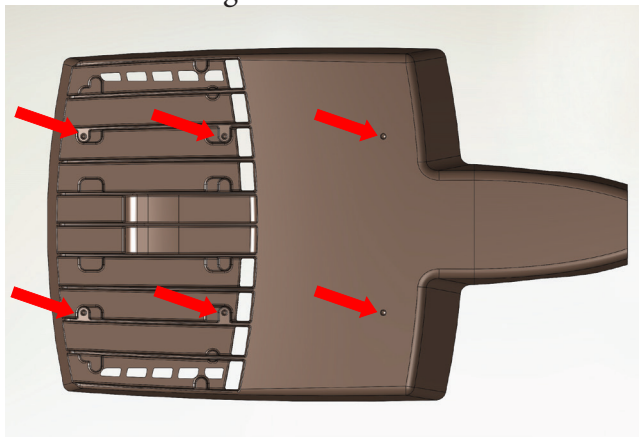


Figure 2

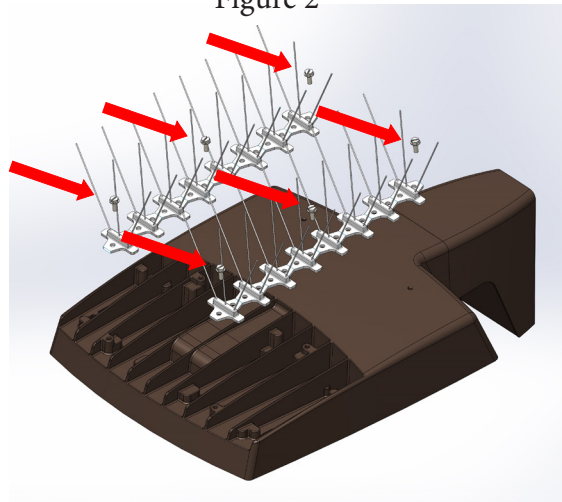
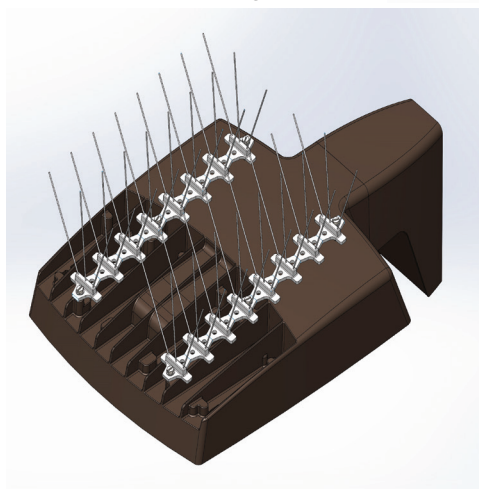


Figure 3



Installation Instructions

RSX LED Accessories

RSX House Side Shield (HS) (Ships separately)

Tools required: 5/32 Allen wrench, 5/16" Socket wrench

1. Remove the (4) outer-most screws and brackets from the light engine and discard. (See Figures 4 & 5)
2. Position House Side Shield over the light engine.
3. Replace the screws removed in step #1 with the supplied 10-24 X 7/8 screws utilizing a 5/16" Nut Driver. Torque: 25-30 in-lbs.
4. RSX1 model shown in illustrations below. For RSX2 or RSX3 repeat step #1 to #3 for second or third HS.

Figure 4

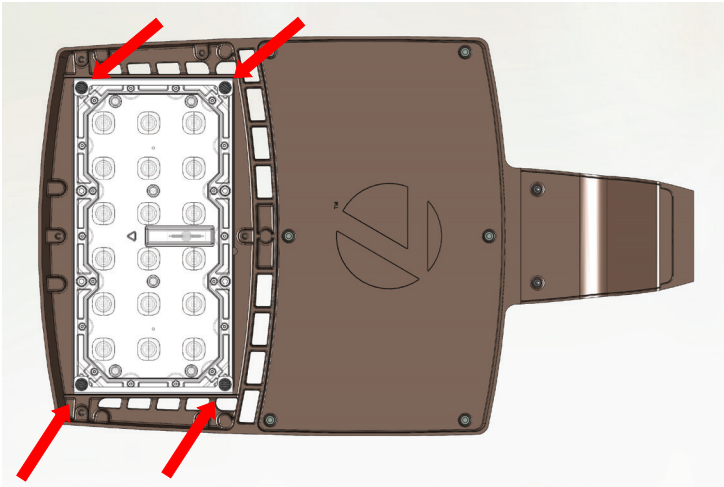


Figure 5

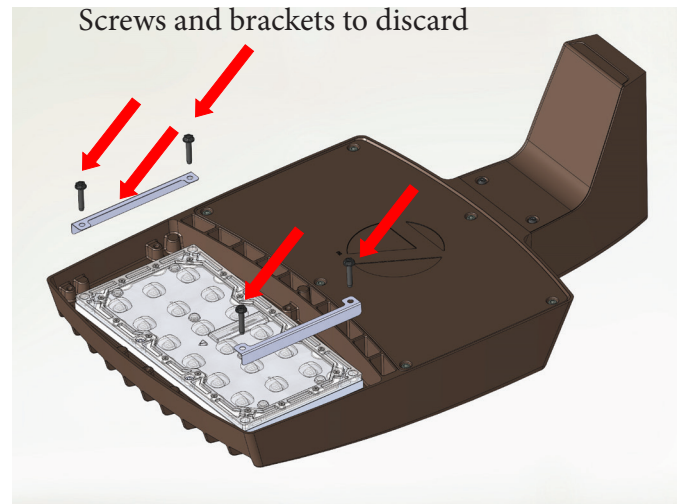


Figure 6

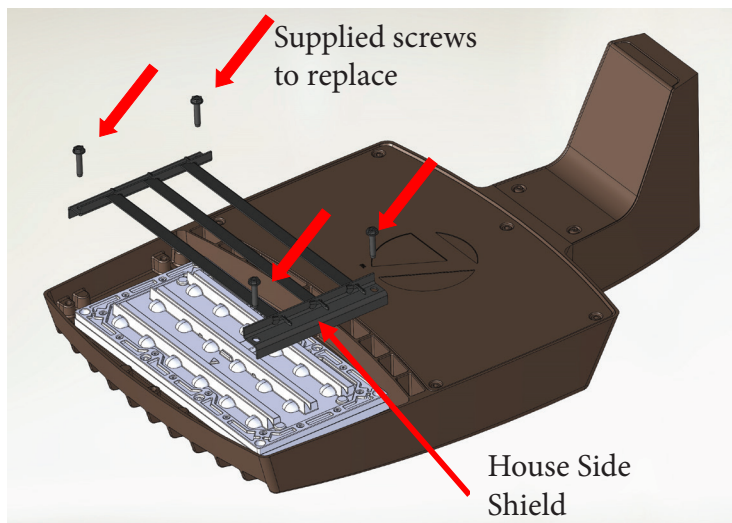
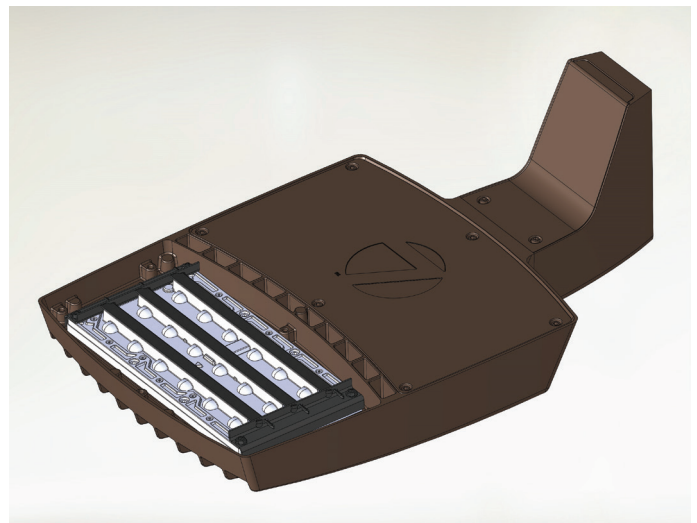


Figure 7



Installation Instructions

RSX LED Accessories

RSX Full Visor (EGFV) or RSXF Full Visor (FV) (Ships separately)

Tools required: 5/16" Socket wrench

1. Remove the glare shield and mounting screws from the box.
2. Lay the RSX face up of the ground if not already installed on the pole.
3. Line up the holes on the Full Visor with the holes on RSX.
4. Secure the Full Visor with the 10-24 x 3/8" screws provided (See Figures 7 & 8). Torque: 25-30 in-lbs.

Figure 8

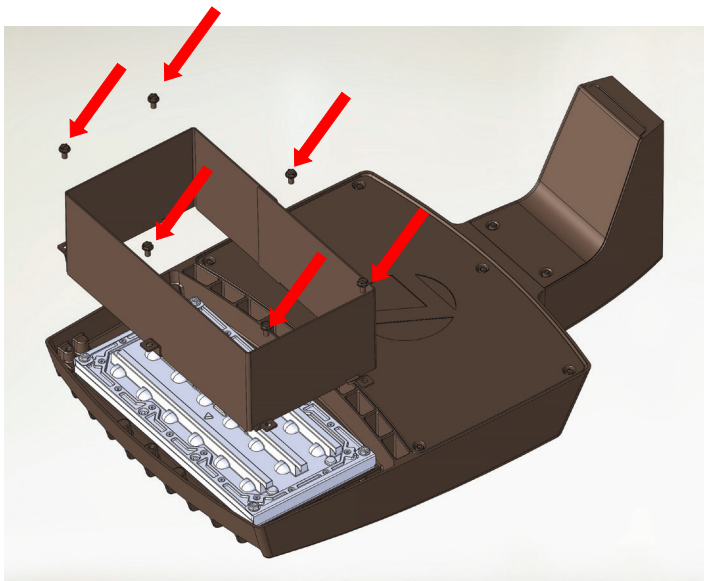


Figure 9

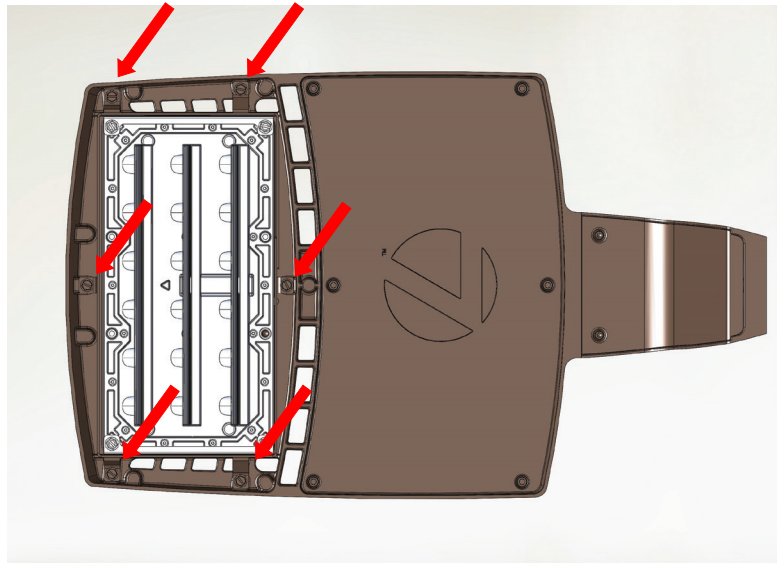
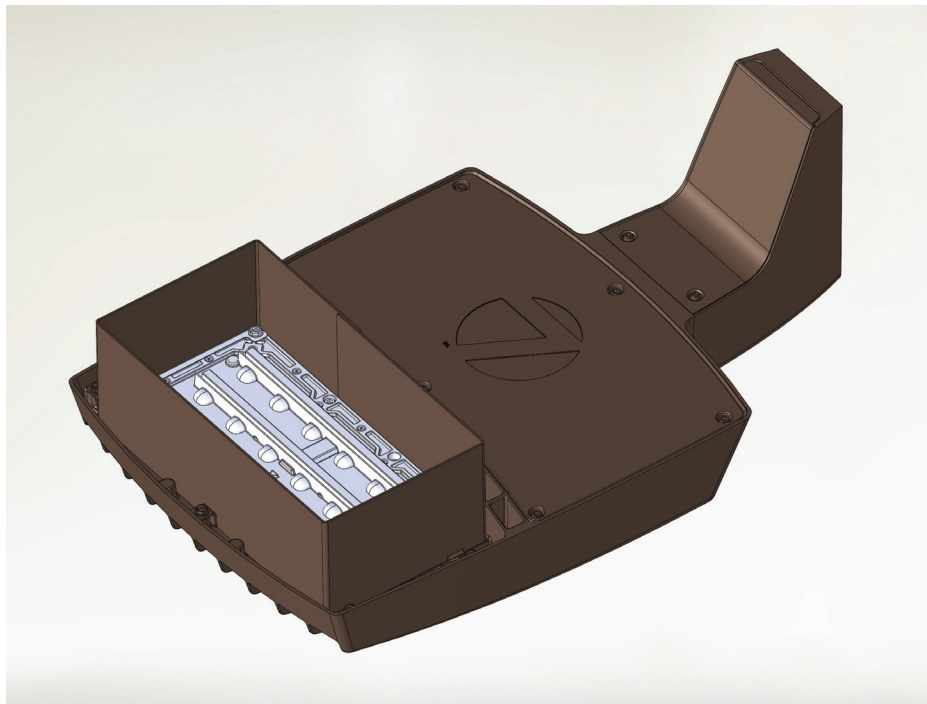


Figure 10



©2016 Acuity Brands Lighting, Inc.
All Rights Reserved.

Lithonia Lighting Outdoor
One Lithonia Way, Conyers, GA 30012
Phone: 1-800-705-SERV
www.lithonia.com

Part Number: IN-381 Rev D
Revision Date: 3/9/22

Installation Instructions

RSX LED Accessories

RSX External Glare Shield or RSXF Upper/Bottom Visor (UBV) (Ships separately)

Tools required: 5/16" Nut Driver

1. Remove the Visor and mounting screws from the box.
2. Lay the RSX face up of the ground if not already installed on the pole.
3. Line up the holes on the Glare Shield with the holes on RSX.
4. If necessary, rotate the Visor 180° for required direction and bend the appropriate tabs to line up with the holes when positioned in the opposite direction.
5. Secure the Visor with the 10-24 x 3/8" screws provided (See Figures 10 & 11). Torque: 25-30 in-lbs.

Figure 10

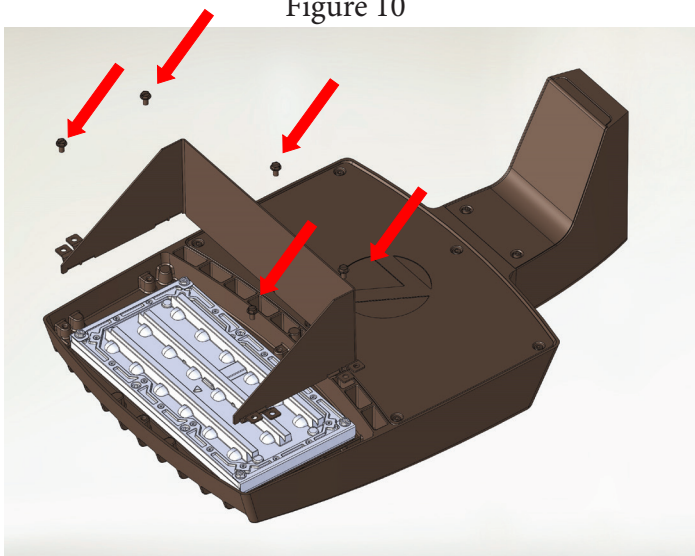


Figure 11

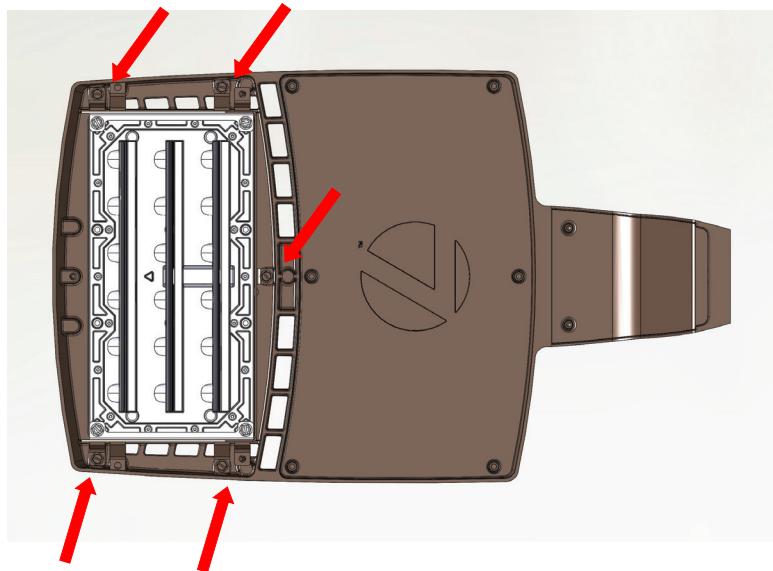
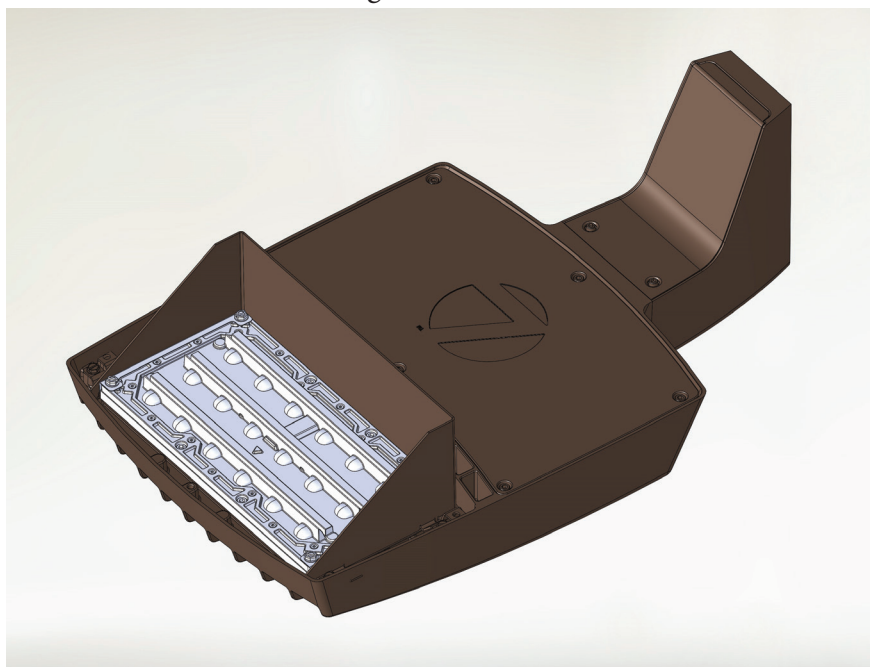


Figure 12



©2016 Acuity Brands Lighting, Inc.
All Rights Reserved.

Lithonia Lighting Outdoor
One Lithonia Way, Conyers, GA 30012
Phone: 1-800-705-SERV
www.lithonia.com

Part Number: IN-381 Rev D
Revision Date: 3/9/22