



InstantFit (UL Type-A) T5

11T5HE/34-830/IF14/G/DIM 10/1

The InstantFit TLED lamps provide hassle-free installation with simple lamp-for-lamp replacements. They deliver what we promise, with at least 40% energy savings, flicker-free performance, and the life you would expect. Other lamps claim compatibility but only InstantFit (UL Type-A) has been proven to work with over 200 ballasts and drivers, delivering even light output, with proven energy savings and a long average lifetime. End users will be delighted being under these comfortable and high quality InstantFit lamps with no visible flicker and optimized optics. Energy managers will enjoy the InstantFit lamps too as they can count the savings delivered by our lamps. To enjoy more energy savings, the InstantFit lamps can be paired with the Advance TLED drivers to create a Type C system.

Product data

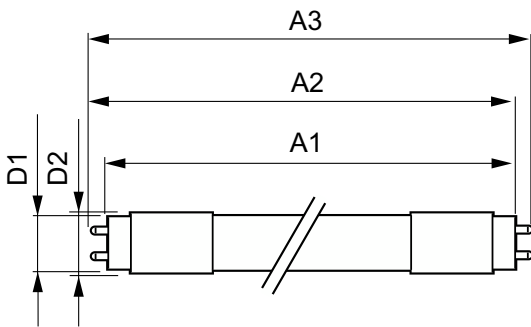
| General Information | | Color rendering index (CRI) | |
|------------------------------------|--------------------|---------------------------------------|-----------------|
| Cap-Base | G5 [G5] | | 82 |
| Nominal lifetime | 50,000 hour(s) | LLMF At End Of Nominal Lifetime (Nom) | 70 % |
| Switching Cycle | 50,000 | Operating and Electrical | |
| Lighting Technology | LED | Line Frequency | 40000-110000 Hz |
| EU RoHS compliant | Yes | Input Frequency | 40000-110000 Hz |
| Light Technical | | Power Consumption | 11 W |
| Color Code | 830 [CCT of 3000K] | Lamp Current (Max) | 400 mA |
| Beam Angle (Nom) | 200 degree(s) | Lamp Current (Min) | 60 mA |
| Luminous Flux | 1,400 lumen | Wattage Equivalent | 21 W |
| Color Designation | White (WH) | Starting Time (Nom) | 0.5 s |
| Correlated Color Temperature (Nom) | 3000 K | Warm-up time to 60% light | 0.5 s |
| Luminous Efficacy (rated) (Nom) | 127.00 lm/W | Power Factor (Fraction) | 0.9 |
| Color Consistency | <6 | Voltage (Nom) | 50-80 V |

InstantFit (UL Type-A) T5

| | |
|---------------------------------|-----------------|
| UL Type | UL Type A |
| Temperature | |
| Ambient temperature range | -20 °C to 45 °C |
| T-Case Maximum (Nom) | 70 °C |
| Controls and Dimming | |
| Dimmable | Yes |
| Mechanical and Housing | |
| Bulb Finish | Frosted |
| Bulb Material | Glass |
| Product Length | 900 mm |
| Bulb Shape | T5 |
| Approval and Application | |
| Energy Saving Product | Yes |

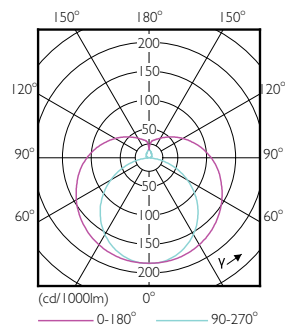
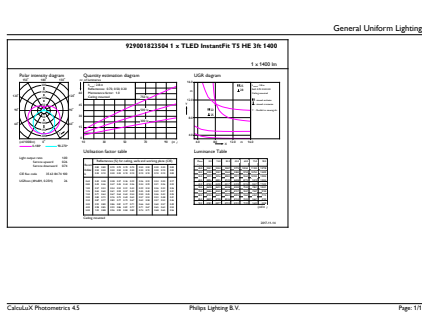
| | |
|-------------------------------------|--------------------------------|
| Approval Marks | UL certificate RoHS compliance |
| Energy Consumption kWh/1000 h | - kWh |
| Application Conditions | |
| can it be used in closed luminaires | Yes |
| Product Data | |
| Order product name | 11T5HE/34-830/IF14/G/DIM 10/1 |
| Order code | 929001823504 |
| Numerator - Quantity Per Pack | 1 |
| Numerator - Packs per outer box | 10 |
| Material Nr. (12NC) | 929001823504 |
| Full product name | 11T5HE/34-830/IF14/G/DIM 10/1 |
| EAN/UPC - Case | 50046677476453 |
| EAN/UPC - Product/Case | 046677476458 |

Dimensional drawing



| Product | D1 | D2 | A1 | A2 | A3 |
|-------------------------------|---------|---------|----------|----------|--------|
| 11T5HE/34-830/IF14/G/DIM 10/1 | 15.3 mm | 18.4 mm | 847.8 mm | 854.9 mm | 862 mm |

Photometric data

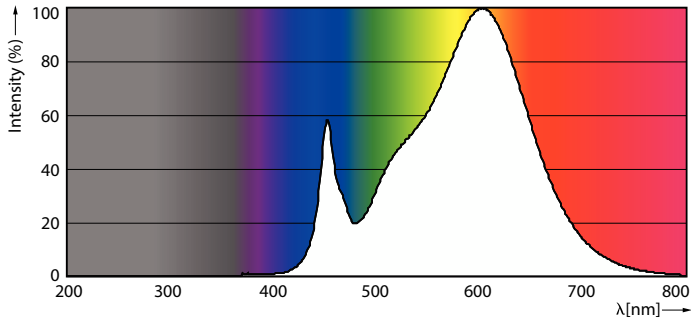


General uniform lighting - 11T5HE/34-830/IF14/G/DIM 10/1

Light Distribution Diagram - 11T5HE/34-830/IF14/G/DIM 10/1

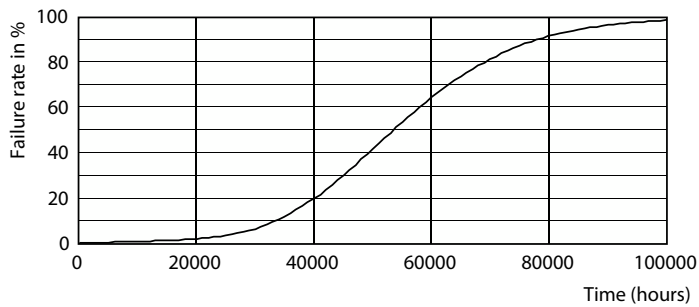
InstantFit (UL Type-A) T5

Photometric data

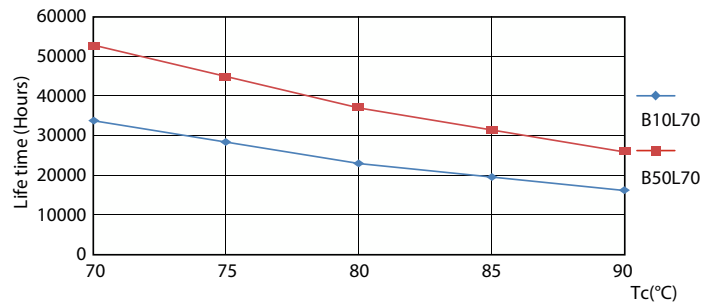


Spectral Power Distribution Colour - 11T5HE/34-830/IF14/G/DIM 10/1

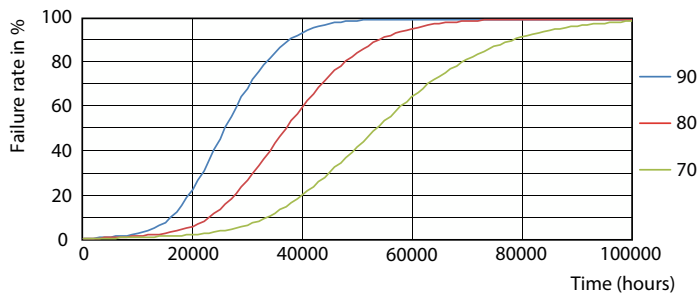
Lifetime



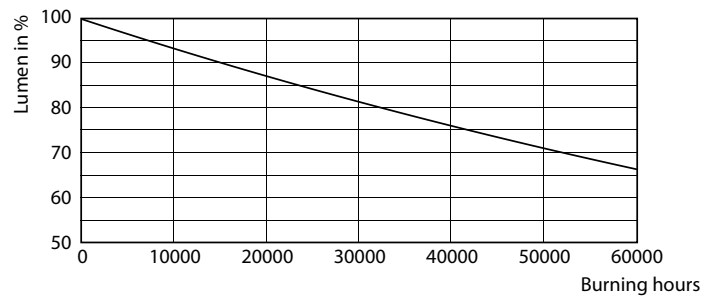
Life Expectancy Diagram - 11T5HE/34-830/IF14/G/DIM 10/1



Life Expectancy Diagram - 11T5HE/34-830/IF14/G/DIM 10/1



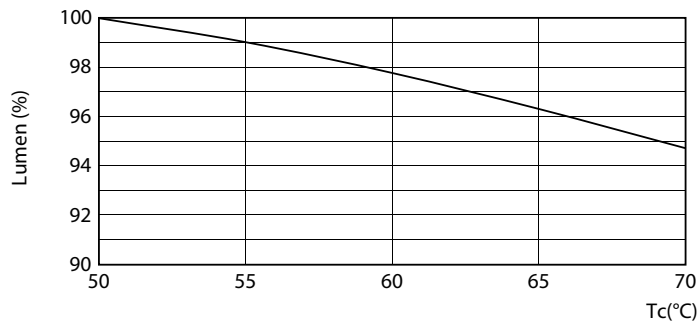
Life Expectancy Diagram - 11T5HE/34-830/IF14/G/DIM 10/1



Lumen Maintenance Diagram - 11T5HE/34-830/IF14/G/DIM 10/1

InstantFit (UL Type-A) T5

Lifetime



Lumen Maintenance Diagram - 11T5HE/34-830/IF14/G/DIM 10/1

