



PL-C/T

5.5PL-C/LED/13V/840/IF5/P/4P 20/1

Philips PLED 4-pin & 2-pin lamps are an affordable LED solution to replace compact fluorescent lamps. The product provides a natural lighting effect for use in many lighting applications, and provides instant energy savings, making them an environmentally-friendly solution. Available as replacements for 13W, 26W and 32W compact fluorescent lamps.

Product data

General Information		Lamp Current (Max)	
Cap-Base	G24Q [G24q]	Lamp Current (Max)	280 mA
Nominal lifetime	50,000 hour(s)	Lamp Current (Min)	130 mA
Switching Cycle	50,000	Wattage Equivalent	13 W
Lighting Technology	LED	Starting Time (Nom)	0.5 s
EU RoHS compliant	Yes	Warm-up time to 60% light	0.5 s
		Power Factor (Fraction)	0.9
		Voltage (Nom)	14-60 V
		UL Type	UL Type A
Light Technical		Temperature	
Color Code	840 [CCT of 4000K]	Ambient temperature range	-20 °C to 45 °C
Beam Angle (Nom)	150 degree(s)	T-Case Maximum (Nom)	70 °C
Luminous Flux	580 lumen		
Color Designation	Cool White (CW)	Controls and Dimming	
Correlated Color Temperature (Nom)	4000 K	Dimmable	Yes
Luminous Efficacy (rated) (Nom)	105.00 lm/W		
Color Consistency	<6	Mechanical and Housing	
Color rendering index (CRI)	82	Bulb Finish	Frosted
LLMF At End Of Nominal Lifetime (Nom)	70 %	Bulb Material	Plastic
		Product Length	100 mm
		Bulb Shape	PL-C
Operating and Electrical			
Line Frequency	25000-100000 Hz		
Input Frequency	25000-100000 Hz		
Power Consumption	5.5 W		

PL-C/T

Approval and Application

Energy Saving Product	Yes
Approval Marks	RoHS compliance UL certificate
Energy Consumption kWh/1000 h	- kWh

Application Conditions

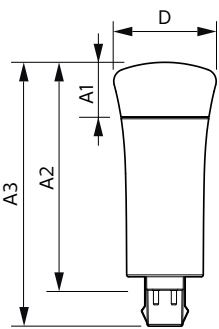
can it be used in closed luminaires	Yes
-------------------------------------	-----

Product Data

Order product name	5.5PL-C/LED/13V/840/IF5/P/4P 20/1
--------------------	-----------------------------------

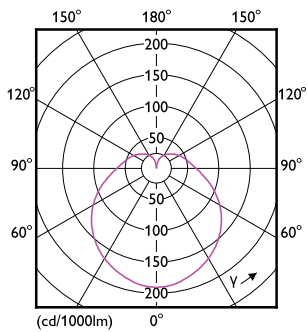
Order code	929001886004
Numerator - Quantity Per Pack	1
Numerator - Packs per outer box	20
Material Nr. (12NC)	929001886004
Full product name	5.5PL-C/LED/13V/840/IF5/P/4P 20/1
EAN/UPC - Case	50046677532463
EAN/UPC - Product/Case	046677532468

Dimensional drawing

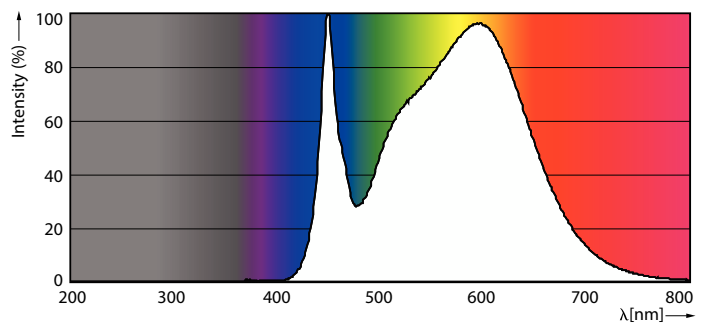


Product	D	A1	A2	A3
5.5PL-C/LED/13V/840/IF5/P/4P 20/1	45.7 mm	24.6 mm	101.6 mm	117.6 mm

Photometric data

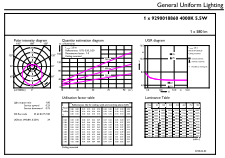


Light Distribution Diagram - 5.5PL-C/LED/13V/840/IF5/P/4P 20/1



Spectral Power Distribution Colour - 5.5PL-C/LED/13V/840/IF5/P/4P 20/1

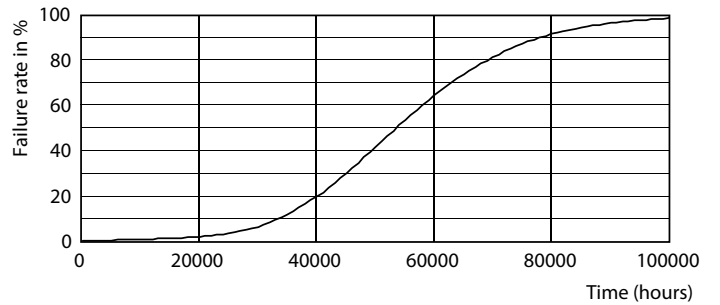
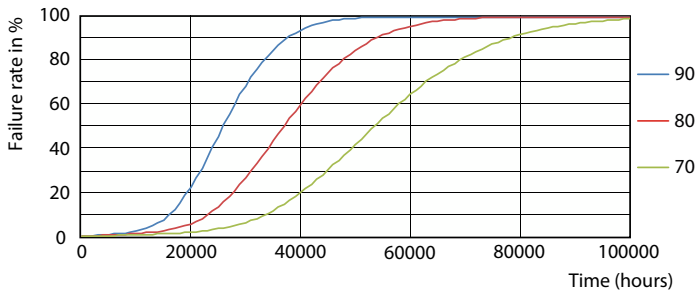
Photometric data



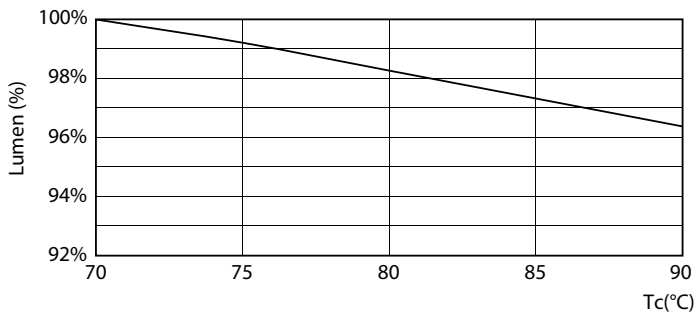
© 2023 Philips Lighting B.V. Page 11

General uniform lighting - 5.5PL-C/LED/13V/840/IF5/P/4P 20/1

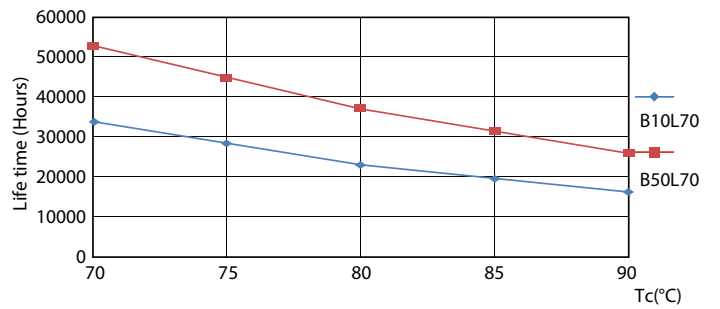
Lifetime



Life Expectancy Diagram - 5.5PL-C/LED/13V/840/IF5/P/4P 20/1



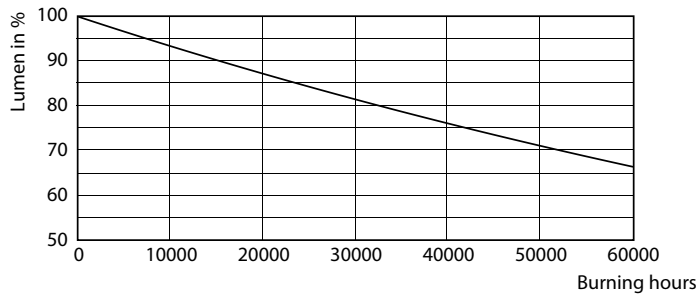
Life Expectancy Diagram - 5.5PL-C/LED/13V/840/IF5/P/4P 20/1



Lumen Maintenance Diagram - 5.5PL-C/LED/13V/840/IF5/P/4P 20/1

Life Expectancy Diagram - 5.5PL-C/LED/13V/840/IF5/P/4P 20/1

Lifetime



Lumen Maintenance Diagram - 5.5PL-C/LED/13V/840/IF5/P/4P 20/1

