



Contractor-grade MainsFit (UL Type-B) T8

14.5T8/CNG/48-840/MF18/G 25/1

The Contractor-grade MainsFit (UL Type B) lamps are designed to provide simple retrofit solution to move from traditional fluorescent lamps to energy saving LEDs. This ballast bypass lamp is similar to other UL Type B lamps in the Philips family by providing proven energy savings, long life (50k hours), surge suppression and industry leading safety features. All lamps in the Contractor-grade family are also double-ended to help simplify the installation.

Product data

General Information		LLMF At End Of Nominal Lifetime (Nom) 70 %	
Cap-Base	G13 [Medium Bi-Pin Fluorescent]		
Nominal lifetime	50,000 hour(s)		
Switching Cycle	50,000		
Lighting Technology	LED		
EU RoHS compliant	Yes		
Light Technical		Operating and Electrical	
Color Code	840 [CCT of 4000K]	Line Frequency	50 to 60 Hz
Beam Angle (Nom)	240 degree(s)	Input Frequency	50 to 60 Hz
Luminous Flux	1,800 lumen	Power Consumption	14.5 W
Color Designation	Cool White (CW)	Lamp Current (Max)	125 mA
Correlated Color Temperature (Nom)	4000 K	Lamp Current (Min)	58 mA
Luminous Efficacy (rated) (Nom)	124.00 lm/W	Wattage Equivalent	32 W
Color Consistency	<6	Starting Time (Nom)	0.5 s
Color rendering index (CRI)	80	Warm-up time to 60% light	0.5 s
		Power Factor (Fraction)	0.9
		Voltage (Nom)	120-277 V
		UL Type	UL Type B

Contractor-grade MainsFit (UL Type-B) T8

Temperature

Ambient temperature range	-20 °C to 45 °C
T-Case Maximum (Nom)	70 °C

Controls and Dimming

Dimmable	Limited
----------	---------

Mechanical and Housing

Bulb Finish	Frosted
Bulb Material	Glass
Product Length	1,200 mm
Bulb Shape	T8

Approval and Application

Energy Saving Product	Yes
Approval Marks	RoHS compliance UL certificate DLC compliance

Application Conditions

can it be used in closed luminaires	Yes
-------------------------------------	-----

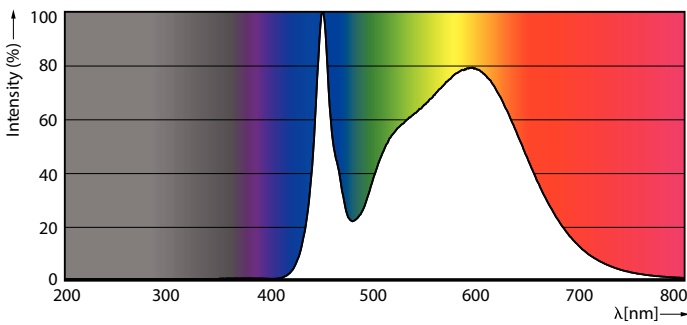
Product Data

Order product name	14.5T8/CNG/48-840/MF18/G 25/1
Order code	929003474604
Numerator - Quantity Per Pack	1
Numerator - Packs per outer box	25
Material Nr. (12NC)	929003474604
Full product name	14.5T8/CNG/48-840/MF18/G 25/1
EAN/UPC - Case	5004667757778
EAN/UPC - Product/Case	046677577773

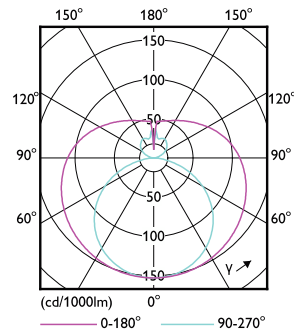
Dimensional drawing

Product	D1	D2	A1	A2	A3
14.5T8/CNG/48-840/MF18/G 25/1	25.7 mm	28 mm	1,198.2 mm	1,205.3 mm	1,212.4 mm

Photometric data



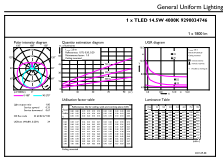
Spectral Power Distribution Colour - 14.5T8/CNG/48-840/MF18/G 25/1



Light Distribution Diagram - 14.5T8/CNG/48-840/MF18/G 25/1

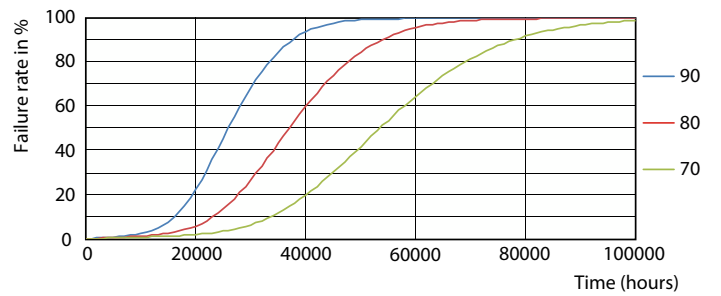
Contractor-grade MainsFit (UL Type-B) T8

Photometric data



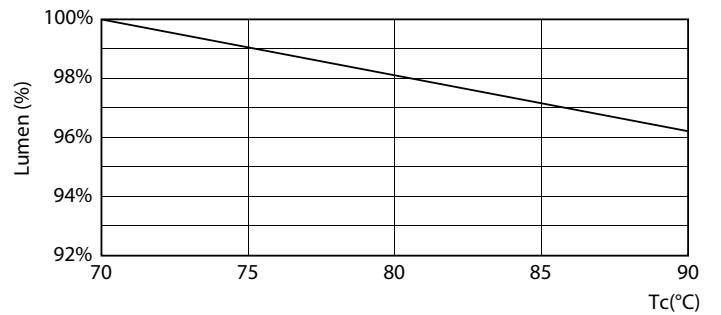
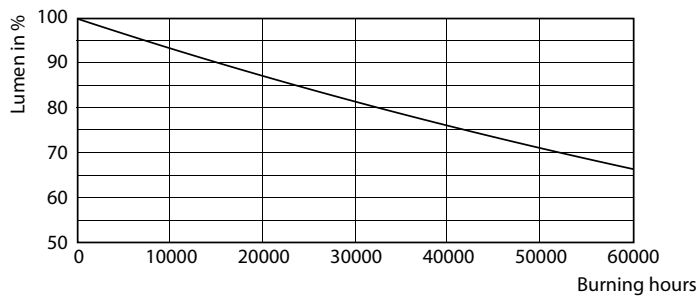
General uniform lighting - 14.5T8/CNG/48-840/MF18/G 25/1

Lifetime



Life Expectancy Diagram - 14.5T8/CNG/48-840/MF18/G 25/1

Life Expectancy Diagram - 14.5T8/CNG/48-840/MF18/G 25/1

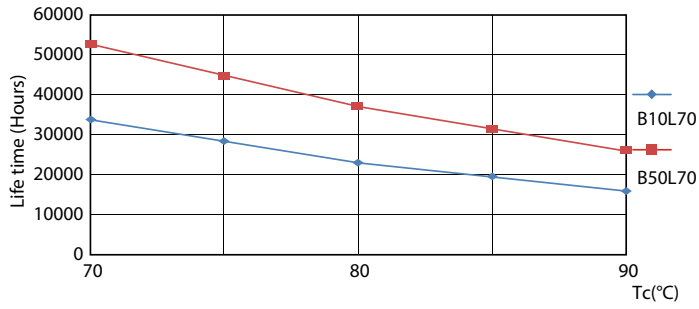


Lumen Maintenance Diagram - 14.5T8/CNG/48-840/MF18/G 25/1

Lumen Maintenance Diagram - 14.5T8/CNG/48-840/MF18/G 25/1

Contractor-grade MainsFit (UL Type-B) T8

Lifetime



Life Expectancy Diagram - 14.5T8/CNG/48-840/MF18/G 25/1

