

FEATURES & SPECIFICATIONS

INTENDED USE — Recessed housing rated Non-IC. For new construction only.

Approved for all ceiling and wiring types.

CONSTRUCTION — Air-tight standard. Tested to meet current energy codes.

Aluminum housing with galvanized steel pan.

Galvanized bar hangers span up to 24" o.c. and feature stepped shank nail and positioning guide with integral T-bar locks. Two locking screws hold fixture in position.

Galvanized steel junction box with four built in romex clamps; four 1/2" and two 3/4" knockouts with slots for pryout. Rated for through branch wiring.

Maximum 4 (2 in; 2 out) No 12 AWG conductors. Rated for 90°C.

Ground wire provided.

Removable J-box doors for easy access.

ELECTRICAL — Two-pin porcelain socket with heat shield.

Thermal protection provided against improper insulation use.

Electronic stepdown transformer is standard for 120V or 277V. The minimum starting temperature is 0°F, -18°C with short circuit protection and meets ANSI/IEEE C62.41 cat.A transient protection. 50W MR16 maximum.

INSTALLATION — 2 x 8 wood joist or T-bar installation.

Expandable bar hangers allow for off center mounting in wood joist or T-bar ceilings. Length of 25-1/4" maximum 13-1/4" minimum or cut to fit 7-1/2" on center joist construction.

Vertical adjustment of housing allows for flush mounting with ceiling face.

LISTINGS — UL Listed to US and Canadian Standards. Damp location listing.

WARRANTY — 1-year limited warranty. Complete warranty terms located at www.acuitybrands.com/CustomerResources/Terms_and_conditions.aspx

Actual performance may differ as a result of end-user environment and application.

Note: Specifications subject to change without notice.

Catalog Number
Notes
Type

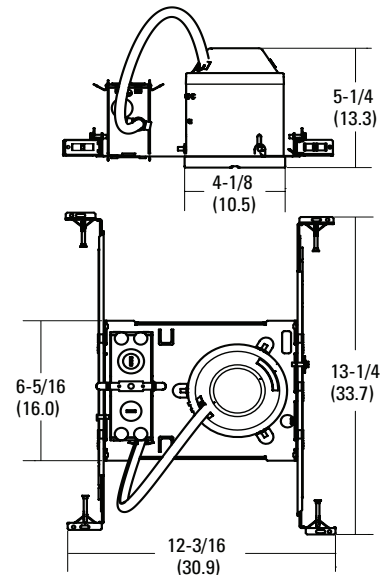
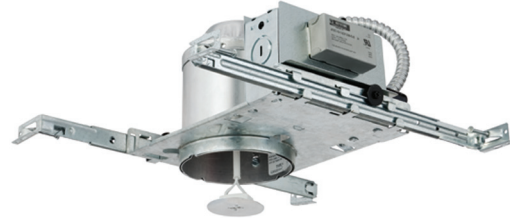
4" Housing

LV3

LOW VOLTAGE

Non-IC

New Construction



Specifications

Height: 5-1/4 (13.3)

Length: 13-1/4 (33.7)

Width: 12-3/16 (30.9)

Ceiling opening: 4-1/8 (10.5)

All dimensions are inches (centimeters) unless otherwise indicated.

ORDERING INFORMATION

Lead times will vary depending on options selected. Consult with your sales representative.

Example: LV3 120

Series	Voltage	Options
LV3	120 ¹ 277 ²	Shipped installed in fixture PHC Poke-home wire connectors

Accessories: Order as separate catalog number.	
ATK3	Airtight kit









Notes

1 Use dimmers designed for electronic transformers.

2 Dimming not available.

See trim summary on reverse side for maximum wattages.

3V Series 4" Low Voltage LV3 Reflector Trims

Description Catalog number	Maximum wattage ¹	Description Catalog number	Maximum wattage ¹
General/Task		Directional Wallwash	
Open, Adjustable 3V01AZ Clear specular 3V01GZ Gold specular 3V01BLZ Black specular		3VDW1W White	
			
<i>Non IC</i>	50 MR16	<i>Non IC</i>	50 MR16
Baffle, Adjustable		Baffle Slotted Adjustable	
3VB1 Black 3VB1W White		3VA5 White	
			
<i>Non IC</i>	50 MR16	<i>Non IC</i>	50 MR16
Accent/Wallwash		Pinhole Wide Flange	
3VE1 White		3VS1 White	
			
<i>Non IC</i>	50 MR16	<i>Non IC</i>	50 MR16
Baffle Eyeball			
3VE2 Black 3VE2W White			
			
<i>Non IC</i>	50 MR16		
Eyelid Wallwasher			
3VW1 White			
			
<i>Non IC</i>	50 MR16		

Notes

¹ Maximum wattage listed.