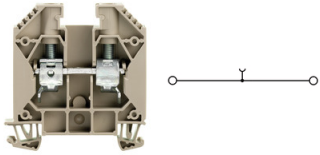
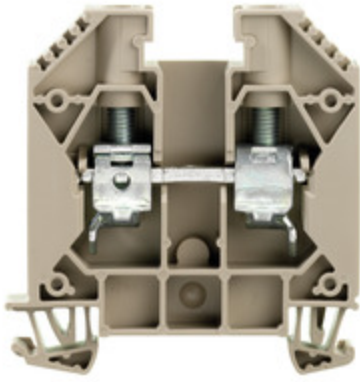


# WDU 16



## General ordering data

Version	Feed-through terminal, Screw connection, 16 mm <sup>2</sup> , 1000 V, 76 A, dark beige
Order No.	1020400000
Type	WDU 16
GTIN (EAN)	4008190127794
Qty.	50 pc(s).

## Dimensions and weights

Depth	62.5 mm
Depth (inches)	2.461 inch
Depth including DIN rail	63 mm
Height	60 mm
Height (inches)	2.362 inch
Width	11.9 mm
Width (inches)	0.469 inch
Net weight	29.46 g

## Temperatures

Storage temperature	-25 °C...55 °C
Operating temperature range	For operating temperature range see EC Design Test Certificate / IEC Ex-Certificate

## of Conformity

Continuous operating temp., min. -60 °C

Continuous operating temp., max. 130 °C

**Material data**

Material Wemid  
 Colour dark beige  
 UL 94 flammability rating V-0

**Rating data IECEx/ATEX**

Certificate No. (ATEX) DEMKO14ATEX1338U  
 Certificate No. (IECEX) IECEXULD14.0005U  
 Max. voltage (ATEX) 690 V  
 Current (ATEX) 76 A  
 Wire cross section max. (ATEX) 16 mm<sup>2</sup>  
 Max. voltage (IECEX) 690 V  
 Current (IECEX) 76 A  
 Wire cross section max. (IECEX) 16 mm<sup>2</sup>

Operating temperature range For operating temperature range see EC  
 Design Test Certificate / IEC Ex-Certificate  
 of Conformity

Marking EN 60079-7 Ex eb II C Gb

Ex 2014/34/EU label II 2 G D

**System specifications**

Version Screw connection, for screwable cross-  
 connection, One end without connector

End cover plate required Yes

Number of potentials 1

Number of levels 1

Number of clamping points per level 2

Number of potentials per tier 1

Levels cross-connected internally No

PE connection No

Rail TS 35

N-function No

PE function No

PEN function Yes

**2 clampable conductors (H05V/H07V) with equal cross-section (rated connection)**

Cross-section for connected wire, solid, two clampable wires, max. 6 mm<sup>2</sup>

Cross-section for connected wire, solid, two clampable wires, min. 1.5 mm<sup>2</sup>

Cross-section for connected wire, stranded, two clampable wires, max. 6 mm<sup>2</sup>

Cross-section for connected wire, stranded, two clampable wires, min. 1.5 mm<sup>2</sup>

Wire connection cross section, finely stranded with wire-end ferrules DIN 46228/1, 2 clampable wires, max. 6 mm<sup>2</sup>

Wire connection cross section, finely stranded with wire-end ferrules DIN 46228/1, 2 clampable wires, min. 1.5 mm<sup>2</sup>

Wire connection cross section, finely stranded, two clampable wires, min. 1.5 mm<sup>2</sup>

Wire cross-section, finely stranded, two clampable wires, max. 6 mm<sup>2</sup>

**Additional technical data**

Explosion-tested version Yes  
 Number of similar terminals 1  
 Open sides right  
 Type of mounting Snap-on

**CSA rating data**

Certificate No. (CSA) 200039-1057876  
 Current size C (CSA) 85 A  
 Voltage size C (CSA) 600 V  
 Wire cross section max. (CSA) 6 AWG  
 Wire cross section min. (CSA) 18 AWG

**Conductors for clamping (rated connection)**

Blade size 1.0 x 5.5 mm

Clampable conductor	Connection specification		Screw connection	
	Type		Type	
Cross-section for conductor connection			solid,	H05(07) V-U
	min.			1.5 mm <sup>2</sup>
	max.			16 mm <sup>2</sup>
	nominal			16 mm <sup>2</sup>

wire end ferrule	Stripping length	min.	16 mm
		max.	16 mm
		nominal	16 mm
	Tightening torque	min.	3 Nm
		max.	4 Nm
Connection specification		Screw connection	
Cross-section for conductor connection	Type	stranded, H07V-R	
	min.	1.5 mm <sup>2</sup>	
	max.	25 mm <sup>2</sup>	
	nominal	16 mm <sup>2</sup>	
wire end ferrule	Stripping length	min.	16 mm
		max.	16 mm
		nominal	16 mm
	Tightening torque	min.	3 Nm
		max.	4 Nm
Connection specification		Screw connection	
Cross-section for conductor connection	Type	flexible, H05(07) V-K	
	min.	1.5 mm <sup>2</sup>	
	max.	25 mm <sup>2</sup>	
	nominal	16 mm <sup>2</sup>	
wire end ferrule	Stripping length	min.	16 mm
		max.	16 mm
		nominal	16 mm
	Tightening torque	min.	3 Nm
		max.	4 Nm

Clamping range, max.	25 mm <sup>2</sup>
Clamping range, min.	0.82 mm <sup>2</sup>
Clamping screw	M 5
Connection cross-section, stranded, max.	25 mm <sup>2</sup>
Connection cross-section, stranded, min.	1.5 mm <sup>2</sup>
Connection direction	on side
Gauge to IEC 60947-1	B7

Number of connections	2
Stripping length	16 mm
Tightening torque, max.	4 Nm
Tightening torque, min.	3 Nm
Twin wire-end ferrules, max.	10 mm <sup>2</sup>
Twin wire-end ferrules, min.	1.5 mm <sup>2</sup>
Type of connection	Screw connection
Wire connection cross section AWG, max.	AWG 4
Wire connection cross section AWG, min.	AWG 18
Wire connection cross section, finely stranded, max.	25 mm <sup>2</sup>
Wire connection cross section, finely stranded, min.	1.5 mm <sup>2</sup>
Wire connection cross-section, finely stranded with wire-end ferrules DIN 46228/1, max.	16 mm <sup>2</sup>
Wire connection cross-section, finely stranded with wire-end ferrules DIN 46228/1, min.	1.5 mm <sup>2</sup>
Wire connection cross-section, finely stranded with wire-end ferrules DIN 46228/4, max.	16 mm <sup>2</sup>
Wire connection cross-section, finely stranded with wire-end ferrules DIN 46228/4, min.	1.5 mm <sup>2</sup>
Wire connection cross-section, solid core, max.	16 mm <sup>2</sup>
Wire connection cross-section, solid core, min.	1.5 mm <sup>2</sup>

## General

Rail	TS 35
Standards	IEC 60947-7-1
Wire connection cross section AWG, max.	AWG 4
Wire connection cross section AWG, min.	AWG 18

## Rating data

Rated cross-section	16 mm <sup>2</sup>
Rated voltage	1,000 V
Rated DC voltage	1,000 V
Rated current	76 A

Current at maximum wires	101 A
Standards	IEC 60947-7-1
Volume resistance according to IEC 60947-7-x	0.42 mΩ
Rated impulse withstand voltage	8 kV
Power loss in accordance with IEC 60947-7-x	2.43 W
Pollution severity	3

### UL rating data

Certificate No. (UR)	E60693
Conductor size Factory wiring max. (UR)	4 AWG
Conductor size Factory wiring min. (UR)	18 AWG
Conductor size Field wiring max. (UR)	4 AWG
Conductor size Field wiring min. (UR)	18 AWG
Current size C (UR)	85 A
Voltage size C (UR)	600 V

### Downloads

Approval/Certificate/Document of Conformity	<a href="#"><u>Attestation of Conformity</u></a>
	<a href="#"><u>IECEX Certificate</u></a>
	<a href="#"><u>CB Testreport</u></a>
	<a href="#"><u>CB Certificate</u></a>
	<a href="#"><u>DNVGL certificate</u></a>
	<a href="#"><u>NEMKO certificate</u></a>
	<a href="#"><u>Lloyds Register Certificate</u></a>
	<a href="#"><u>POLSKIREJ certificate</u></a>
	<a href="#"><u>UKCA Ex Certificate</u></a>
	<a href="#"><u>CE Declaration of Conformity</u></a>
	<a href="#"><u>ATEX Certificate</u></a>
Engineering Data	<a href="#"><u>UKCA declaration of conformity</u></a>
	<a href="#"><u>Confirmation of Standards EN 45545-2_2020-10</u></a>
	<a href="#"><u>CAD data -- STEP</u></a>
	<a href="#"><u>Zuken E3.S</u></a>
	<a href="#"><u>Eplan data</u></a>
	<a href="#"><u>CAX data</u></a>
	<a href="#"><u>WSCAD data</u></a>
User Documentation	<a href="#"><u>NTI WDU/WPE 16.pdf</u></a> <a href="#"><u>StorageConditionsTerminalBlocks</u></a>
Catalogues	<a href="#"><u>Catalogues in PDF-format</u></a>
Brochures	
Classifications	
ETIM 6.0	EC000897

ETIM 7.0	EC000897
ETIM 8.0	EC000897
ETIM 9.0	EC000897
ECLASS 9.0	27-14-11-20
ECLASS 9.1	27-14-11-20
ECLASS 10.0	27-14-11-20
ECLASS 11.0	27-14-11-20
ECLASS 12.0	27-14-11-20
ECLASS 13.0	27250101

Approvals



Approvals



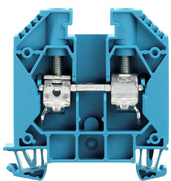
ROHS Conform

UL File Number Search [UL Website](#)

Certificate No. (UR) E60693

Certificate No. (cURusEX) E184763

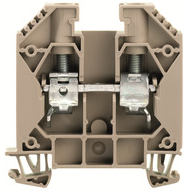
Related products:



Order No.: 1020480000  
 Type: WDU 16 BL

Version:  
 Feed-through terminal, Screw connection, 16 mm<sup>2</sup>, 1000 V, 76 A, blue

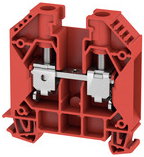
[PDF data sheet](#)  
[Add to Inquiry List](#)



Order No.: 1393390000  
Type: WDU 16 IR

Version:  
Feed-through  
terminal, Screw  
connection, 16 mm<sup>2</sup>,  
1000 V, 76 A, dark  
beige

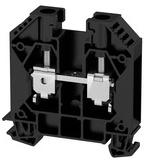
[PDF data sheet](#)  
[Add to Inquiry List](#)



Order No.: 1833400000  
Type: WDU 16 RT

Version:  
Feed-through  
terminal, Screw  
connection, 16 mm<sup>2</sup>,  
1000 V, 76 A, red

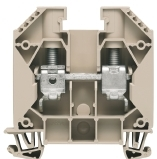
[PDF data sheet](#)  
[Add to Inquiry List](#)



Order No.: 1833420000  
Type: WDU 16 SW

Version:  
Feed-through  
terminal, Screw  
connection, 16 mm<sup>2</sup>,  
1000 V, 76 A, black

[PDF data sheet](#)  
[Add to Inquiry List](#)



Order No.: 1028900000  
Type: WDU 16 ZA

Version:  
Feed-through  
terminal, Screw  
connection, 16 mm<sup>2</sup>,  
1000 V, 76 A, dark  
beige

[PDF data sheet](#)  
[Add to Inquiry List](#)

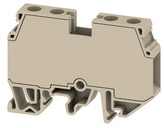


Order No.: 1028980000  
Type: WDU 16 ZA BL

Version:  
Feed-through  
terminal, Screw  
connection, 16 mm<sup>2</sup>,  
1000 V, 76 A, blue

[PDF data sheet](#)  
[Add to Inquiry List](#)





Order No.: 2868370000

Type: WDUB 16

Version:

Feed-through  
terminal, Screw  
connection, 16 mm<sup>2</sup>,  
1000 V, 76 A, dark  
beige

[PDF data sheet](#)

[Add to Inquiry List](#)