

SHARP POG

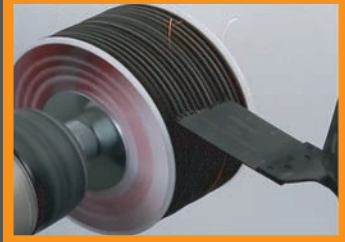
OSCILLATING BLADE SHARPENER

FEATURES:

- Made up of 15 - 3" diameter metal cutting disks
- Overall width: 1 1/2"
- Will NOT sharpen carbide tipped blades
- To be used with hand drill only
- Always wear safety glasses

Part# H91538

**QUICKLY & EFFECTIVELY SHARPENS OSCILLATING
SAW BLADES WITH THE USE OF A HAND DRILL.**



ELECTRICIAN'S KIT

4 OF THE MOST POPULAR STYLE MULTI-TOOL CUTTING BLADES



- Includes 2x Bi-Metal Blades and 2x Wood/Plastic Blades
- Cuts very quickly and neatly through wood & drywall
- Notch out joists and studs for cables & pipes
- Cuts out cabinetry for device boxes
- Remove baseboards for heaters and devices
- Creates minimal dust and disturbance
- Cuts easily in awkward access situations



- Blade 1: 32mm Bi-Metal Wood and Nails
- Blade 2: 32mm Coarse Tooth Wood
- Blade 3: 44mm Bi-Metal Wood and Nails
- Blade 4: 64mm Coarse Tooth Wood



- Part# H4EMK
Electrician's Kit (Four Blades)
- Part# H5EMK
Electrician's Kit (Five Blades)
- Part# H32CJ1
Japanese Tooth Blade 32mm
- Part# H44BM1
Bi-Metal Blade - 44mm
- Part# H63CJ1
Japanese Tooth Blade - 63mm
- Part# H44TN1
Titanium Alloy Bi-Metal Blade - 44mm



Multi-Tool 4 Piece Blade Kit Part# H8475

Contains:

- 2 x 1-3/4" Bi-Metal blades 45mm (1 x Titanium Plated, Wood/Plastic/Metal)
- 1 x 1-1/4" Bi-Metal blade 32.5mm (Wood)
- 1 x 2-5/8" Bi-Metal blade 68mm (Wood/Plastic/Metal)

4 Piece Multi-Tool Blade Set

Bi-metal oscillating Multi-Tool Blade Set for a wide variety of cutting applications. Cut quickly and neatly through wood, drywall, plastic, nails and other similar materials. The 4 Piece Blade Set can be used with most standard oscillating multi-tools. Great for multiple applications including: cutting out baseboards, drywall device holes, cabinetry, etc.



Part# H44TN1

44MM ULTIMATE TITANIUM ALLOY BI-METAL SMART BLADE

The Titanium coated bi-metal blades are a great long-life blade solution. Made for cutting through wood AND nails and screws! The titanium coating helps reduce the heat build up on the blade, preserving the tooth design and maintaining a sharper blade for longer lasting cuts in wood!

WIRE BENDING MADE EASY



The Bulldog Bender is designed and manufactured by an electrician for electricians. Used for bending wire in panels, disconnects, LBs & wireways. The Bulldog Bender will prove to be a valuable tool to add to your arsenal. As with any specialty tool, with practice you will learn how to use the Bender to its full bending potential.

Part# 78400



Part# 78600



BENDS UP TO 500 MCM

- 78500 - Bulldog Original
- 78501 - Bulldog Pro with Adaptor
- 78502 - Bulldog 3 Piece Set (original & Pro)

BENDS UP TO 750 MCM

- 78600 - Bulldog Big Daddy 3 Piece Set

BENDS UP TO 4/0

- 78400 - Bulldog Pup
- 78402 - Bulldog 'Pup Pro' 2 piece set
- 78403 - Bulldog Pup 3 piece set



Larger model available for up to 1000 MCM.
Contact us for more details.

Part# 78500



Part# 78501

Part# 78502 (set)

Part# 78501



All Bulldogs shipped with knurled dowels except the "Pup" series. Smooth dowels available. Please see website for all configurations.

Bend-All

BENDS UP TO 500 MCM



- Bend up to 500 MCM.
- Connects to your standard 1/2" ratchet
- Bend inside enclosures to the right, left, front or back
- Bend in tight spaces where your hands wouldn't fit
- Made with machined aircraft aluminum
- Made in Canada

Part #77455

Save your knuckles by using our Bend-All cable bender! Made with machined aircraft aluminum, this cable bender is extremely strong and durable. It connects to your standard 1/2" ratchet, making cable bending a breeze for you.

TOP SELLING PRODUCT



The JIMBO WIRE PULL BRACKET

The Jimbo – Wire Pull Bracket helps to eliminate cable snags and damage over sharp edges and ceiling grids. Maximize your efficiency working by yourself with a helping hand from the Jimbo.



Features:

- Set up multiple brackets making a temporary cable raceway to avoid snags or catching
- Pull hard around corners and through structural steel
- Consolidate cables to the best angle for ease of pulling



Part#40200

NUT SNUGGER

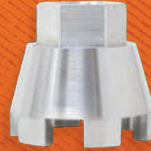
Stop bashing locknuts with your flat blade screwdriver and get yourself a Nut Snugger! Unlike other methods, the Nut Snugger allows you to install a connector on your own when it is out of reach. Using magnets, the Nut Snugger holds locknuts in place and allows you to easily install conduit on the other side. As a ratchet attachment, the Nut Snugger seamlessly tightens locknuts in seconds. The Nut Snugger is American made and features precisely cut teeth and a rigid metal construction. This outstanding attachment is light, strong, and comes in 1/2" and 3/4" variations. Both are available together in a kit.

Features:

- Patent Pending
- Made in USA
- Can be used with adjustable wrench, tongue and groove pliers, 3/4" box wrench, and 3/8" drive ratchet.



Part#
80050 - 1/2
80075 - 3/4
80090 - Kit (1/2" and 3/4")



THE LOCKNUT WRENCH



How many locknuts have you bashed with your flat blade screw driver? The Locknut Wrench allows you to tighten locknuts quickly and works great in tight spaces. The patent pending design is available in 3 sizes.

- Offset ends allow access in tight locations. Handle cut away sections are engineered to exact lock nut engagement and rotation
- Singular handle prevents wrist tension
- Clear permanent laser etched markings to ease use
- Comprised of durable steel and strong enough for any job

See website for part numbers and kit details