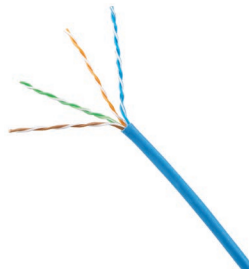


TX6™ Category 6 U/UTP Copper Cable – North America

specifications

Category 6 cable shall meet ANSI/TIA-568-2.D Category 6 component standard. The conductors shall be 23 AWG construction with FEP/polyolefin insulation. The copper conductors shall be twisted in pairs and covered by a low smoke, flame-retardant (CMP) PVC jacket.



technical information

Electrical performance:	Certified channel performance in a 4-connector configuration up to 100 meters and meets ANSI/TIA-568-2.D Category 6 standard at swept frequencies up to 250MHz Certified component performance up to 100 meters and meets the component requirements of ANSI/TIA-568-2.D Category 6 component standard at swept frequencies up to 250 MHz
Standards compliance:	UL Listed CMP-LP (0.5A) for Plenum
Conductors/insulators:	Plenum – 23 AWG solid copper covered by FEP/polyolefin insulation
Insulation diameter:	0.033 – 0.043 in. (0.83 – 1.09mm)
Flame rating:	Plenum – NFPA 262
PoE compliance:	Meets IEEE 802.3af, IEEE 802.3at and IEEE 802.3bt for PoE applications
Installation tension:	25 lbf (110N) maximum
Temperature rating:	32°F to 122°F (0°C to 50°C) during installation -4°F to 194°F (-20°C to 90°C) during operation (Plenum)
Cable jacket:	Plenum – low smoke, flame-retardant PVC
Cable diameter:	Plenum – 0.205 in. (5.2mm) nominal
Cable weight:	Plenum – 25 lbs./1000 ft. (12 kg/305m)
Packaging:	1000 ft. (305m) in an easy payout carton Package tested to ISTA Procedure1A

key features and benefits

Third party tested	Cable has been tested as part of the Category 6 UTP Copper Cabling System by an independent laboratory and complies with the electrical channel requirements of the following standard: ANSI/TIA-568-2.D Category 6
Descending length cable markings	Easy identification of remaining cable reduces installation cable markings time and cable scrap
Tested beyond the standards	Cable has been characterized to 350 MHz, 100 MHz above the standard
Extended temperature range	Allows operation in 90°C (194°F) ambient environment providing error-free performance in high-density cabinets and large cable bundles running PoE+ or PoE++ applications
Easy payout carton	Ensures proper performance and provides quick installation

applications

Interoperable and backward compatible, the Panduit TX6™ Cabling System provides design flexibility to protect network investments well into the future. With certified performance to the ANSI/TIA-568-2.D Category 6 and ISO 11801 Class E standards, this system will support the following applications:

- Ethernet 10BASE-T, 100BASE-T (Fast Ethernet), 1000BASE-T (Gigabit Ethernet), 10GBASE-T (10 Gigabit Ethernet over limited distances as specified in the industry 10GBASE-T standards)
- 155 Mb/s ATM, 622 Mb/s ATM, 1.2 Gb/s ATM
- Token Ring 4/16

Category 6 U/UTP Copper Cable

Plenum: PUP6C04**-ULP

Cable Prep Tools

Wire snipping tool: CWST

Wire stripping tool: CFAST

**For standard cable colors, add suffix BU(Blue), WH (White), RD (Red), OR (Orange), YL (Yellow), GR (Green), VL (Violet), IG(International Gray), or BL (Black).

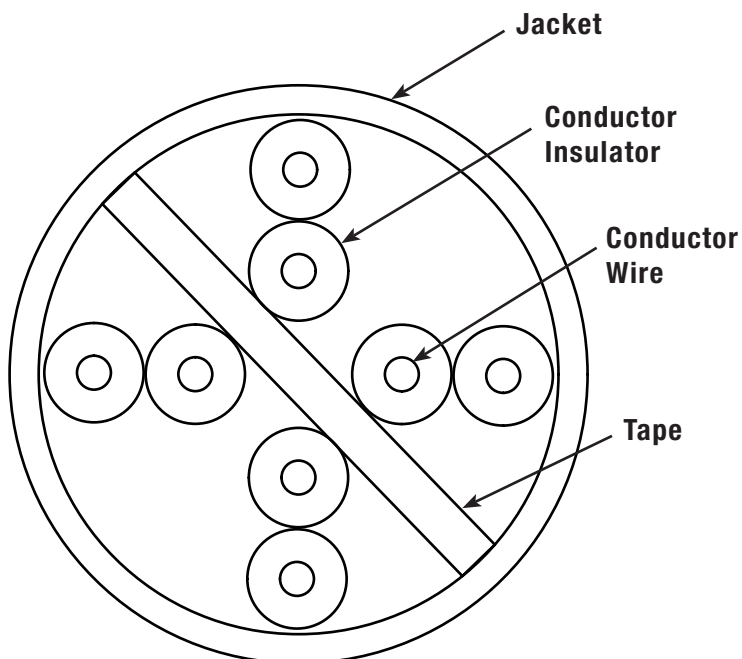
Visit www.panduit.com for connectivity components.

TX6™ Category 6 U/UTP Copper Cable – North America

additional specifications

Mechanical Test	
Ultimate Breaking Strength	>90 lbf (400N)
Minimum Bend Radius	4 x cable diameter
Electrical Test	
Nominal Velocity of Propagation (NVP)	CMP – 72%
Operating Voltage, Maximum	80V

cable construction



WORLDWIDE SUBSIDIARIES AND SALES OFFICES

PANDUIT US/CANADA
Phone: 800.777.3300

PANDUIT EUROPE LTD.
London, UK
cs-emea@panduit.com
Phone: 44.20.8601.7200

PANDUIT SINGAPORE PTE. LTD.
Republic of Singapore
cs-ap@panduit.com
Phone: 65.6305.7575

PANDUIT JAPAN
Tokyo, Japan
cs-japan@panduit.com
Phone: 81.3.6863.6000

PANDUIT LATIN AMERICA
Guadalajara, Mexico
cs-la@panduit.com
Phone: 52.33.3777.6000

PANDUIT AUSTRALIA PTY. LTD.
Victoria, Australia
cs-aus@panduit.com
Phone: 61.3.9794.9020

For a copy of Panduit product warranties, log on to www.panduit.com/warranty

For more information

Visit us at www.panduit.com

Contact Customer Service by email: cs@panduit.com
or by phone: 800.777.3300

PANDUIT®

© 2019 Panduit Corp.
ALL RIGHTS RESERVED.
COSP421--WW-ENG
4/2019