



Smart Builders Build Homes with Smarter Devices

Juno AI™, a seamless, simple solution to a smarter home

Building a successful smart home involves more than installing a collection of smart devices. It requires an ecosystem that makes peoples' lives easier, safer and more enjoyable while reducing installation costs and helping builders sell homes.

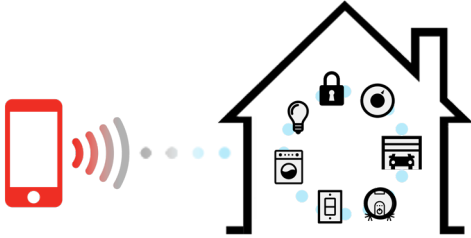
Juno AI is an advanced LED downlight that features a JBL® speaker and Amazon Alexa voice service in a single patent pending ceiling light fixture. It's a 6" downlight, but much, much more. Juno AI takes advantage of the most ideal location in the home – the ceiling – to create a smart ecosystem. It can control up to 200 other smart devices, play music through its premium speakers, and set the mood through controllable lighting. Ask Alexa anything with Juno AI.



JUNO®

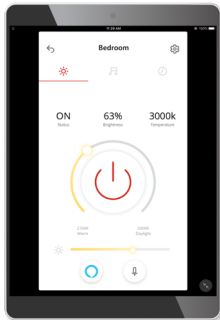
Differentiate Your Homes, Increase Your Margins

Juno AI allows you to easily place Alexa into every room of the home, optimally positioned above the fray and virtually invisible, without the need for a hub. It clears the clutter and eliminates the need for table top units, pucks and other wall mounted smart devices. With Juno AI, builders can install one smart product that can control up to 200 devices.



Total Lighting Control

Set a scene; program lighting to wake up, chill or sleep or set your mood; dim your lights, or tune your lighting color temperature control from warm to cool daylight.



Premium Sound by JBL®

Play music through a concealed speaker including simple wireless streaming.



Voice Control Your Home

Enables hands-free control of other smart home devices from the best vantage point in every room.



Alexa, what is today's weather?

Alexa, dim lights

Alexa, turn up the music

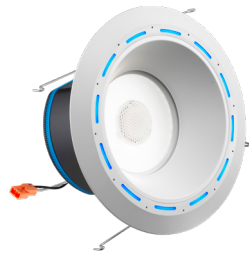
Alexa, warm to 72 degrees

Control Your Privacy

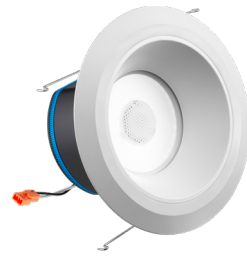
Mute for privacy or turn off completely with the flick of a switch.



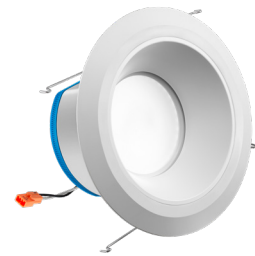
Selection of Juno AI™ Downlights












LED Voice Control Speaker Light with Alexa built-in



LED Speaker Light



LED Downlight

SKU	J6AI-ALXA	J6AI-SPKR	J6AI-DL
Lumens	1000lm	1000lm	1000lm
Lighting Color Temperature	Tunable from 2700K-5000K (warm to cool daylight)	Tunable from 2700K-5000K (warm to cool daylight)	Tunable from 2700K-5000K (warm to cool daylight)
Dimming	Down to 1%	Down to 1%	Down to 1%
Speaker	Premium JBL® Speaker	Premium JBL® Speaker	
Voice	Built-in Alexa Voice Service <i>No additional hardware required</i>		
Wi-Fi	Required 2.4/5GHz 802.11a/b/g/n/ac router	Required 2.4/5GHz 802.11a/b/g/n/ac router	Required 2.4GHz 802.11b/g/n router
Bluetooth	Capable (BT sink)	Capable (BT sink)	
Compatibility	 Download the free app  	 Download the free app  	 Download the free app  
Additional Features	<ul style="list-style-type: none"> • Pair up to 200 smart devices • Total lighting control including dimming, tunable color temperature and programming to set a scene or mood • Stream your favorite music and enjoy rich sound with a premium JBL® speaker • No hub required • Use Alexa to voice control your lights, thermostat, door locks and more, just ask 	<ul style="list-style-type: none"> • Pair up to 200 Juno AI lights • Total lighting control including dimming, tunable color temperature and programming to set a scene or mood • Stream your favorite music and enjoy rich sound with a premium JBL® speaker • No hub required 	<ul style="list-style-type: none"> • Pair up to 200 Juno AI lights • Total lighting control including dimming, tunable color temperature and programming to set a scene or mood • No hub required
Warranty	5-year limited	5-year limited	5-year limited

Juno AI™ for Every Area of the Home

Juno AI's simple installation design eliminates the need for any special contractors. Juno AI fits into a standard 6" downlight can. Your trusted electrical contractor can install it with no special skills required, and the homeowner can easily program it with their mobile device upon move in.

