



# LBL-COB-384-24V-8MM

COB LED Strip 24V 3W/ft 16ft IP20

Project: \_\_\_\_\_

Location: \_\_\_\_\_

Cat # : \_\_\_\_\_ Qty: \_\_\_\_\_

Notes: \_\_\_\_\_

**DESCRIPTION**

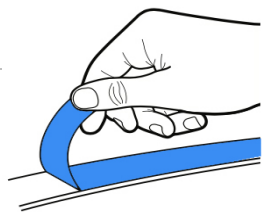
COB LED flexible strip 24V for dry locations  
 Seamless linear light - no difused cover needed  
 No hotspots and with CRI 90+ for vibrant colors  
 Easy to install and low maintenance  
 Higher efficiency and more flexible than SMD LED strips

**APPLICATIONS**

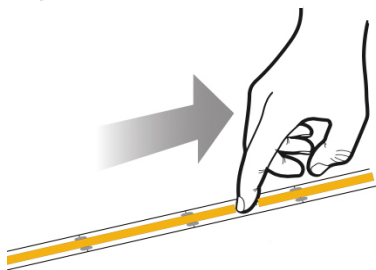
Cove lighting, path and contour marking  
 DIY lights for home undercabinet and valance use  
 Decorative lights for holiday, event, show, exhibition

**INSTALLATION INSTRUCTIONS**

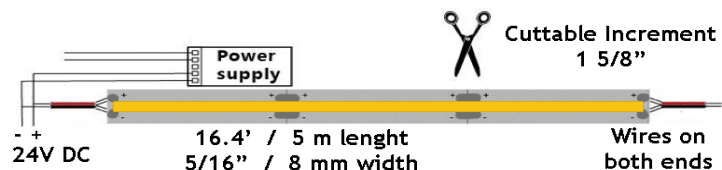
1. Remove backing paper to reveal adhesive tape



2. Press LED tape firmly onto clean smooth surface that adsorbs heat, such as metal or glass. Start at one end and gradually move along surface, making sure tape is smooth and not creased



3. Cut on trim marks



**WARNING**

LED tape gets hot. Mounting firmly and securely on smooth and thermo conductive surface such as metal or glass is critical for proper thermal management and long life.  
 Not following these instructions voids the warranty

**ORDERING GUIDE**

2700K	LBL-COB-384-24V-8MM-27K
3000K	LBL-COB-384-24V-8MM-30K
4000K	LBL-COB-384-24V-8MM-40K
5000K	LBL-COB-384-24V-8MM-50K

SPECIFICATION (tolerance +/- 10%)	
Applications	Undercabinet, Cove, Valance, Decorative
Color Temperature (K)	2700   3000   4000   5000
Power	3 W/ft
Efficiency	100 lm/W
Light output	300 lm/ft
Length per roll	16.4 ft / 5 meters
Maximum Length	16.4 ft / 5 meters
Width	5/16" / 8 mm
Power per Max Length	50 W
Lumen per Max Length	5,000 lm
Beam Angle	180°
CRI	90 +
Input	24V DC
Dimmable	Yes
LED Operation Type	Constant Voltage
IP Grade	IP 20
Approved Location	Indoor / Dry Location
Ambient Temperature	-4° F (-20° C) to +104° F (+40° C)
Cuttable Increment	1 5/8"
Adhesive Tape Type	3M 300SE
Projected Life	70% Light Output at 20,000 Hours
Certification	cETLus
Warranty	3 Year

**ACCESSORIES** Sold Separately

-  cULus Class 2 Drivers 60W, 96W, 192W, 288W  
120V-277V in, 24V DC out. **5-in-1 Dimmable**  
Built-In Wiring Compartments. Wet location
-  cULus Class 2 Driver cat # **LBL-DC24V96W**  
120V in, 24V DC out, 96W. Triac / 0-10V Dimmable
-  Aluminum Channel With Diffused Cover  
3.3' cat # **XC610**
-  Strip Connector 8mm no wires cat # **LSC-0-8MM**
-  Single Connector with 6" wire cat # **LSC-1-8MM**
-  Two Connectors with 6" wire cat # **LSC-2-8MM**

Note: Connectors do not fit inside the channel