



PL-S

5PL-S/LED/13H/840/IF5/P/2P 20/1

Philips LED PL-S lamps make the transition to LED from CFL lamps as simple as replacing a lamp. The InstantFit (UL Type A) 2-pin PL-S LED lamps are available in a wide array of color temperatures. They quickly and effectively replace 13W 2-pin compact fluorescent PL-S lamps.

Product data

General Information	
Cap-Base	GX23
Nominal lifetime	50,000 hour(s)
Switching Cycle	50,000
Lighting Technology	LED
EU RoHS compliant	Yes
Light Technical	
Color Code	840 [CCT of 4000K]
Beam Angle (Nom)	120 degree(s)
Luminous Flux	580 lm
Color Designation	Cool White (CW)
Correlated Color Temperature (Nom)	4000 K
Luminous Efficacy (rated) (Nom)	116.00 lm/W
Color Consistency	<6
Color rendering index (CRI)	82
LLMF At End Of Nominal Lifetime (Nom)	70 %
Operating and Electrical	
Line Frequency	50 to 60 Hz
Input Frequency	50 to 60 Hz
Power Consumption	5 W
Lamp Current (Max)	50 mA

Lamp Current (Min)	15 mA
Wattage Equivalent	13 W
Starting Time (Nom)	0.5 s
Warm-up time to 60% light	0.5 s
Power Factor (Fraction)	0.9
Voltage (Nom)	120-277 V
UL Type	UL Type A
Temperature	
Ambient temperature range	-20 °C to 45 °C
T-Case Maximum (Nom)	75 °C
Controls and Dimming	
Dimmable	No
Mechanical and Housing	
Bulb Finish	Frosted
Bulb Material	Plastic
Product Length	170 mm
Bulb Shape	PL-S
Approval and Application	
Energy Saving Product	Yes

PL-S

Approval Marks	UL certificate RoHS compliance
Energy Consumption kWh/1000 h	- kWh

Application Conditions

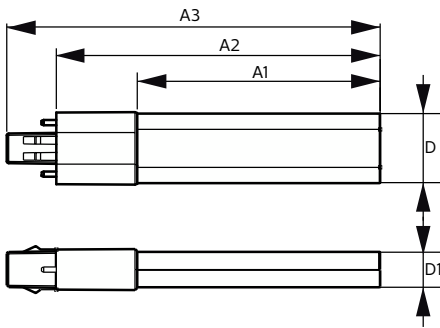
can it be used in closed luminaires	Yes
-------------------------------------	-----

Product Data

Order product name	5PL-S/LED/13H/840/IF5/P/2P 20/1
Full product name	5PL-S/LED/13H/840/IF5/P/2P 20/1

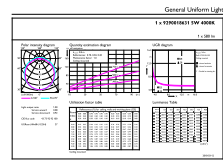
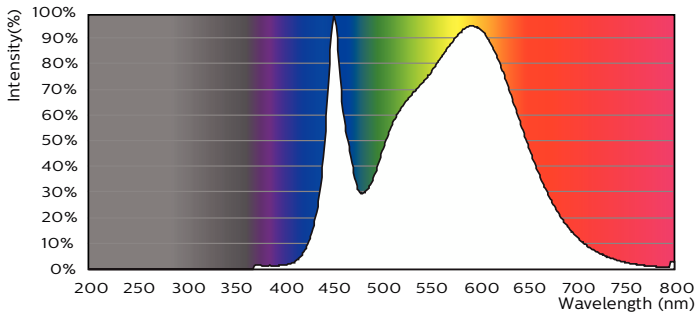
Order code	529586
Material Nr. (12NC)	929001863104
Numerator - Quantity Per Pack	1
EAN/UPC - Product/Case	046677529581
Numerator - Packs per outer box	20
EAN/UPC - Case	50046677529586

Dimensional drawing



Product	D	D1	A1	A2	A3
5PL-S/LED/13H/840/IF5/P/2P 20/1	31.1 mm	15.8 mm	108 mm	144 mm	166 mm

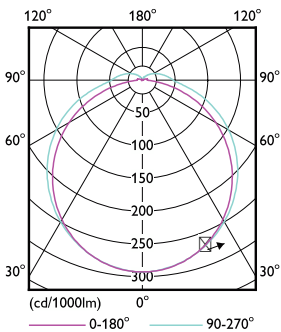
Photometric data



© 2023 Philips Lighting B.V. Page 10

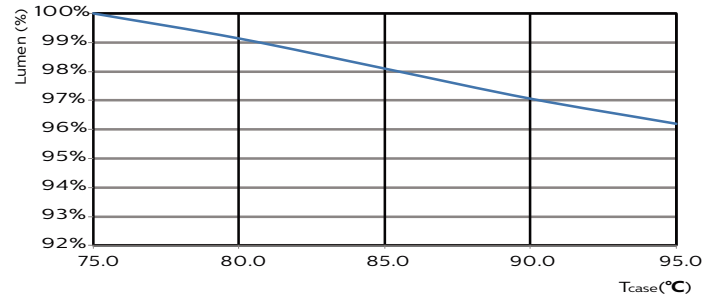
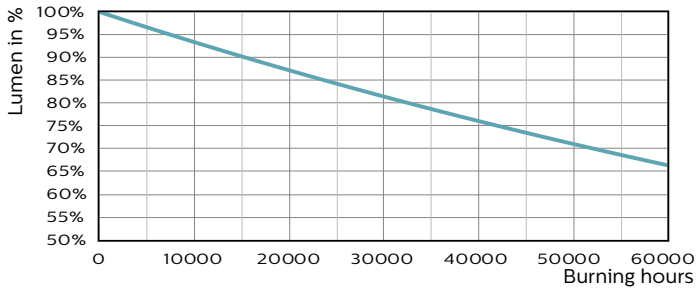
Spectral Power Distribution Colour - 5PL-S/LED/13H/840/IF5/P/2P 20/1

General uniform lighting - 5PL-S/LED/13H/840/IF5/P/2P 20/1



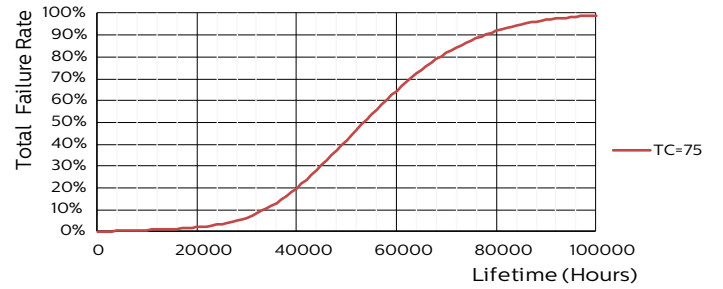
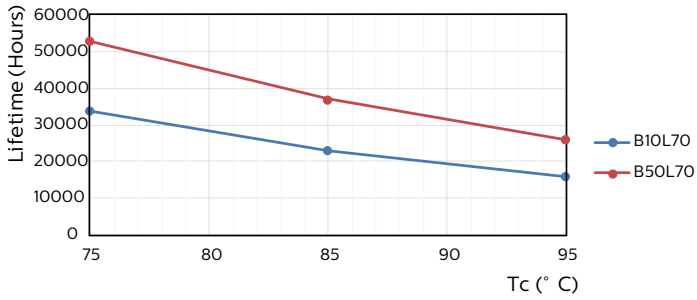
Light Distribution Diagram - 5PL-S/LED/13H/840/IF5/P/2P 20/1

Lifetime



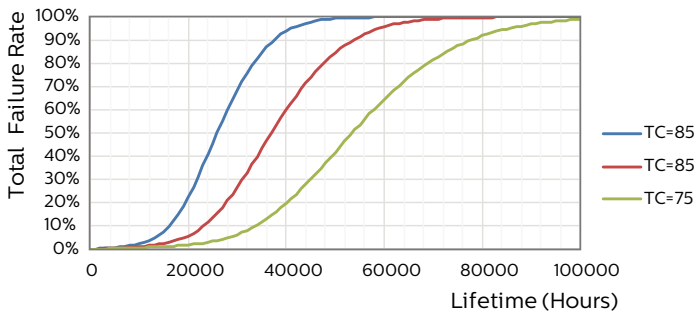
Lumen Maintenance Diagram - 5PL-S/LED/13H/840/IF5/P/2P 20/1

Lumen Maintenance Diagram - 5PL-S/LED/13H/840/IF5/P/2P 20/1



Life Expectancy Diagram - 5PL-S/LED/13H/840/IF5/P/2P 20/1

Life Expectancy Diagram - 5PL-S/LED/13H/840/IF5/P/2P 20/1



Life Expectancy Diagram - 5PL-S/LED/13H/840/IF5/P/2P 20/1

