

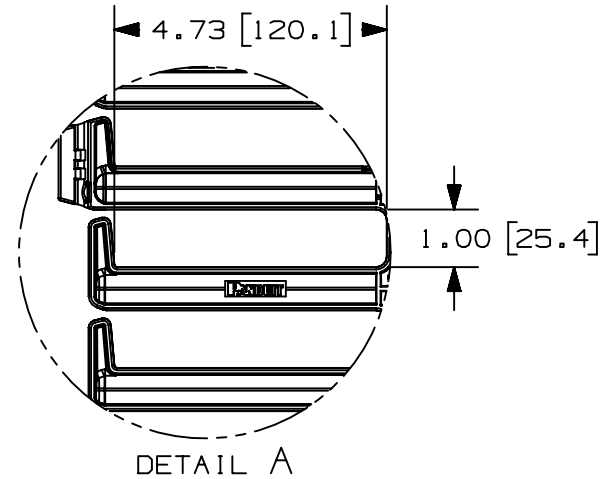
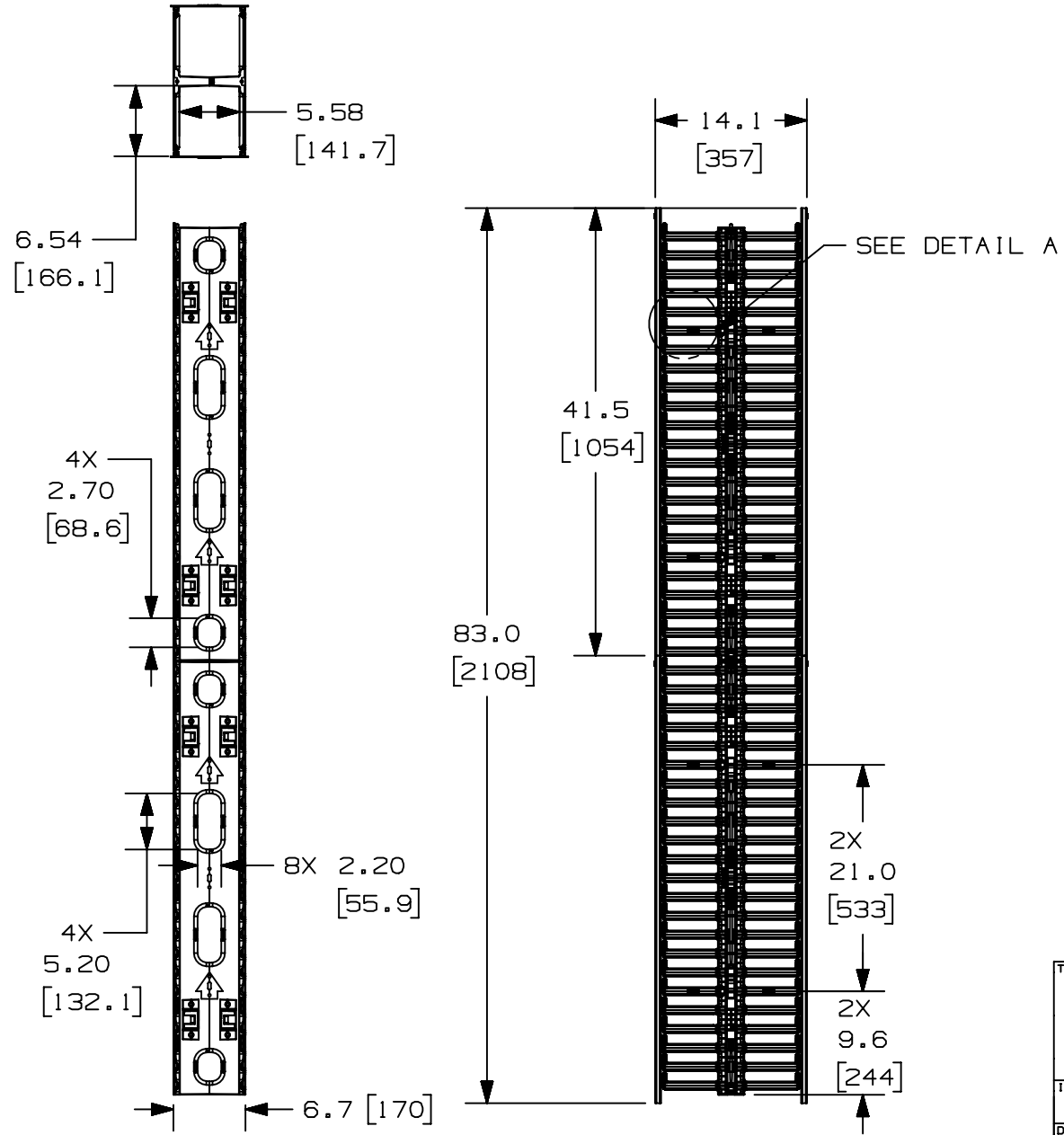
THIS COPY IS PROVIDED ON A RESTRICTED BASIS AND IS NOT TO BE USED IN ANY WAY DETRIMENTAL TO THE INTERESTS OF PANDUIT CORP.

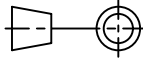
PANDUIT P/N	WEIGHT
WMPVHC45E	23.0 lbs/EACH 10.43 kg/EACH

NOTES:

- VISIT OUR ON-LINE CATALOG AT WWW.PANDUIT.COM FOR A CURRENT LIST OF PRODUCTS APPLICABLE FOR USE WITH THIS PART.
- COMPONENTS:
 2- 22.5RU CABLE MANAGEMENT SECTIONS
 4- 41.5" DUAL HINGE COVERS
 4- MOUNTING BRACKETS
 8- #12-24 X 1/2" SCREWS
- DIMENSIONS IN PARENTHESES ARE METRIC.

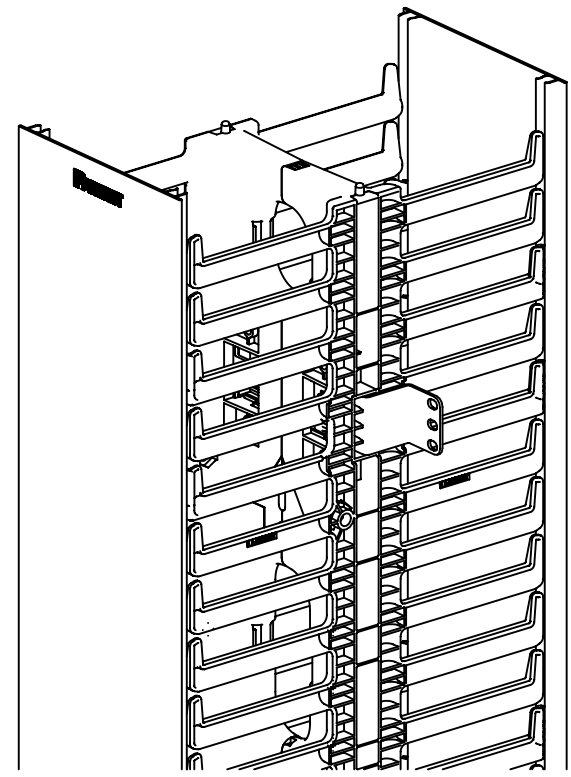
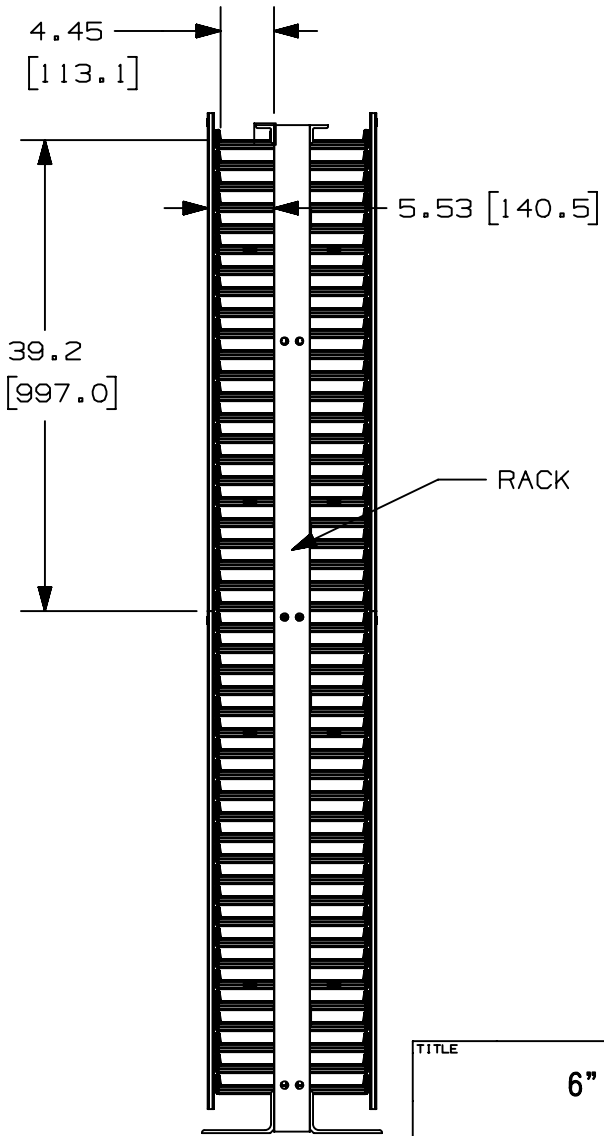
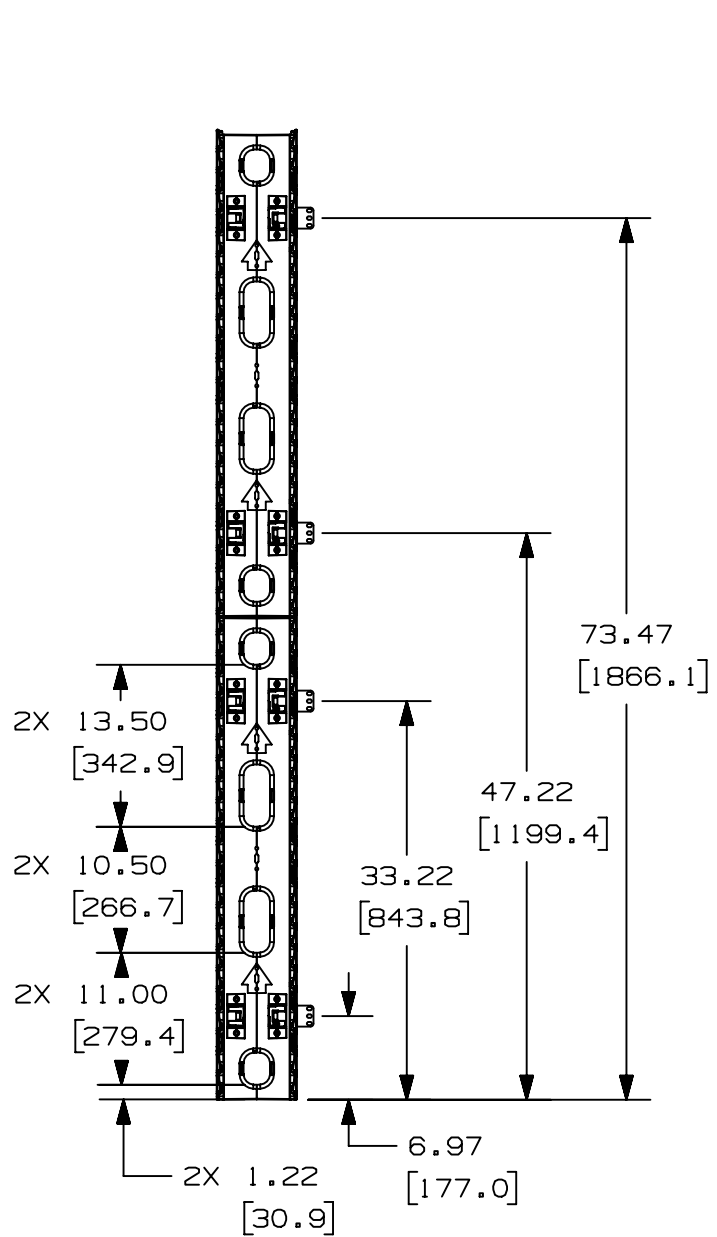
MAX STORAGE TEMPERATURE 65°C (149°F)
 MAX OPERATING TEMPERATURE 60°C (140°F)

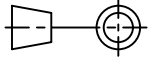


TITLE												
6" WIDE VERTICAL CABLE MANAGER WMPVHC45E												
CUSTOMER DRAWING												
ITEM REVISION NAME					V10225AG/09							
DATASET FILE NAME					V10225AG_DC/09A							
 THIRD ANGLE PROJECTION					PANDUIT							
MATERIAL					DRAWING NUMBER							
CABLE MANAGER- ABS COVER- PVC					10225-25							
REV	DATE	BY	CHK	APR	DESCRIPTION	ECN	DRAWN BY	DATE	CHK	SCALE	SHEET	SIZE
09A	3-23-23	JBO	KRKE	KCOR	UPDATED TRI VIEW TO SHOW LOGO ON COVER VERTICAL CABLE MANAGER FILES UPDATED	M09000SE	JDWE	3-15-05	TCK	NONE	1 OF 2	A

A-SIZE CUSTOMER

THIS COPY IS PROVIDED ON A RESTRICTED BASIS AND IS NOT TO BE USED IN ANY WAY DETRIMENTAL TO THE INTERESTS OF PANDUIT CORP.



TITLE		6" WIDE VERTICAL CABLE MANAGER WMPVHC45E		
		CUSTOMER DRAWING		
ITEM REVISION NAME		V10225AG/09		
DATASET FILE NAME		V10225AG_DC/09A		
		THIRD ANGLE PROJECTION		
MATERIAL		CABLE MANAGER- ABS COVER- PVC		DRAWING NUMBER
				10225-25
DRAWN BY	DATE	CHK	SCALE	SIZE
JDWE	3-15-05	TCK	NONE	A

REV	DATE	BY	CHK	APR	DESCRIPTION	ECN
--	--	--	--	--	REFER TO SHEET 1 FOR REVISION CONTROL	--

A-SIZE CUSTOMER