

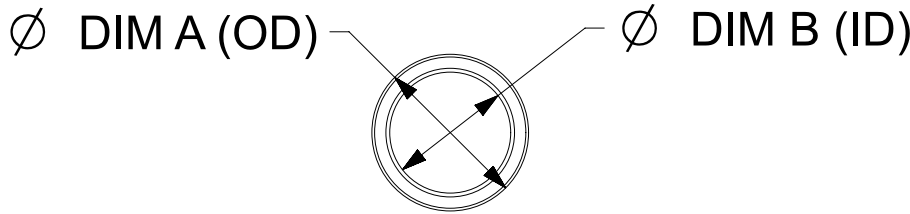
THIS COPY IS PROVIDED ON A RESTRICTED BASIS AND IS NOT TO BE USED IN ANY WAY DETRIMENTAL TO THE INTERESTS OF PANDUIT CORP.

Material: Nylon 6

SLIT PART NUMBERS	NON-SLIT PART NUMBERS	DIM A Target (OD)	DIM B Target (ID)	Wall Thickness
CLT25N-*	CLTS25N-*	0.378 [9.60]	0.281 [7.14]	.007-.023 [0.18-0.51]
CLT35N-*	CLTS35N-*	0.417 [10.59]	0.323 [8.20]	
CLT38N-*	CLTS38N-*	0.535 [13.59]	0.421 [10.69]	
CLT50N-*	CLTS50N-*	0.675 [17.15]	0.518 [13.16]	
CLT62N-*	CLTS62N-*	0.815 [20.70]	0.665 [16.89]	
CLT75N-*	CLTS75N-*	0.933 [23.70]	0.762 [19.35]	.008-.031 [0.20-0.79]
CLT100N-*	CLTS100N-*	1.114 [28.30]	0.917 [23.29]	
CLT125N-*	CLTS125N-*	1.524 [38.71]	1.303 [33.10]	
CLT150N-*	CLTS150N-*	1.728 [43.89]	1.484 [37.69]	
CLT188N-*	NA	2.157 [54.79]	1.870 [47.50]	

Material: Polyethylene

SLIT PART NUMBERS	NON-SLIT PART NUMBERS	DIM A Target (OD)	DIM B Target (ID)	Wall Thickness
CLT25F-*	CLTS25F-*	0.378 [9.60]	0.281 [7.14]	.007-.023 [0.18-0.51]
CLT35F-*	CLTS35F-*	0.417 [10.59]	0.323 [8.20]	
CLT35F-C3	CLTS35F-C3	0.496 [12.60]	0.344 [8.73]	
CLT38F-*	CLTS38F-*	0.535 [13.59]	0.421 [10.69]	
CLT50F-*	CLTS50F-*	0.675 [17.15]	0.518 [13.16]	
CLT62F-*	CLTS62F-*	0.815 [20.70]	0.665 [16.89]	.008-.031 [0.20-0.79]
CLT75F-*	CLTS75F-*	0.933 [23.70]	0.762 [19.35]	
CLT100F-*	CLTS100F-*	1.114 [28.30]	0.917 [23.29]	
CLT125F-*	CLTS125F-*	1.524 [38.71]	1.303 [33.10]	
CLT150F-*	CLTS150F-*	1.728 [43.89]	1.484 [37.69]	
CLT188F-*	NA	2.157 [54.79]	1.870 [47.50]	



- * NOTES:
1. SEE www.panduit.com FOR PART NUMBER SUFFIX DESIGNATION FOR PACKAGE SIZE, PART MATERIAL AND PART COLOR.
 2. FOR ROLL SIZES LARGER THAN 10 FEET, SPLICES MAY OCCUR.
 3. SLIT PART NUMBERS HAVE ONE CONTINUOUS SLIT ALONG ENTIRE LENGTH TUBING.

TITLE		Slit & Non-slit Corrugated Loom Tubing		
CUSTOMER DRAWING				
ITEM REVISION NAME		G03597BN/02		
DATASET FILE NAME		G03597BN_DC/13B		
UNLESS OTHERWISE SPECIFIED, DIMENSIONAL TOLERANCES ARE: IN [mm]				PANDUIT
.X ±		.xxx ± .050 (1.27)		
.XX ±		ANGLES ±		MATERIAL: Nylon 6 or Polyethylene
				DRAWING NUMBER: GB0222BP
DRAWN BY	DATE	CHK	SCALE	SHT 1 OF 1
CPE	9-18-97	VJS	NONE	A

REV	DATE	BY	CHK	APR	DESCRIPTION	ECN
13B	5/1/2024	JEFP	DPG	MSAD	A. REMOVED FLAMMABILITY RATING COLUMN FROM TABLE 1 & 2	GAECN07099
13A	1/4/2024	JEFP	DAPE	MSAD	A. ADDED TABLE COLUMNS REFERENCING THE FLAMMABILITY RATING OF THE CLT PRODUCTS	GAECN07013