

CorePro MainsFit (UL Type-B) T8

12T8/COR/36-5CCT/MF15/G/120-347V 25/1

The CorePro MainsFit (UL Type B) lamps are designed to be the perfect retrofit solution to move from traditional fluorescent lamps to energy saving LEDs. This ballast bypass lamp has everything needed built into the lamp with proven energy savings, long life (up to 50k hours), surge suppression and industry leading safety features. All lamps in the CorePro MainsFit family are double-ended to help simplify the installation. In addition, all lamps meet the Philips standards for light quality so that end users will be in a comfortable environment regardless of the CorePro MainsFit lamp type.

Product data

| General Information | |
|---------------------------------------|-------------------------------|
| Cap-Base | G13 |
| Nominal lifetime | 50,000 hour(s) |
| Switching Cycle | 50,000 |
| Lighting Technology | LED |
| Light Technical | |
| Color Code | 3000K/3500K/4000K/5000K/6500K |
| Beam Angle (Nom) | 220 degree(s) |
| Luminous Flux | 1,550 lm |
| Luminous Efficacy (rated) (Nom) | 129 lm/W |
| Color Designation | 3000K/3500K/4000K/5000K/6500K |
| Correlated Color Temperature (Nom) | 3000 3500 4000 5000 6500 K |
| Color Consistency | <6 |
| Color rendering index (CRI) | 80 |
| LLMF At End Of Nominal Lifetime (Nom) | 70 % |

| Operating and Electrical | |
|---------------------------|---------------|
| Input Frequency | 50 to 60 Hz |
| Power Consumption | 12 W |
| Lamp Current (Nom) | 122 mA |
| Wattage Equivalent | 25 W |
| Starting Time (Nom) | 0.5 s |
| Warm-up time to 60% light | 0.5 s |
| Power Factor (Fraction) | 0.9 |
| Voltage (Nom) | 120-347 V |
| UL Type | UL Type B |
| Temperature | |
| Ambient temperature range | -20 to +45 °C |
| T-Case Maximum (Nom) | 60 °C |

CorePro MainsFit (UL Type-B) T8

Controls and Dimming

| | |
|----------|---------|
| Dimmable | Limited |
|----------|---------|

Mechanical and Housing

| | |
|----------------|---------|
| Bulb Finish | Frosted |
| Bulb Material | Glass |
| Product Length | 900 mm |
| Bulb Shape | T8 |

Approval and Application

| | |
|-----------------------|---|
| Energy Saving Product | Yes |
| Approval Marks | RoHS compliance UL certificate DLC compliance |
| EU RoHS compliant | Yes |

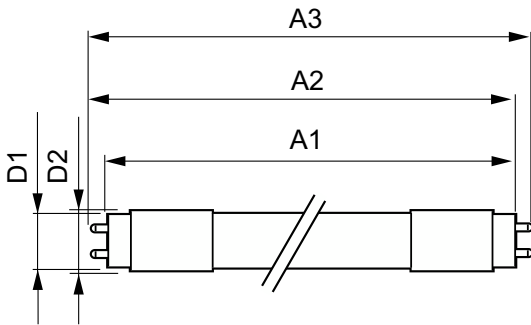
Application Conditions

| | |
|-------------------------------------|-----|
| can it be used in closed luminaires | Yes |
|-------------------------------------|-----|

Product Data

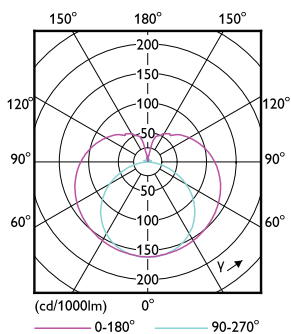
| | |
|---------------------------------|---------------------------------------|
| Order product name | 12T8/COR/36-5CCT/MF15/G/120-347V 25/1 |
| Full product name | 12T8/COR/36-5CCT/MF15/G/120-347V 25/1 |
| Order code | 929003795804 |
| Material Nr. (12NC) | 929003795804 |
| Numerator - Quantity Per Pack | 1 |
| Net Weight (Piece) | 0.155 kg |
| EAN/UPC - Product/Case | 046677588595 |
| Numerator - Packs per outer box | 25 |
| EAN/UPC - Case | 50046677588590 |

Dimensional drawing

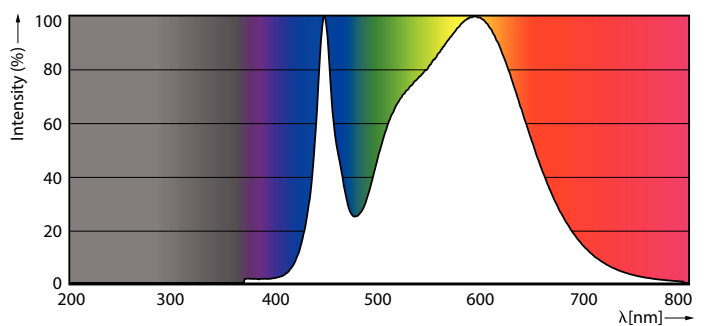


| Product | D1 | D2 | A1 | A2 | A3 |
|---------------------------------------|---------|-------|----------|----------|----------|
| 12T8/COR/36-5CCT/MF15/G/120-347V 25/1 | 25.7 mm | 29 mm | 894.6 mm | 901.7 mm | 908.8 mm |

Photometric data



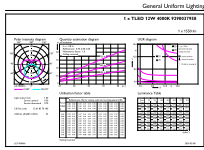
Light Distribution Diagram - 12T8/COR/36-5CCT/MF15/G/120-347V 25/1



Spectral Power Distribution Colour - 12T8/COR/36-5CCT/MF15/G/120-347V 25/1

CorePro MainsFit (UL Type-B) T8

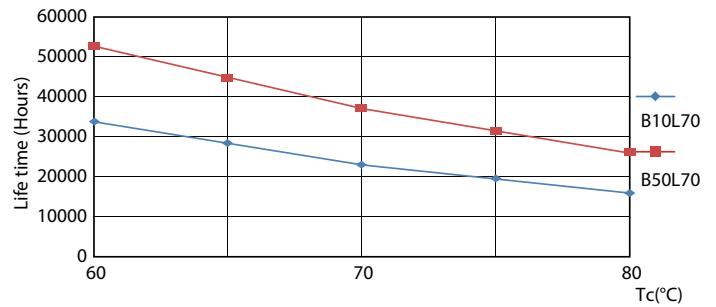
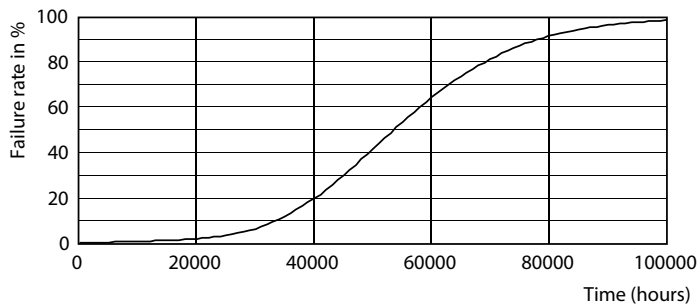
Photometric data



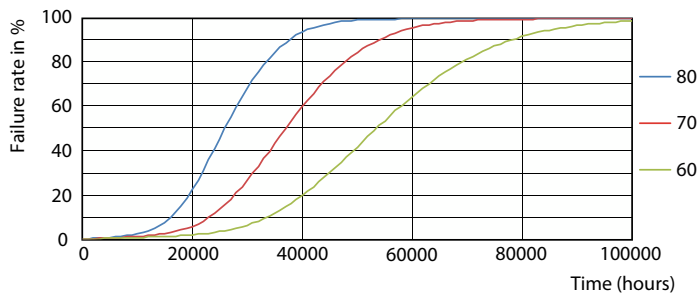
General Parameters 43 Page 10

General uniform lighting - 12T8/COR/36-5CCT/MF15/G/120-347V 25/1

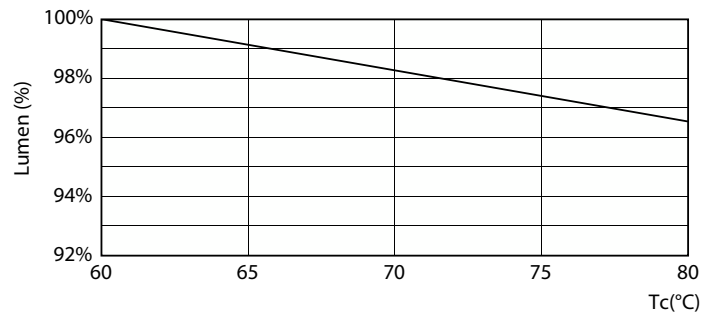
Lifetime



Life Expectancy Diagram



LifetimeVsTc

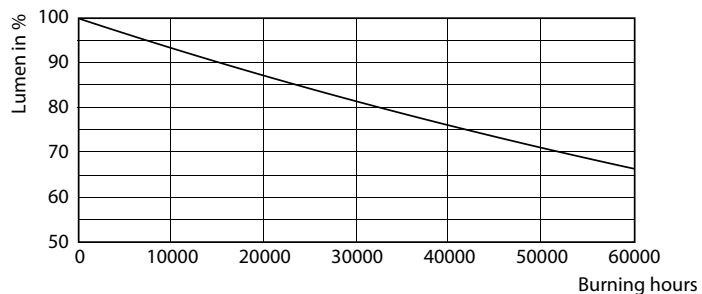


FailureRate

Lumen Maintenance Diagram - 12T8/COR/36-5CCT/MF15/G/120-347V 25/1

CorePro MainsFit (UL Type-B) T8

Lifetime



Lumen Maintenance Diagram - 12T8/COR/36-5CCT/MF15/G/120-347V 25/1

