



CorePro MainsFit (UL Type-B) T8

7T8/COR/24-5CCT/MF9/G/120-347V 25/1

The CorePro MainsFit (UL Type B) lamps are designed to be the perfect retrofit solution to move from traditional fluorescent lamps to energy saving LEDs. This ballast bypass lamp has everything needed built into the lamp with proven energy savings, long life (up to 50k hours), surge suppression and industry leading safety features. All lamps in the CorePro MainsFit family are double-ended to help simplify the installation. In addition, all lamps meet the Philips standards for light quality so that end users will be in a comfortable environment regardless of the CorePro MainsFit lamp type.

Product data

General Information		Operating and Electrical	
Cap-Base	G13	Input Frequency	50 to 60 Hz
Nominal lifetime	50,000 hour(s)	Power Consumption	7 W
Switching Cycle	50,000	Lamp Current (Nom)	71 mA
Lighting Technology	LED	Wattage Equivalent	17 W
		Starting Time (Nom)	0.5 s
		Warm-up time to 60% light	0.5 s
		Power Factor (Fraction)	0.9
		Voltage (Nom)	120-347 V
		UL Type	UL Type B
Light Technical		Temperature	
Color Code	3000K/3500K/4000K/5000K/6500K	Ambient temperature range	-20 to +45 °C
Beam Angle (Nom)	220 degree(s)	T-Case Maximum (Nom)	60 °C
Luminous Flux	950 lm		
Luminous Efficacy (rated) (Nom)	135 lm/W		
Color Designation	3000K/3500K/4000K/5000K/6500K		
Correlated Color Temperature (Nom)	3000 3500 4000 5000 6500 K		
Color Consistency	<6		
Color rendering index (CRI)	80		
LLMF At End Of Nominal Lifetime (Nom)	70 %		

CorePro MainsFit (UL Type-B) T8

Controls and Dimming

Dimmable	Limited
----------	---------

Mechanical and Housing

Bulb Finish	Frosted
Bulb Material	Glass
Product Length	600 mm
Bulb Shape	T8

Approval and Application

Energy Saving Product	Yes
Approval Marks	RoHS compliance UL certificate DLC compliance
EU RoHS compliant	Yes

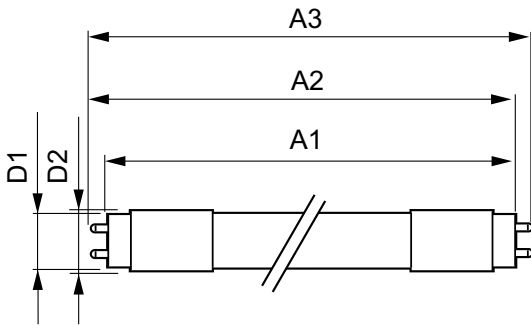
Application Conditions

can it be used in closed luminaires	Yes
-------------------------------------	-----

Product Data

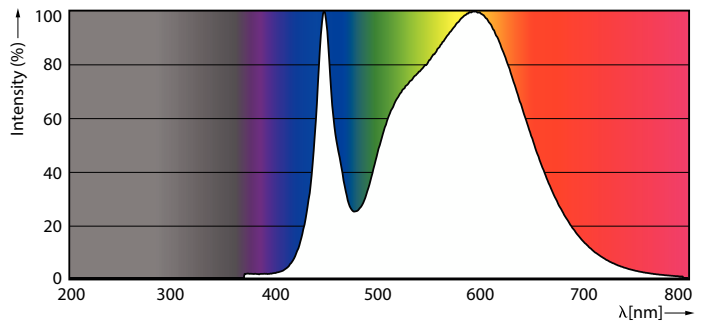
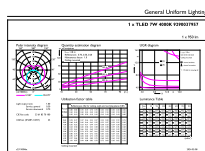
Order product name	7T8/COR/24-5CCT/MF9/G/120-347V 25/1
Full product name	7T8/COR/24-5CCT/MF9/G/120-347V 25/1
Order code	929003795704
Material Nr. (12NC)	929003795704
Numerator - Quantity Per Pack	1
Net Weight (Piece)	0.105 kg
EAN/UPC - Product/Case	046677588588
Numerator - Packs per outer box	25
EAN/UPC - Case	50046677588583

Dimensional drawing



Product	D1	D2	A1	A2	A3
7T8/COR/24-5CCT/MF9/G/120-347V 25/1	25.7 mm	29 mm	589.8 mm	596.9 mm	604 mm

Photometric data

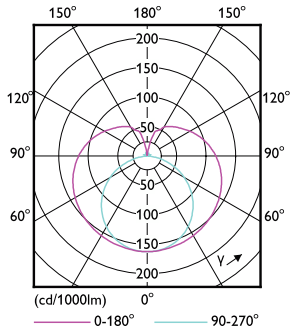


General uniform lighting - 7T8/COR/24-5CCT/MF9/G/120-347V 25/1

Spectral Power Distribution Colour - 7T8/COR/24-5CCT/MF9/G/120-347V 25/1

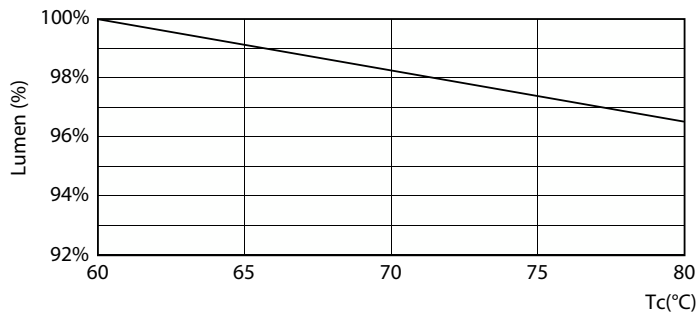
CorePro MainsFit (UL Type-B) T8

Photometric data

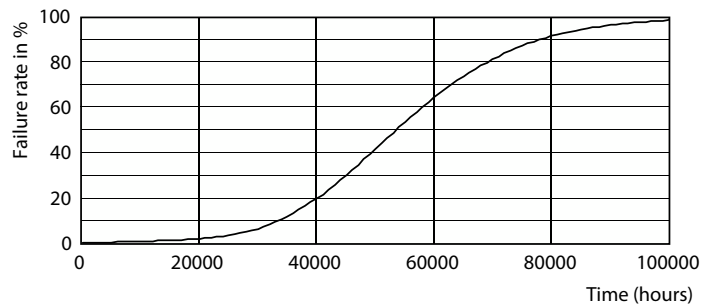


Light Distribution Diagram - 7T8/COR/24-5CCT/MF9/G/120-347V 25/1

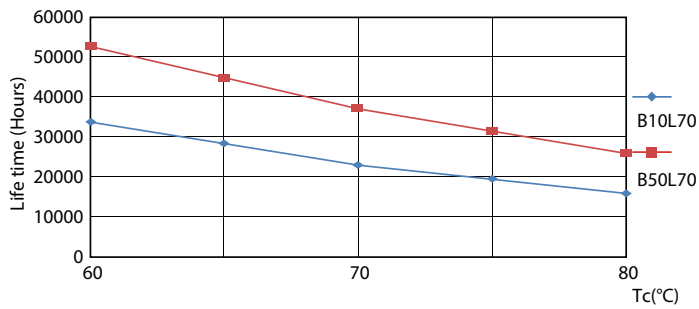
Lifetime



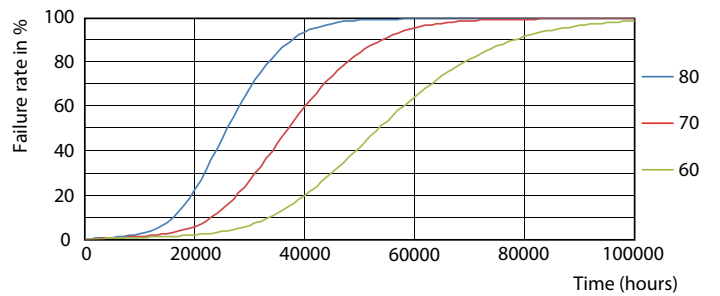
Lumen Maintenance Diagram - 7T8/COR/24-5CCT/MF9/G/120-347V 25/1



Life Expectancy Diagram



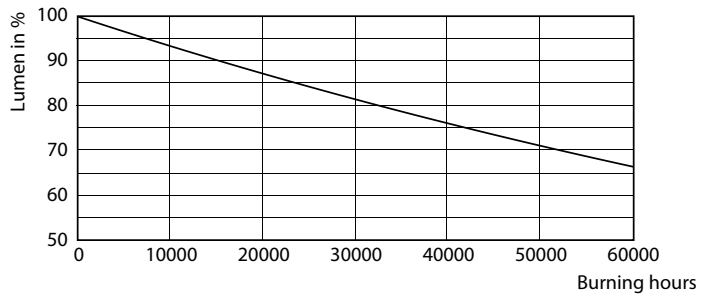
LifetimeVsTc



FailureRate

CorePro MainsFit (UL Type-B) T8

Lifetime



Lumen Maintenance Diagram - 7T8/COR/24-5CCT/MF9/G/120-347V 25/1

