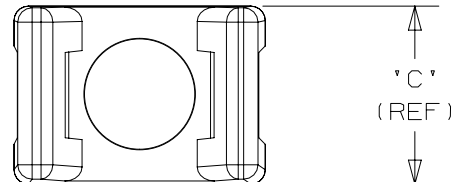
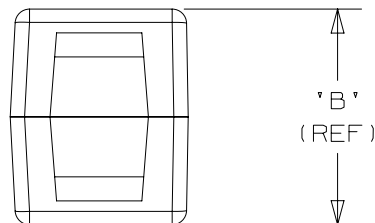
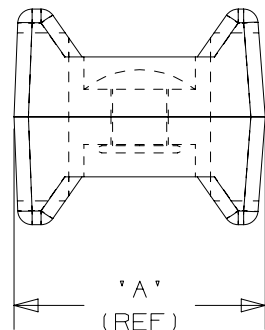


THIS COPY IS PROVIDED ON A RESTRICTED BASIS AND IS NOT TO BE USED IN ANY WAY DETRIMENTAL TO THE INTERESTS OF PANDUIT CORP.



6

PANDUIT PART NO.*	DIMENSIONS			USE WITH ANY OF THESE CABLE TIES	WEIGHT lbs / 100 (g) / pcs.
	'A'	'B'	'C'		
TM3-X2--	0.87 [22.10]	0.75 [19.05]	0.62 [15.75]	M, I, S, LH	0.97 [438.9]
TM1-X2--	0.52 [13.21]	0.46 [11.68]	0.32 [8.13]	M	0.17 [77.1]



NOTES:

1. SEE CURRENT PRICE SHEET FOR PART NUMBER SUFFIX DESIGNATION FOR PACKAGE SIZE AND COLOR OPTIONS.

2. CABLE TIE CROSS-SECTION CODE:

M = MINATURE
I = INTERMEDIATE
S = STANDARD
LH = LIGHT HEAVY

3. RIVET MATERIAL: ALUMINUM

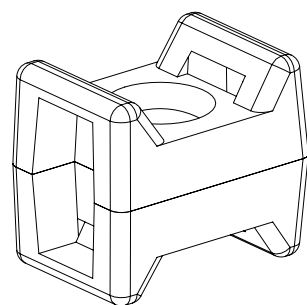
4. MILLIMETERS ARE IN [].

6

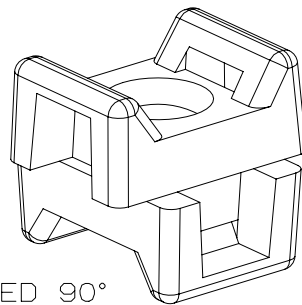
6

7

SEE www.panduit.com FOR CURRENT PART NUMBER SUFFIX DESIGNATION, PACKAGE SIZE AND PART COLOR.



ROTATED 90°



TITLE
SWIVEL TIE MOUNT - (TM_-X2-_-)

CUSTOMER DRAWING

ITEM REVISION NAME

10B015IN/02

DATASET FILE NAME

10B015IN/00_DC_GB2446A_DC r07

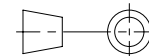
UNLESS OTHERWISE SPECIFIED,
DIMENSIONAL TOLERANCES ARE: IN [mm]

.x ± .1 [2.54]

.xxx ± .005 [.127]

.xx ± .01 [.25]

ANGLES ± 5 °



THIRD ANGLE
PROJECTION

MATERIAL:

AS NOTED

DRAWING NUMBER:

GB2446BA

7	10/26/21	BWG	MPH	JADE	REVISED NOTE 3.	113983/00
6	6/3/15	RVU	CLW	JHAC	CHANGE NOTE 3, FROM 5056-S TO 5056-H32. UPDATE FORMAT A. ADD NOTE 4. UPDATE TABLE.	GAECN02899
5	2/28/13	BWG	MPH	PBC	REMOVED MOUNT MATERIAL NOTE, ADDED STANDARD MATERIAL WWW.PANDUIT.COM NOTE. CREATED NEW CADFILE.	GB2446BA
REV	DATE	BY	CHK	APR	DESCRIPTION	ECN

DRAWN BY	DATE	CHK	SCALE	SHT 1 OF 1	SIZE
JAD	11/01/00	MPH	1.5X		A