



# MainsFit (UL Type-B) T5

## 25T5HO/COR/46-850/MF35/G 25/1

The MainsFit (UL Type-B) lamps are designed to be the perfect retrofit solution to move from traditional fluorescent lamps to energy saving LEDs. This ballast bypass lamp has everything needed built into the lamp with proven energy savings, long life, surge suppression and industry leading safety features. All lamps in the MainsFit family are double-ended to help simplify the installation. In addition, all lamps meet the Philips standards for light quality so that end users will be in a comfortable environment regardless of the MainsFit lamp type.

### Product data

General Information	
Cap-Base	G5
Nominal lifetime	50,000 hour(s)
Switching Cycle	50,000
Lighting Technology	LED

Light Technical	
Color Code	850 [CCT of 5000K]
Beam Angle (Nom)	200 degree(s)
Luminous Flux	3,500 lm
Color Designation	Daylight
Luminous Efficacy (rated) (Nom)	140.00 lm/W
Correlated Color Temperature (Nom)	5000 K
Color Consistency	<5
Color rendering index (CRI)	80
LLMF At End Of Nominal Lifetime (Nom)	70 %

Operating and Electrical	
Line Frequency	50 to 60 Hz
Input Frequency	50 to 60 Hz
Power Consumption	25 W
Lamp Current (Max)	250 mA
Lamp Current (Min)	95 mA
Wattage Equivalent	54 W
Starting Time (Nom)	0.5 s
Warm-up time to 60% light	0.5 s
Power Factor (Fraction)	0.9
Voltage (Nom)	120-277 V
UL Type	UL Type B

Temperature	
Ambient temperature range	-4 °F to 113 °F
T-Case Maximum (Nom)	167 °F

# MainsFit (UL Type-B) T5

## Controls and Dimming

Dimmable	Limited
----------	---------

## Mechanical and Housing

Bulb Finish	Frosted
Bulb Material	Glass
Product Length	47-1/4 inch
Bulb Shape	T5

## Approval and Application

Energy Saving Product	Yes
Approval Marks	RoHS compliance UL certificate DLC compliance
EU RoHS compliant	Yes

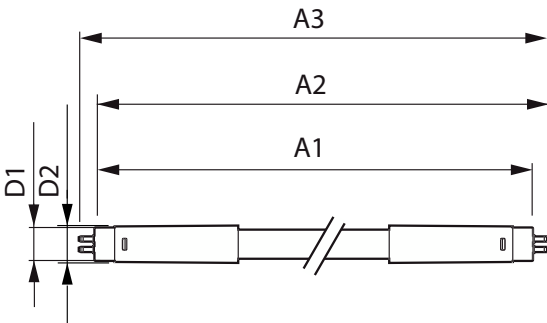
## Application Conditions

can it be used in closed luminaires	Yes
-------------------------------------	-----

## Product Data

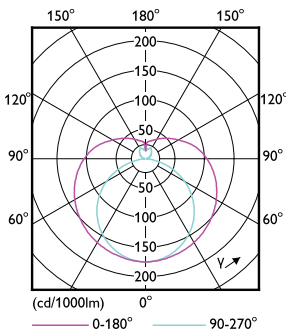
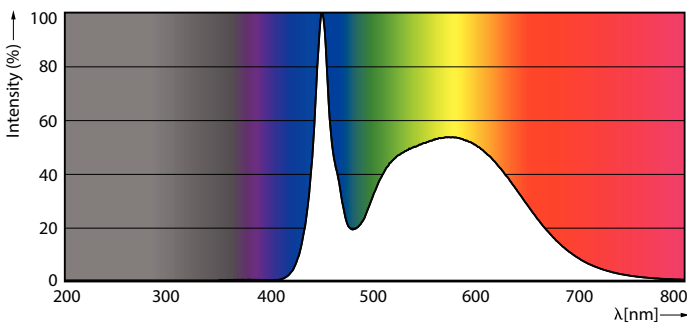
Order product name	25T5HO/COR/46-850/MF35/G 25/1
Full product name	25T5HO/COR/46-850/MF35/G 25/1
Order code	576256
Material Nr. (12NC)	929003122604
Numerator - Quantity Per Pack	1
Net Weight (Piece)	0.333 lb
EAN/UPC - Product/Case	046677576257
Numerator - Packs per outer box	25
EAN/UPC - Case	50046677576252

## Dimensional drawing



Product	D1	D2	A1	A2	A3
25T5HO/COR/46-850/MF35/G 25/1	5/8 inch	3/4 inch	45-1/4 inch	45-1/2 inch	45-13/16 inch

## Photometric data

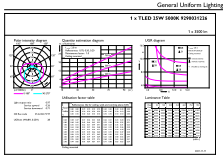


Spectral Power Distribution Colour - 25T5HO/COR/46-850/MF35/G 25/1

Light Distribution Diagram - 25T5HO/COR/46-850/MF35/G 25/1

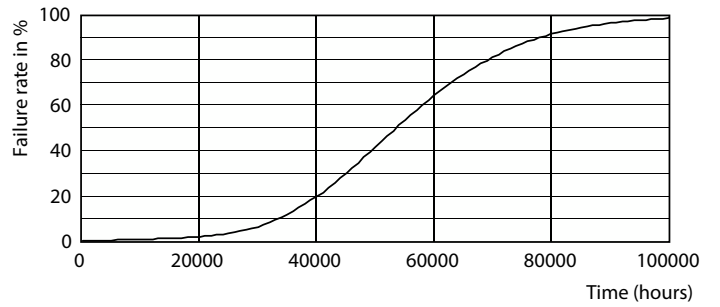
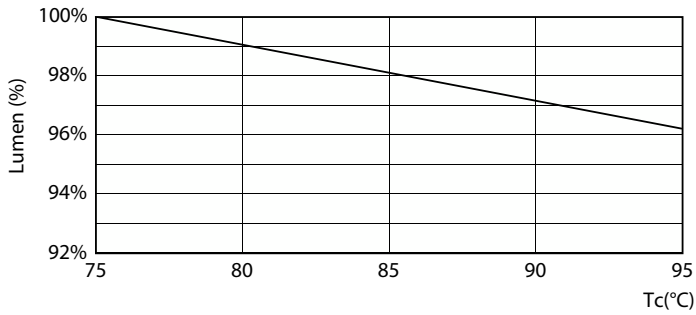
# MainsFit (UL Type-B) T5

## Photometric data



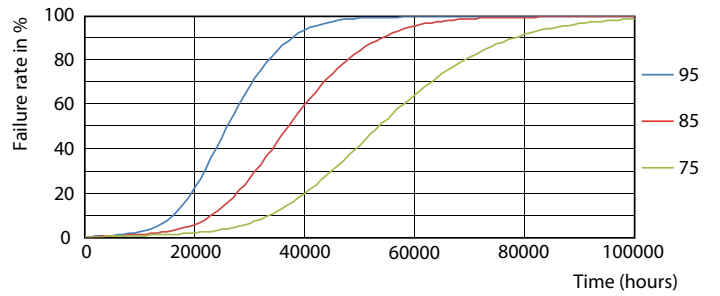
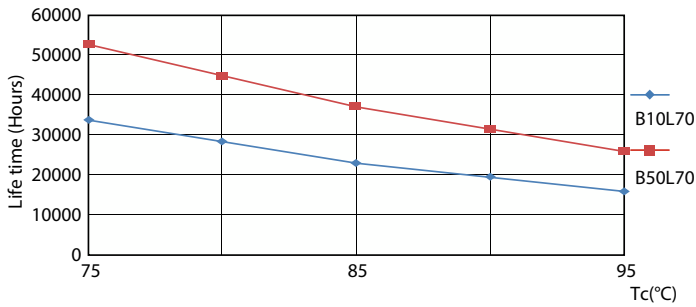
General uniform lighting - 25T5HO/COR/46-850/MF35/G 25/1

## Lifetime



Lumen Maintenance Diagram - 25T5HO/COR/46-850/MF35/G 25/1

Life Expectancy Diagram



LEDtube 50K 7595 LifetimeVsTc-LED

LEDtube 50K 7595 FailureRate-LED

## MainsFit (UL Type-B) T5

