



# Contractor-grade MainsFit (UL Type-B) T8

## 14.5T8/CNG/48-835/MF17/G 25/1

The Contractor-grade MainsFit (UL Type B) lamps are designed to provide simple retrofit solution to move from traditional fluorescent lamps to energy saving LEDs. This ballast bypass lamp is similar to other UL Type B lamps in the Philips family by providing proven energy savings, long life (50k hours), surge suppression and industry leading safety features. All lamps in the Contractor-grade family are also double-ended to help simplify the installation.

### Product data

General Information		LLMF At End Of Nominal Lifetime (Nom) 70 %	
Cap-Base	G13 [Medium Bi-Pin Fluorescent]		
Nominal lifetime	50,000 hour(s)		
Switching Cycle	50,000		
Lighting Technology	LED		
Light Technical		Operating and Electrical	
Color Code	835 [CCT of 3500K]	Line Frequency	50 to 60 Hz
Beam Angle (Nom)	240 degree(s)	Input Frequency	50 to 60 Hz
Luminous Flux	1,750 lm	Power Consumption	14.5 W
Color Designation	White (WH)	Lamp Current (Max)	125 mA
Luminous Efficacy (rated) (Nom)	120.00 lm/W	Lamp Current (Min)	58 mA
Correlated Color Temperature (Nom)	3500 K	Wattage Equivalent	32 W
Color Consistency	<6	Starting Time (Nom)	0.5 s
Color rendering index (CRI)	80	Warm-up time to 60% light	0.5 s
		Power Factor (Fraction)	0.9
		Voltage (Nom)	120-277 V
		UL Type	UL Type B

# Contractor-grade MainsFit (UL Type-B) T8

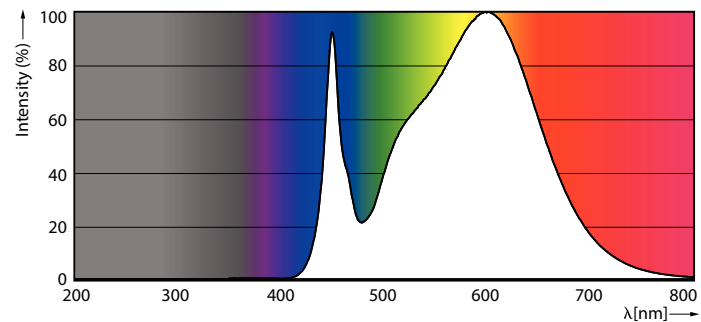
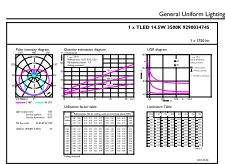
<b>Temperature</b>	
Ambient temperature range	-20 °C to 45 °C
T-Case Maximum (Nom)	70 °C
<b>Controls and Dimming</b>	
Dimmable	Limited
<b>Mechanical and Housing</b>	
Bulb Finish	Frosted
Bulb Material	Glass
Product Length	1,200 mm
Bulb Shape	T8
<b>Approval and Application</b>	
Energy Saving Product	Yes
Approval Marks	RoHS compliance UL certificate DLC compliance

EU RoHS compliant	Yes
<b>Application Conditions</b>	
can it be used in closed luminaires	Yes
<b>Product Data</b>	
Order product name	14.5T8/CNG/48-835/MF17/G 25/1
Full product name	14.5T8/CNG/48-835/MF17/G 25/1
Order code	577767
Material Nr. (12NC)	929003474504
Numerator - Quantity Per Pack	1
Net Weight (Piece)	0.190 kg
EAN/UPC - Product/Case	046677577766
Numerator - Packs per outer box	25
EAN/UPC - Case	50046677577761

## Dimensional drawing

Product	D1	D2	A1	A2	A3
14.5T8/CNG/48-835/MF17/G 25/1	25.7 mm	28 mm	1,198.2 mm	1,205.3 mm	1,212.4 mm

## Photometric data

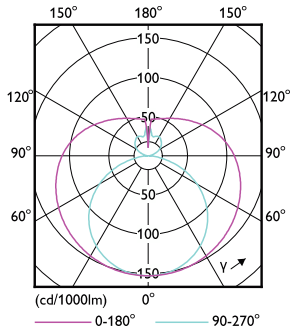


General uniform lighting - 14.5T8/CNG/48-835/MF17/G 25/1

Spectral Power Distribution Colour - 14.5T8/CNG/48-835/MF17/G 25/1

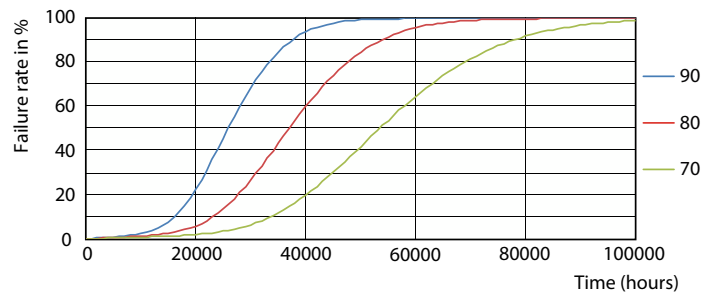
# Contractor-grade MainsFit (UL Type-B) T8

## Photometric data



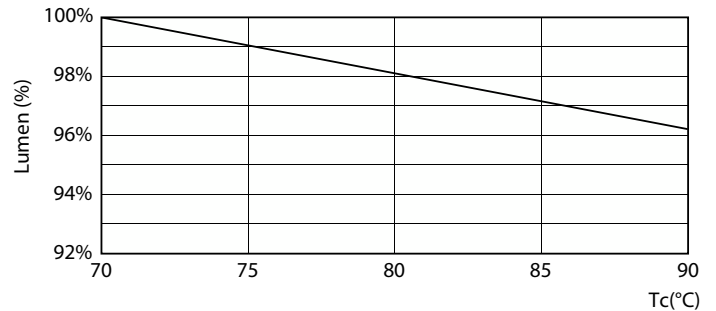
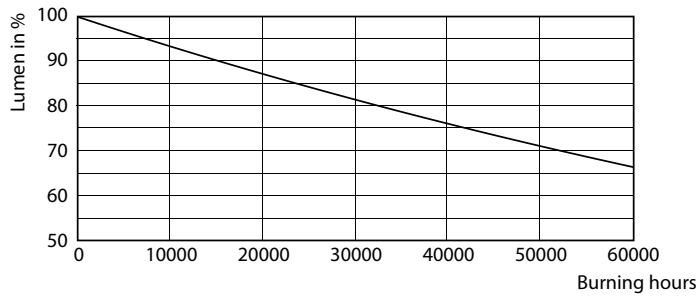
Light Distribution Diagram - 14.5T8/CNG/48-835/MF17/G 25/1

## Lifetime



Life Expectancy Diagram

LEDtube 50K 7090 FailureRate-LED

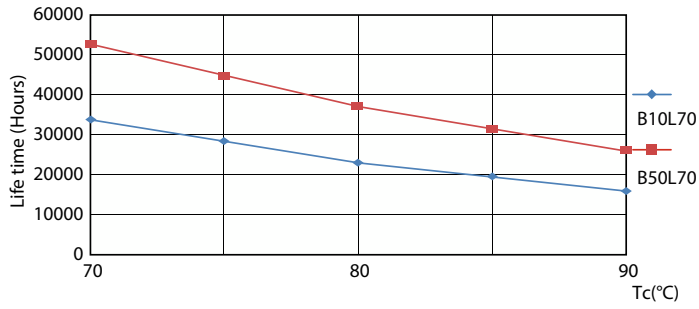


Lumen Maintenance Diagram - 14.5T8/CNG/48-835/MF17/G 25/1

Lumen Maintenance Diagram - 14.5T8/CNG/48-835/MF17/G 25/1

# Contractor-grade MainsFit (UL Type-B) T8

## Lifetime



LifetimeVsTc

