



T8

10.5T8/MAS/48-835/MF15/P 10/1

Our TLEDs are available in InstantFit (Type A / Type C) or MainsFit (Ballast bypass / Type B) versions. The InstantFit lamps work on a broad variety of ballasts and LED drivers. Only InstantFit has over 15,000 lamp & ballast combinations delivering even light output, energy savings and a long lifetime. Our MainsFit products feature a double-ended design, simplifying installation while a proprietary safety circuit minimizes a shock risk. Lamp sizes range from 2-foot to 8-foot and U-bend with a variety of lumen outputs.

Product data

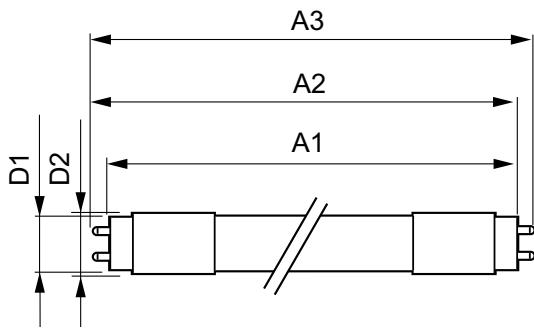
General Information		Input Frequency	
Cap-Base	G13 [Medium Bi-Pin Fluorescent]	Power Consumption	10.5 W
Nominal lifetime	70,000 hour(s)	Lamp Current (Max)	100 mA
Switching Cycle	50,000	Lamp Current (Min)	43 mA
Lighting Technology	LED	Wattage Equivalent	32 W
EU RoHS compliant	Yes	Starting Time (Nom)	0.5 s
		Warm-up time to 60% light	0.5 s
Light Technical		Power Factor (Fraction)	0.9
Color Code	835 [CCT of 3500K]	Voltage (Nom)	120-277 V
Beam Angle (Nom)	180 degree(s)	UL Type	Type B - bypass the ballast
Luminous Flux	1,600 lm	Temperature	
Color Designation	White (WH)	Ambient temperature range	-4 °F to 113 °F
Correlated Color Temperature (Nom)	3500 K	T-Case Maximum (Nom)	158 °F
Luminous Efficacy (rated) (Nom)	152.00 lm/W	Controls and Dimming	
Color Consistency	<6	Dimmable	Limited
Color rendering index (CRI)	80	Mechanical and Housing	
LLMF At End Of Nominal Lifetime (Nom)	70 %	Bulb Finish	Frosted
Operating and Electrical			
Line Frequency	50 to 60 Hz		

T8

Bulb Material	Plastic
Product Length	47-1/4 inch
Bulb Shape	T8
Approval and Application	
Energy Saving Product	Yes
Approval Marks	RoHS compliance UL certificate DLC compliance
Product Data	
Order product name	10.5T8/MAS/48-835/MF15/P 10/1

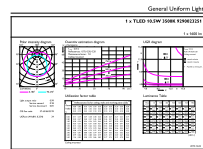
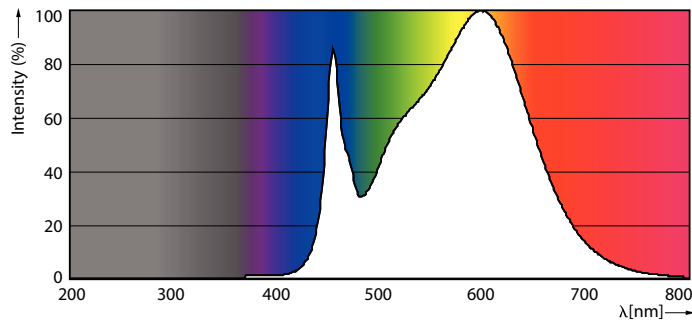
Full product name	10.5T8/MAS/48-835/MF15/P 10/1
Order code	575480
Material Nr. (12NC)	929002325134
Numerator - Quantity Per Pack	1
EAN/UPC - Product/Case	046677575489
Numerator - Packs per outer box	10
EAN/UPC - Case	50046677575484

Dimensional drawing



Product	D1	D2	A1	A2	A3
10.5T8/MAS/48-835/MF15/P 10/1	1-1/16 inch	1-1/8 inch	47-3/16 inch	47-1/2 inch	47-3/4 inch

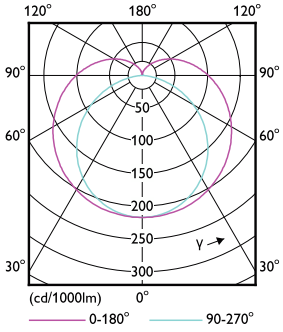
Photometric data



Spectral Power Distribution Colour - 10.5T8/MAS/48-835/MF15/P 10/1

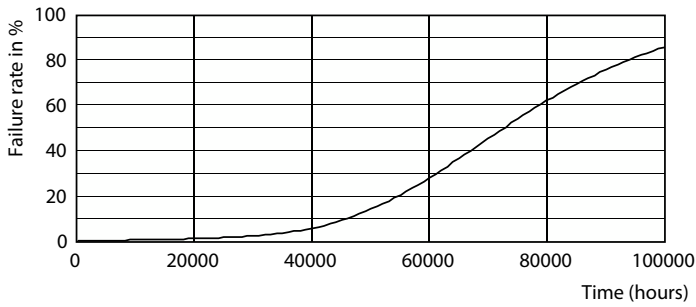
General uniform lighting - 10.5T8/MAS/48-835/MF15/P 10/1

Photometric data

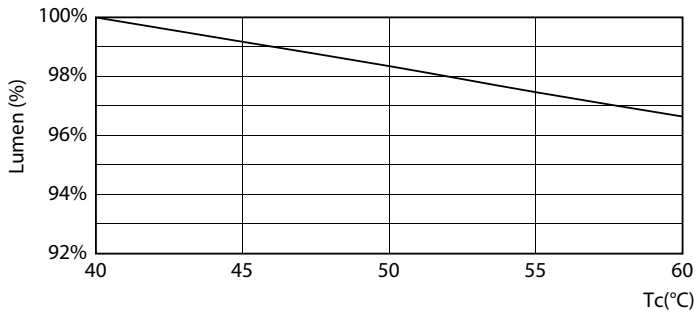


Light Distribution Diagram - 10.5T8/MAS/48-835/MF15/P 10/1

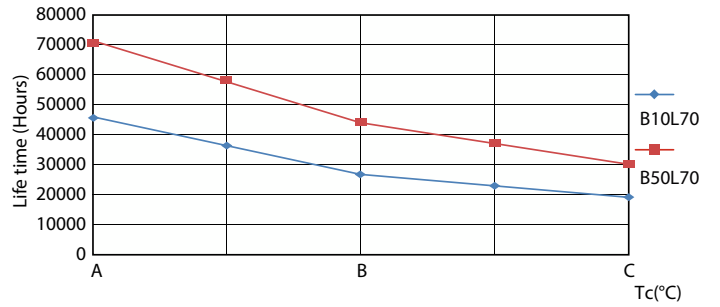
Lifetime



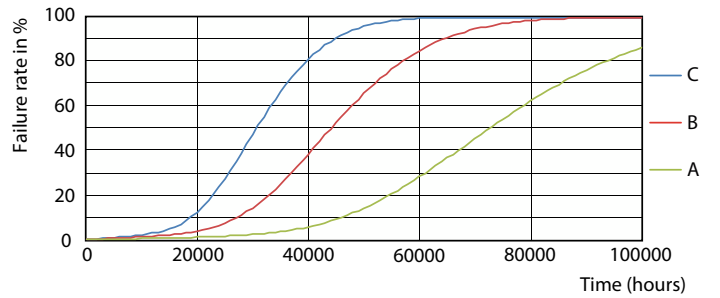
Life Expectancy Diagram - 10.5T8/MAS/48-835/MF15/P 10/1



Lumen Maintenance Diagram - 10.5T8/MAS/48-835/MF15/P 10/1



Life Expectancy Diagram - 10.5T8/MAS/48-835/MF15/P 10/1



Life Expectancy Diagram - 10.5T8/MAS/48-835/MF15/P 10/1

T8

Lifetime



Lumen Maintenance Diagram - 10.5T8/MAS/48-835/MF15/P 10/1

