



T8

14T8/COR/48-840/MF18/G 10/1

Our TLEDs are available in InstantFit (Type A / Type C) or MainsFit (Ballast bypass / Type B) versions. The InstantFit lamps work on a broad variety of ballasts and LED drivers. Only InstantFit has over 15,000 lamp & ballast combinations delivering even light output, energy savings and a long lifetime. Our MainsFit products feature a double-ended design, simplifying installation while a proprietary safety circuit minimizes a shock risk. Lamp sizes range from 2-foot to 8-foot and U-bend with a variety of lumen outputs.

Product data

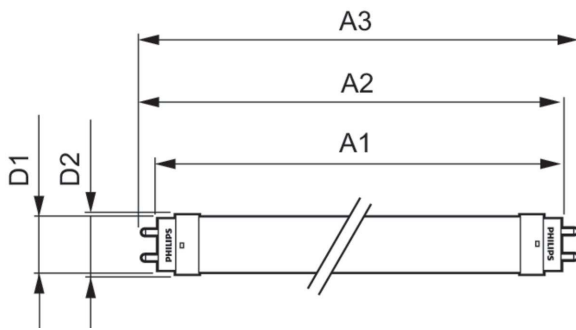
General Information		Input Frequency	
Cap-Base	G13 [Medium Bi-Pin Fluorescent]	Input Frequency	50 to 60 Hz
Nominal lifetime	50,000 hour(s)	Power Consumption	14 W
Switching Cycle	50,000	Lamp Current (Max)	130 mA
Lighting Technology	LED	Lamp Current (Min)	47 mA
EU RoHS compliant	Yes	Starting Time (Nom)	0.5 s
		Warm-up time to 60% light	0.5 s
		Power Factor (Fraction)	0.9
		Voltage (Nom)	120-277 V
		UL Type	Type B - bypass the ballast
Light Technical		Temperature	
Color Code	840 [CCT of 4000K]	Ambient temperature range	-4 °F to 113 °F
Beam Angle (Nom)	240 degree(s)	T-Case Maximum (Nom)	158 °F
Luminous Flux	1,800 lm		
Color Designation	Cool White (CW)	Controls and Dimming	
Correlated Color Temperature (Nom)	4000 K	Dimmable	No
Luminous Efficacy (rated) (Nom)	128.00 lm/W		
Color Consistency	<6	Mechanical and Housing	
Color rendering index (CRI)	80	Bulb Finish	Frosted
LLMF At End Of Nominal Lifetime (Nom)	70 %	Bulb Material	Glass
Operating and Electrical			
Line Frequency	50 to 60 Hz		

T8

Product Length	47-1/4 inch
Bulb Shape	T8
Approval and Application	
Energy Saving Product	Yes
Approval Marks	RoHS compliance UL certificate DLC compliance
Energy Consumption kWh/1000 h	- kWh
Product Data	
Order product name	14T8/COR/48-840/MF18/G 10/1

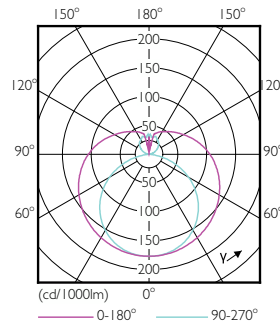
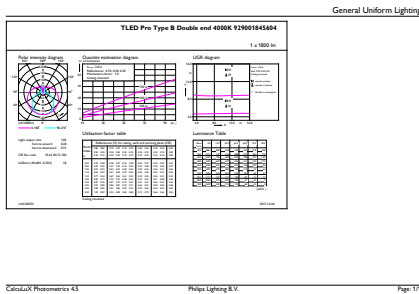
Full product name	14T8/COR/48-840/MF18/G 10/1
Order code	477331
Material Nr. (12NC)	929001845634
Numerator - Quantity Per Pack	1
EAN/UPC - Product/Case	046677477332
Numerator - Packs per outer box	10
EAN/UPC - Case	50046677477337

Dimensional drawing



Product	D1	D2	A1	A2	A3
14T8/COR/48-840/MF18/G 10/1	1-1/16 inch	1-1/8 inch	47-3/16 inch	47-1/2 inch	47-3/4 inch

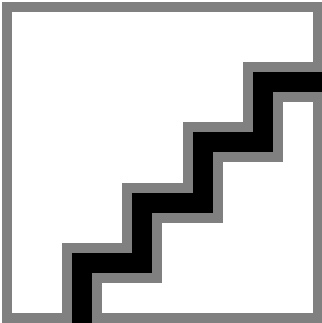
Photometric data



General uniform lighting - 14T8/COR/48-840/MF18/G 10/1

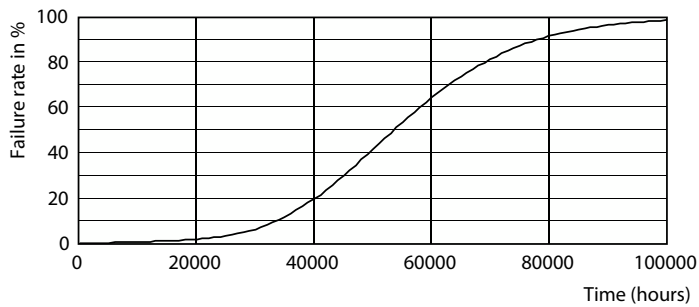
Light Distribution Diagram - 14T8/COR/48-840/MF18/G 10/1

Photometric data

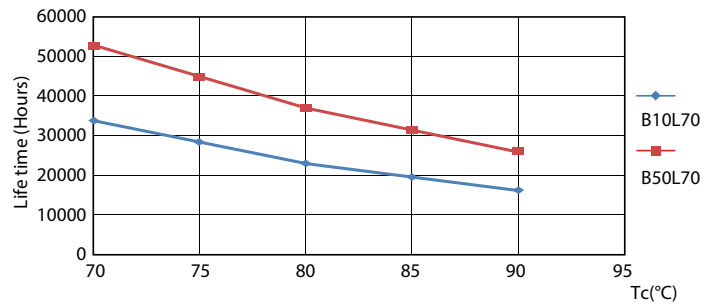


Spectral Power Distribution Colour - 14T8/COR/48-840/MF18/G 10/1

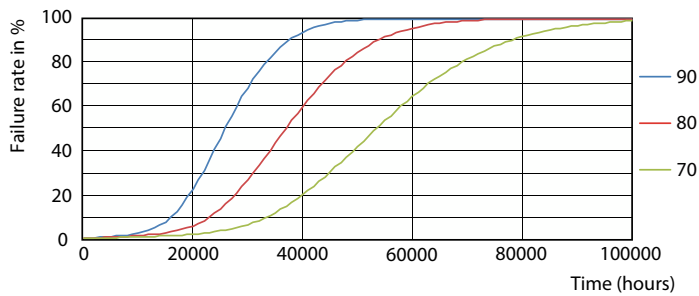
Lifetime



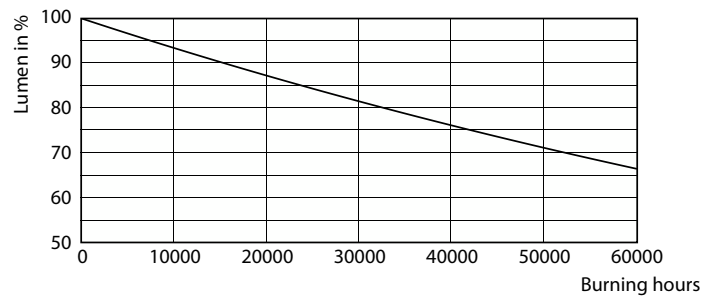
Life Expectancy Diagram - 14T8/COR/48-840/MF18/G 10/1



Life Expectancy Diagram - 14T8/COR/48-840/MF18/G 10/1



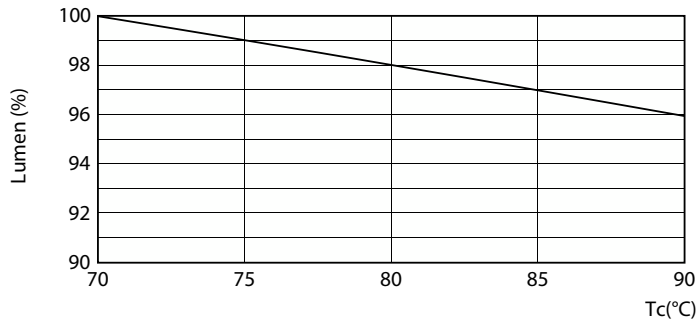
Life Expectancy Diagram - 14T8/COR/48-840/MF18/G 10/1



Lumen Maintenance Diagram - 14T8/COR/48-840/MF18/G 10/1

T8

Lifetime



Lumen Maintenance Diagram - 14T8/COR/48-840/MF18/G 10/1

