



# InstantFit (UL Type-A) T5

## 11T5HE/34-840/IF15/G/DIM 10/1

The InstantFit TLED lamps provide hassle-free installation with simple lamp-for-lamp replacements. They deliver what we promise, with at least 40% energy savings, flicker-free performance, and the life you would expect. Other lamps claim compatibility but only InstantFit (UL Type-A) has been proven to work with over 200 ballasts and drivers, delivering even light output, with proven energy savings and a long average lifetime. End users will be delighted being under these comfortable and high quality InstantFit lamps with no visible flicker and optimized optics. Energy managers will enjoy the InstantFit lamps too as they can count the savings delivered by our lamps. To enjoy more energy savings, the InstantFit lamps can be paired with the Advance TLED drivers to create a Type C system.

### Product data

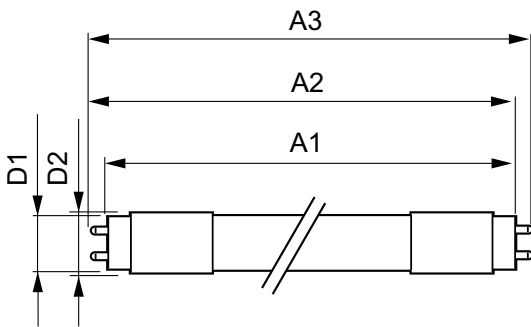
General Information		LLMF At End Of Nominal Lifetime (Nom)	
Cap-Base	G5		70 %
Nominal lifetime	50,000 hour(s)	<b>Operating and Electrical</b>	
Switching Cycle	50,000	Line Frequency	40000-110000 Hz
Lighting Technology	LED	Input Frequency	40000-110000 Hz
<b>Light Technical</b>		Power Consumption	11 W
Color Code	840 [CCT of 4000K]	Lamp Current (Max)	400 mA
Beam Angle (Nom)	200 degree(s)	Lamp Current (Min)	60 mA
Luminous Flux	1,500 lm	Wattage Equivalent	21 W
Color Designation	Cool White (CW)	Starting Time (Nom)	0.5 s
Luminous Efficacy (rated) (Nom)	136.00 lm/W	Warm-up time to 60% light	0.5 s
Correlated Color Temperature (Nom)	4000 K	Power Factor (Fraction)	0.9
Color Consistency	<6	Voltage (Nom)	50-80 V
Color rendering index (CRI)	82	UL Type	UL Type A

# InstantFit (UL Type-A) T5

<b>Temperature</b>	
Ambient temperature range	-20 °C to 45 °C
T-Case Maximum (Nom)	70 °C
<b>Controls and Dimming</b>	
Dimmable	Yes
<b>Mechanical and Housing</b>	
Bulb Finish	Frosted
Bulb Material	Glass
Product Length	900 mm
Bulb Shape	T5
<b>Approval and Application</b>	
Energy Saving Product	Yes
Approval Marks	UL certificate RoHS compliance
Energy Consumption kWh/1000 h	- kWh

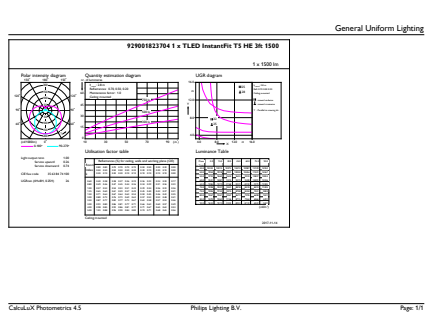
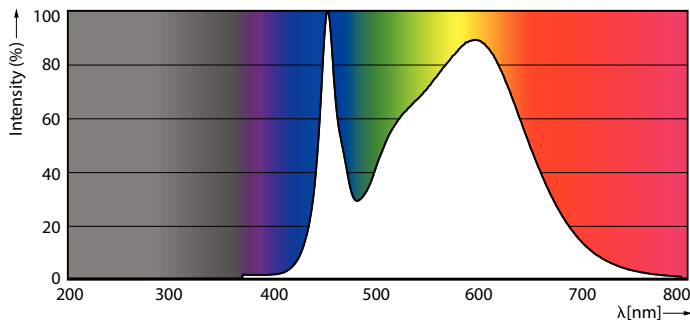
EU RoHS compliant	Yes
<b>Application Conditions</b>	
can it be used in closed luminaires	Yes
<b>Product Data</b>	
Order product name	11T5HE/34-840/IF15/G/DIM 10/1
Full product name	11T5HE/34-840/IF15/G/DIM 10/1
Order code	476473
Material Nr. (12NC)	929001823704
Numerator - Quantity Per Pack	1
Net Weight (Piece)	0.110 kg
EAN/UPC - Product/Case	046677476472
Numerator - Packs per outer box	10
EAN/UPC - Case	50046677476477

## Dimensional drawing



Product	D1	D2	A1	A2	A3
11T5HE/34-840/IF15/G/DIM 10/1	15.3 mm	18.4 mm	847.8 mm	854.9 mm	862 mm

## Photometric data

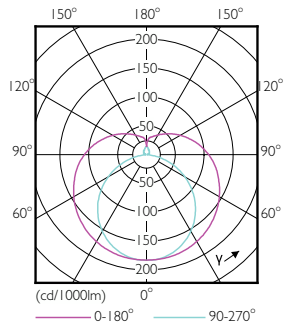


Spectral Power Distribution Colour - 11T5HE/34-840/IF15/G/DIM 10/1

General uniform lighting - 11T5HE/34-840/IF15/G/DIM 10/1

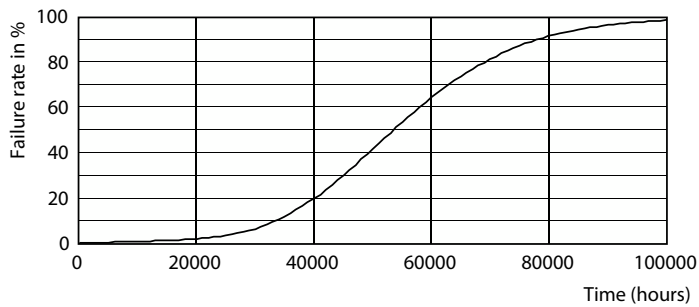
# InstantFit (UL Type-A) T5

## Photometric data

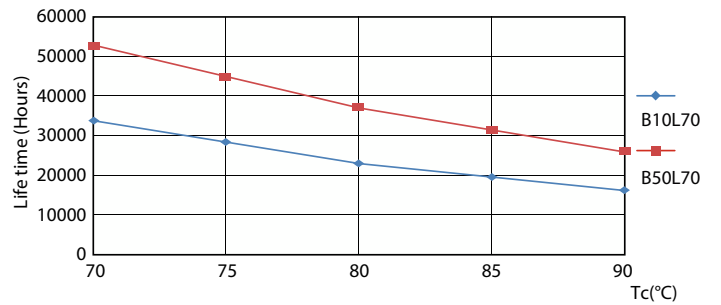


Light Distribution Diagram - 11T5HE/34-840/IF15/G/DIM 10/1

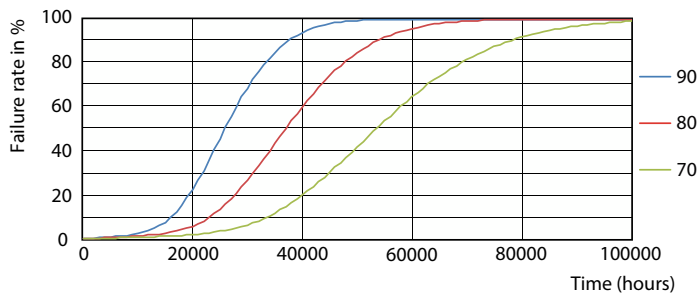
## Lifetime



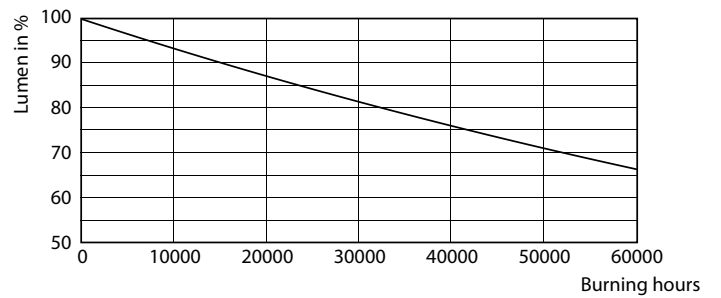
LEDtube 8-14W G5 830-850 200D DIM IF10-21



LEDtube 8-14W G5 830-850 200D DIM IF10-21



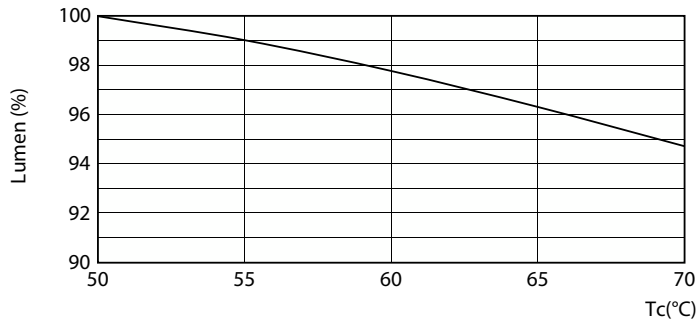
LEDtube 8-14W G5 830-850 200D DIM IF10-21



Lumen Maintenance Diagram - 11T5HE/34-840/IF15/G/DIM 10/1

## InstantFit (UL Type-A) T5

### Lifetime



Lumen Maintenance Diagram - 11T5HE/34-840/IF15/G/DIM 10/1

