



PL-C/T

5.5PL-C/LED/13H/830/IF5/P/4P 20/1

Philips PLED 4-pin & 2-pin lamps are an affordable LED solution to replace compact fluorescent lamps. The product provides a natural lighting effect for use in many lighting applications, and provides instant energy savings, making them an environmentally-friendly solution. Available as replacements for 13W, 26W and 32W compact fluorescent lamps.

Product data

General Information		Lamp Current (Min)	
Cap-Base	G24q		130 mA
Nominal lifetime	50,000 hour(s)	Wattage Equivalent	13 W
Switching Cycle	50,000	Starting Time (Nom)	0.5 s
Lighting Technology	LED	Warm-up time to 60% light	0.5 s
		Power Factor (Fraction)	0.9
		Voltage (Nom)	14-60 V
		UL Type	UL Type A
Light Technical		Temperature	
Color Code	830 [CCT of 3000K]	Ambient temperature range	-20 °C to 45 °C
Beam Angle (Nom)	150 degree(s)	T-Case Maximum (Nom)	75 °C
Luminous Flux	550 lm		
Color Designation	White (WH)	Controls and Dimming	
Luminous Efficacy (rated) (Nom)	100.00 lm/W	Dimmable	Yes
Correlated Color Temperature (Nom)	3000 K		
Color Consistency	<6	Mechanical and Housing	
Color rendering index (CRI)	82	Bulb Finish	Frosted
LLMF At End Of Nominal Lifetime (Nom)	70 %	Bulb Material	Plastic
		Product Length	140 mm
		Bulb Shape	PL-C
Operating and Electrical			
Line Frequency	25000-100000 Hz		
Input Frequency	25000-100000 Hz		
Power Consumption	5.5 W		
Lamp Current (Max)	280 mA		

PL-C/T

Approval and Application

Energy Saving Product	Yes
Approval Marks	RoHS compliance UL certificate
Energy Consumption kWh/1000 h	- kWh
EU RoHS compliant	Yes

Application Conditions

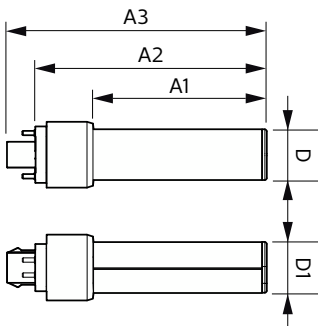
can it be used in closed luminaires	Yes
-------------------------------------	-----

Product Data

Order product name	5.5PL-C/LED/13H/830/IF5/P/4P 20/1
--------------------	-----------------------------------

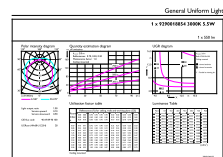
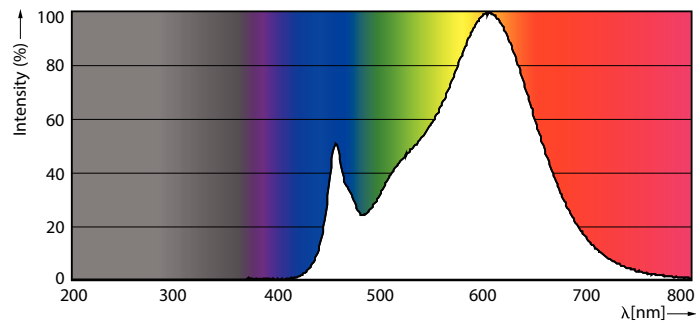
Full product name	5.5PL-C/LED/13H/830/IF5/P/4P 20/1
Order code	532408
Material Nr. (12NC)	929001885404
Numerator - Quantity Per Pack	1
Net Weight (Piece)	0.060 kg
EAN/UPC - Product/Case	046677532406
Numerator - Packs per outer box	20
EAN/UPC - Case	50046677532401

Dimensional drawing



Product	D	D1	A1	A2	A3
5.5PL-C/LED/13H/830/IF5/P/4P 20/1	27 mm	27 mm	91.5 mm	122.4 mm	137.4 mm

Photometric data

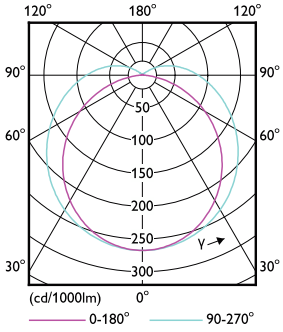


© 2023 Philips Lighting B.V. Philips Lighting B.V. Page 1/1

Spectral Power Distribution Colour - 5.5PL-C/LED/13H/830/IF5/P/4P 20/1

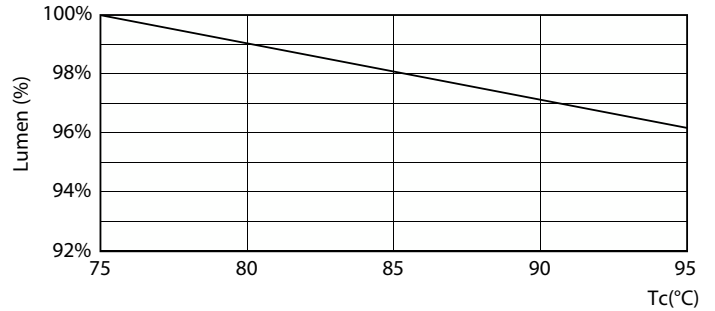
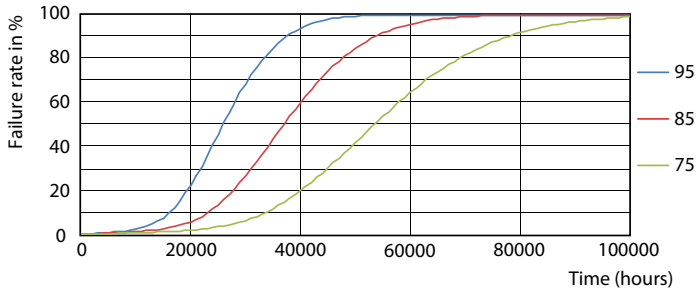
General uniform lighting - 5.5PL-C/LED/13H/830/IF5/P/4P 20/1

Photometric data



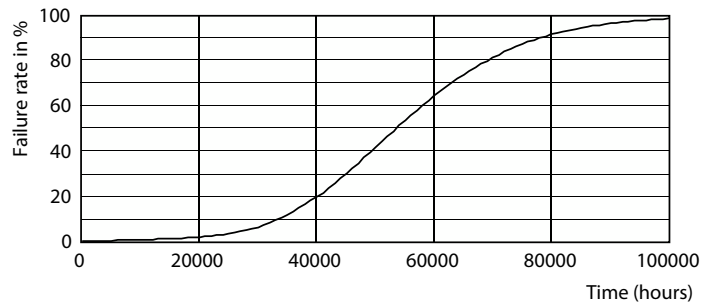
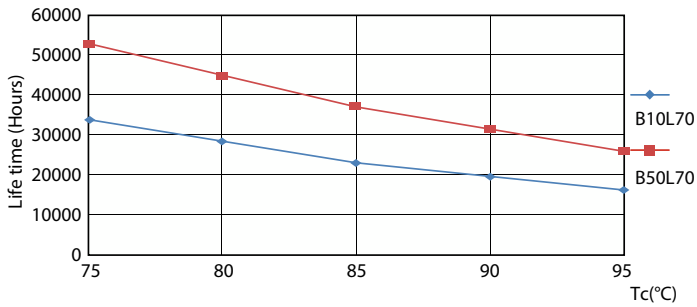
Light Distribution Diagram - 5.5PL-C/LED/13H/830/IF5/P/4P 20/1

Lifetime



LEDtube PLC 13H 5.5W G24Q 827 15D ND

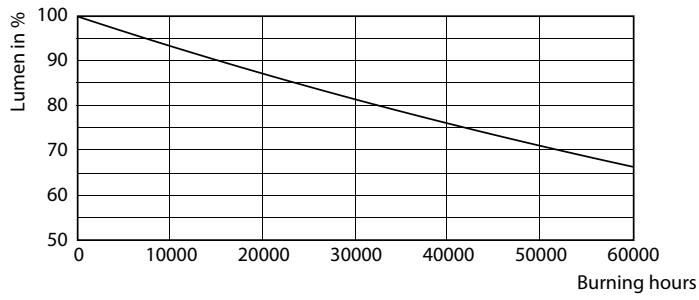
Lumen Maintenance Diagram - 5.5PL-C/LED/13H/830/IF5/P/4P 20/1



LEDtube PLC 13H 5.5W G24Q 827 15D ND

LEDtube PLC 13H 5W GX23-2 827 15D ND

Lifetime



Lumen Maintenance Diagram - 5.5PL-C/LED/13H/830/IF5/P/4P 20/1

