



# PL-C/T

## 5.5PL-C/LED/13H/840/IF5/P/4P 20/1

Philips PLED 4-pin & 2-pin lamps are an affordable LED solution to replace compact fluorescent lamps. The product provides a natural lighting effect for use in many lighting applications, and provides instant energy savings, making them an environmentally-friendly solution. Available as replacements for 13W, 26W and 32W compact fluorescent lamps.

### Product data

General Information		Lamp Current (Min)	
Cap-Base	G24q		130 mA
Nominal lifetime	50,000 hour(s)	Wattage Equivalent	13 W
Switching Cycle	50,000	Starting Time (Nom)	0.5 s
Lighting Technology	LED	Warm-up time to 60% light	0.5 s
		Power Factor (Fraction)	0.9
		Voltage (Nom)	14-60 V
		UL Type	UL Type A
Light Technical		Temperature	
Color Code	840 [CCT of 4000K]	Ambient temperature range	-20 °C to 45 °C
Beam Angle (Nom)	150 degree(s)	T-Case Maximum (Nom)	75 °C
Luminous Flux	580 lm		
Luminous Efficacy (rated) (Nom)	105.00 lm/W	Controls and Dimming	
Color Designation	Cool White (CW)	Dimmable	Yes
Correlated Color Temperature (Nom)	4000 K		
Color Consistency	<6	Mechanical and Housing	
Color rendering index (CRI)	82	Bulb Finish	Frosted
LLMF At End Of Nominal Lifetime (Nom)	70 %	Bulb Material	Plastic
		Product Length	140 mm
		Bulb Shape	PL-C
Operating and Electrical			
Line Frequency	25000-100000 Hz		
Input Frequency	25000-100000 Hz		
Power Consumption	5.5 W		
Lamp Current (Max)	280 mA		

# PL-C/T

## Approval and Application

Energy Saving Product	Yes
Approval Marks	RoHS compliance UL certificate
Energy Consumption kWh/1000 h	- kWh
EU RoHS compliant	Yes

## Application Conditions

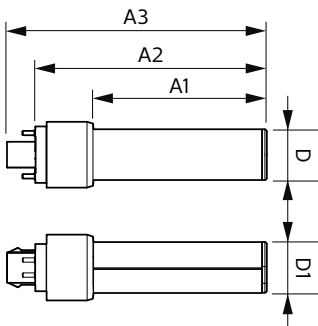
can it be used in closed luminaires	Yes
-------------------------------------	-----

## Product Data

Order product name	5.5PL-C/LED/13H/840/IF5/P/4P 20/1
--------------------	-----------------------------------

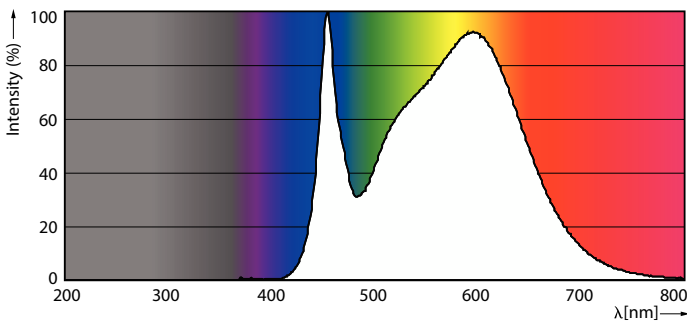
Full product name	5.5PL-C/LED/13H/840/IF5/P/4P 20/1
Order code	532424
Material Nr. (12NC)	929001885604
Numerator - Quantity Per Pack	1
Net Weight (Piece)	0.064 kg
EAN/UPC - Product/Case	046677532420
Numerator - Packs per outer box	20
EAN/UPC - Case	50046677532425

## Dimensional drawing

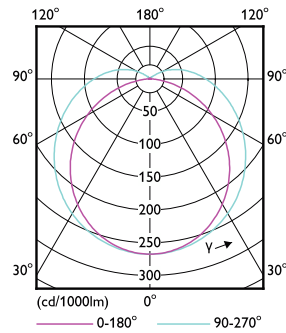


Product	D	D1	A1	A2	A3
5.5PL-C/LED/13H/840/IF5/P/4P 20/1	27 mm	27 mm	91.5 mm	122.4 mm	137.4 mm

## Photometric data

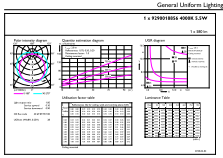


Spectral Power Distribution Colour - 5.5PL-C/LED/13H/840/IF5/P/4P 20/1



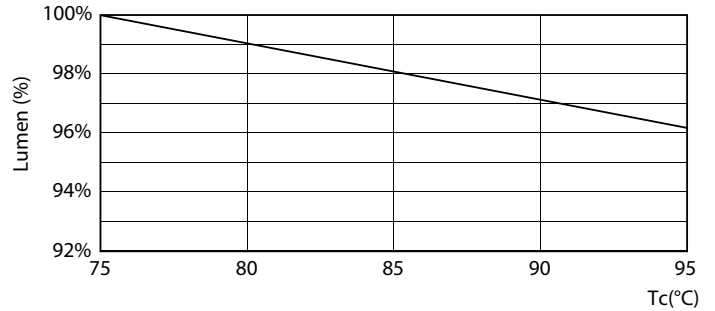
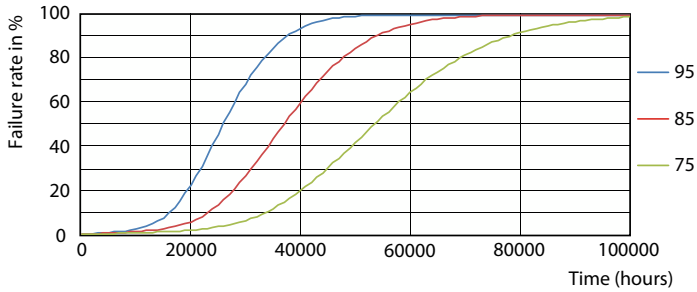
Light Distribution Diagram - 5.5PL-C/LED/13H/840/IF5/P/4P 20/1

Photometric data



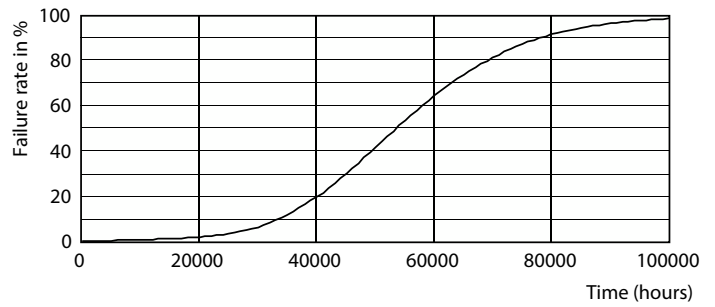
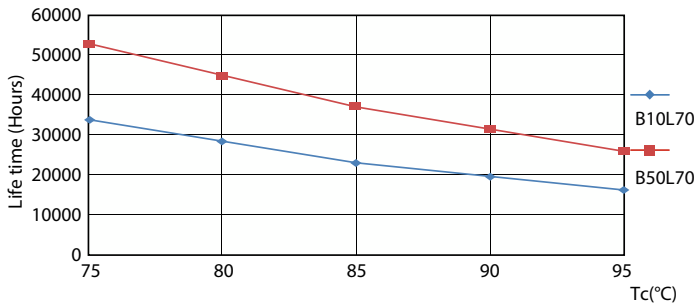
General uniform lighting - 5.5PL-C/LED/13H/840/IF5/P/4P 20/1

Lifetime



LEDtube PLC 13H 5.5W G24Q 827 15D ND

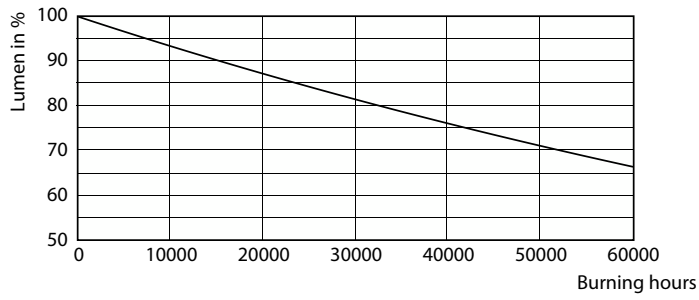
Lumen Maintenance Diagram - 5.5PL-C/LED/13H/840/IF5/P/4P 20/1



LEDtube PLC 13H 5.5W G24Q 827 15D ND

LEDtube PLC 13H 5W GX23-2 827 15D ND

Lifetime



Lumen Maintenance Diagram - 5.5PL-C/LED/13H/840/IF5/P/4P 20/1

