



PL-C/T

5.5PL-C/LED/13V/840/IF5/P/4P 20/1

Philips PLED 4-pin & 2-pin lamps are an affordable LED solution to replace compact fluorescent lamps. The product provides a natural lighting effect for use in many lighting applications, and provides instant energy savings, making them an environmentally-friendly solution. Available as replacements for 13W, 26W and 32W compact fluorescent lamps.

Product data

General Information	
Cap-Base	G24q
Nominal lifetime	50,000 hour(s)
Switching Cycle	50,000
Lighting Technology	LED
Light Technical	
Color Code	840 [CCT of 4000K]
Beam Angle (Nom)	150 degree(s)
Luminous Flux	580 lm
Color Designation	Cool White (CW)
Luminous Efficacy (rated) (Nom)	105.00 lm/W
Correlated Color Temperature (Nom)	4000 K
Color Consistency	<6
Color rendering index (CRI)	82
LLMF At End Of Nominal Lifetime (Nom)	70 %
Operating and Electrical	
Line Frequency	25000-100000 Hz
Input Frequency	25000-100000 Hz
Power Consumption	5.5 W
Lamp Current (Max)	280 mA

Lamp Current (Min)	130 mA
Wattage Equivalent	13 W
Starting Time (Nom)	0.5 s
Warm-up time to 60% light	0.5 s
Power Factor (Fraction)	0.9
Voltage (Nom)	14-60 V
UL Type	UL Type A

Temperature	
Ambient temperature range	-20 °C to 45 °C
T-Case Maximum (Nom)	70 °C

Controls and Dimming	
Dimmable	Yes

Mechanical and Housing	
Bulb Finish	Frosted
Bulb Material	Plastic
Product Length	100 mm
Bulb Shape	PL-C

PL-C/T

Approval and Application

Energy Saving Product	Yes
Approval Marks	RoHS compliance UL certificate
Energy Consumption kWh/1000 h	- kWh
EU RoHS compliant	Yes

Application Conditions

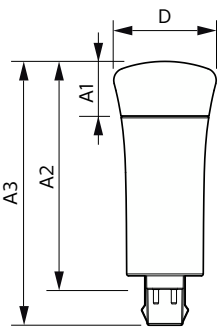
can it be used in closed luminaires	Yes
-------------------------------------	-----

Product Data

Order product name	5.5PL-C/LED/13V/840/IF5/P/4P 20/1
--------------------	-----------------------------------

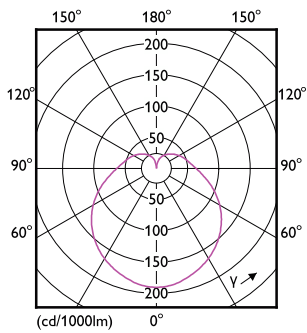
Full product name	5.5PL-C/LED/13V/840/IF5/P/4P 20/1
Order code	532465
Material Nr. (12NC)	929001886004
Numerator - Quantity Per Pack	1
Net Weight (Piece)	0.058 kg
EAN/UPC - Product/Case	046677532468
Numerator - Packs per outer box	20
EAN/UPC - Case	50046677532463

Dimensional drawing

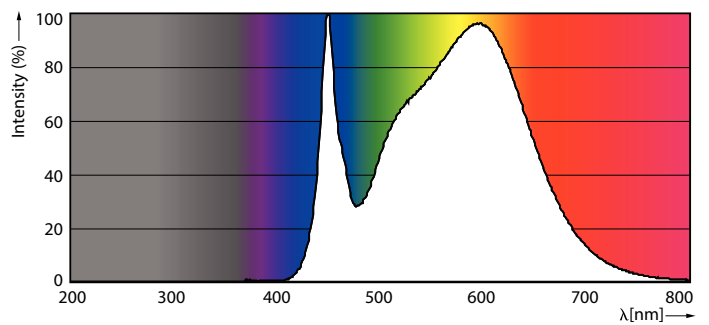


Product	D	A1	A2	A3
5.5PL-C/LED/13V/840/IF5/P/4P 20/1	45.7 mm	24.6 mm	101.6 mm	117.6 mm

Photometric data

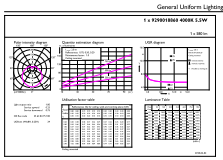


Light Distribution Diagram - 5.5PL-C/LED/13V/840/IF5/P/4P 20/1



Spectral Power Distribution Colour - 5.5PL-C/LED/13V/840/IF5/P/4P 20/1

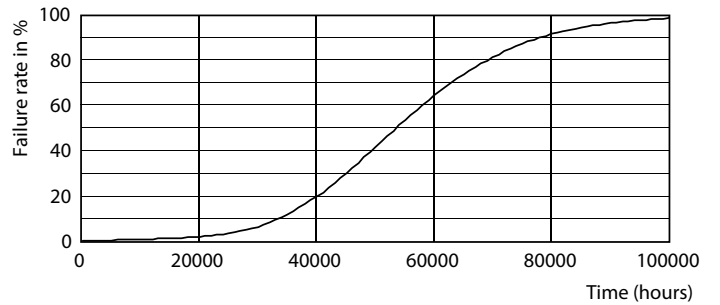
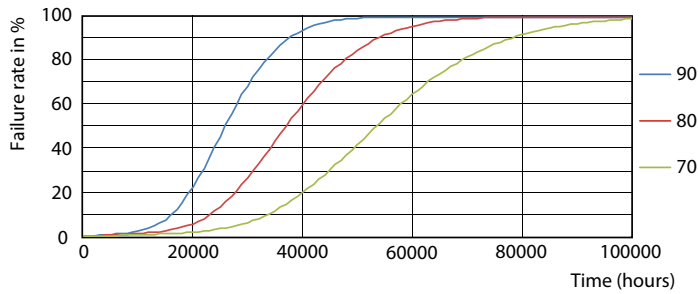
Photometric data



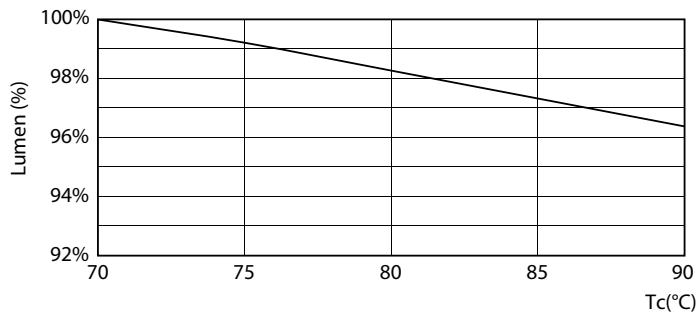
© 2023 Philips Lighting B.V. Page 10/11

General uniform lighting - 5.5PL-C/LED/13V/840/IF5/P/4P 20/1

Lifetime

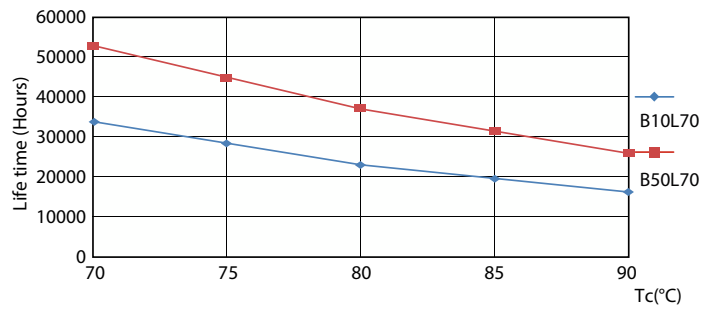


LEDtube PLC 13H 5W GX23-2 827 15D ND



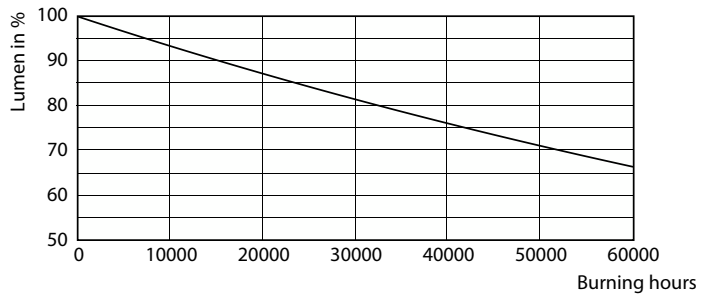
Lumen Maintenance Diagram - 5.5PL-C/LED/13V/840/IF5/P/4P 20/1

LEDtube PLC 13H 5W GX23-2 827 15D ND



LEDtube PLC 13H 5W GX23-2 827 15D ND

Lifetime



Lumen Maintenance Diagram - 5.5PL-C/LED/13V/840/IF5/P/4P 20/1

