



CorePro MainsFit (UL Type-B) T8

11.5T8/COR/36-840/MF14/G 10/1

The CorePro MainsFit (UL Type B) lamps are designed to be the perfect retrofit solution to move from traditional fluorescent lamps to energy saving LEDs. This ballast bypass lamp has everything needed built into the lamp with proven energy savings, long life (up to 50k hours), surge suppression and industry leading safety features. All lamps in the CorePro MainsFit family are double-ended to help simplify the installation. In addition, all lamps meet the Philips standards for light quality so that end users will be in a comfortable environment regardless of the CorePro MainsFit lamp type.

Product data

General Information		Operating and Electrical	
Cap-Base	G13 [Medium Bi-Pin Fluorescent]	Line Frequency	50 to 60 Hz
Nominal lifetime	50,000 hour(s)	Input Frequency	50 to 60 Hz
Switching Cycle	50,000	Power Consumption	11.5 W
Lighting Technology	LED	Lamp Current (Max)	101 mA
Light Technical		Lamp Current (Min)	47 mA
Color Code	840 [CCT of 4000K]	Wattage Equivalent	25 W
Beam Angle (Nom)	180 degree(s)	Starting Time (Nom)	0.9 s
Luminous Flux	1,400 lm	Warm-up time to 60% light	0.9 s
Color Designation	Cool White (CW)	Power Factor (Fraction)	0.9
Luminous Efficacy (rated) (Nom)	121.00 lm/W	Voltage (Nom)	120-277 V
Correlated Color Temperature (Nom)	4000 K	UL Type	UL Type B
Color Consistency	<6	Temperature	
Color rendering index (CRI)	82	Ambient temperature range	-20 °C to 45 °C
LLMF At End Of Nominal Lifetime (Nom)	70 %	T-Case Maximum (Nom)	50 °C

CorePro MainsFit (UL Type-B) T8

Controls and Dimming

Dimmable	No
----------	----

Mechanical and Housing

Bulb Finish	Frosted
Bulb Material	Glass
Product Length	900 mm
Bulb Shape	T8

Approval and Application

Energy Saving Product	Yes
Approval Marks	UL certificate RoHS compliance DLC compliance
Energy Consumption kWh/1000 h	- kWh
Energy Certifications	DLC Standard
EU RoHS compliant	Yes

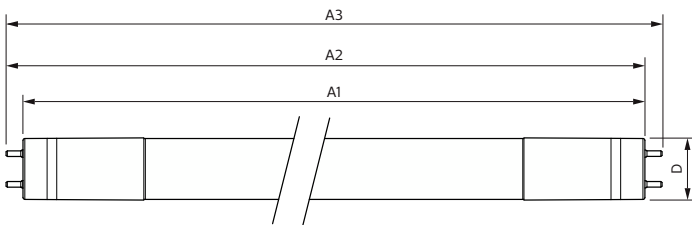
Application Conditions

can it be used in closed luminaires	Yes
-------------------------------------	-----

Product Data

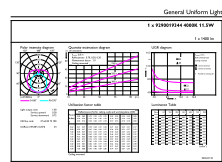
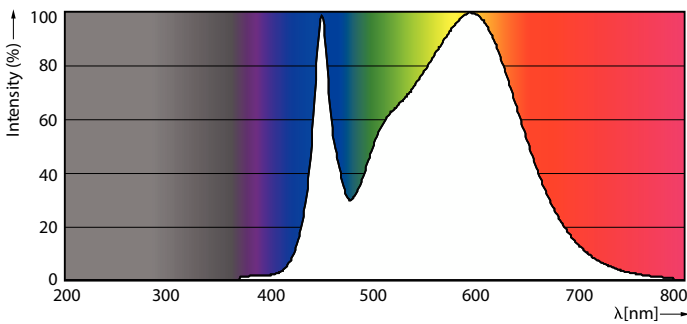
Order product name	11.5T8/COR/36-840/MF14/G 10/1
Full product name	11.5T8/COR/36-840/MF14/G 10/1
Order code	535518
Material Nr. (12NC)	929001934404
Numerator - Quantity Per Pack	1
Net Weight (Piece)	0.250 kg
EAN/UPC - Product/Case	046677535513
Numerator - Packs per outer box	10
EAN/UPC - Case	50046677535518

Dimensional drawing



Product	D	A1	A2	A3
11.5T8/COR/36-840/MF14/G 10/1	25.9 mm	894.3 mm	900.5 mm	908.8 mm

Photometric data

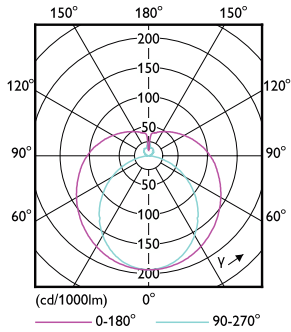


Spectral Power Distribution Colour - 11.5T8/COR/36-840/MF14/G 10/1

General uniform lighting - 11.5T8/COR/36-840/MF14/G 10/1

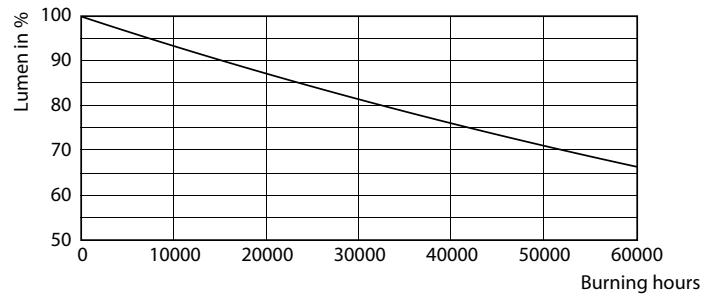
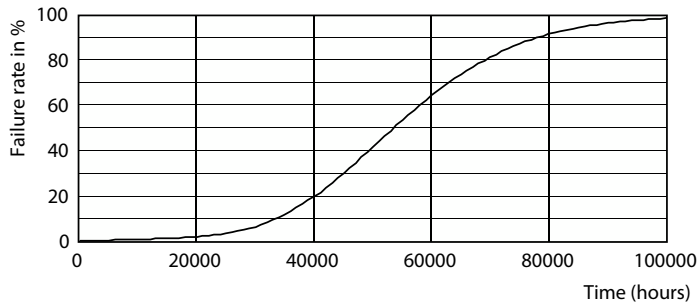
CorePro MainsFit (UL Type-B) T8

Photometric data



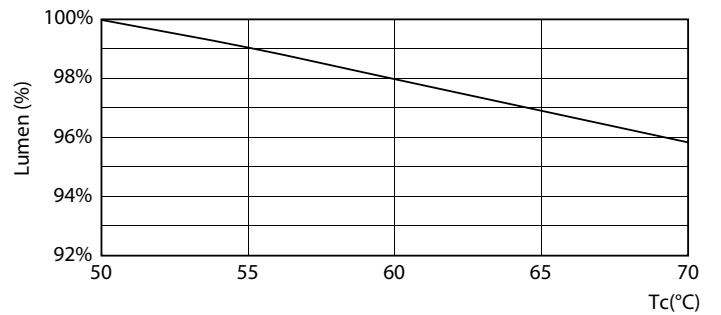
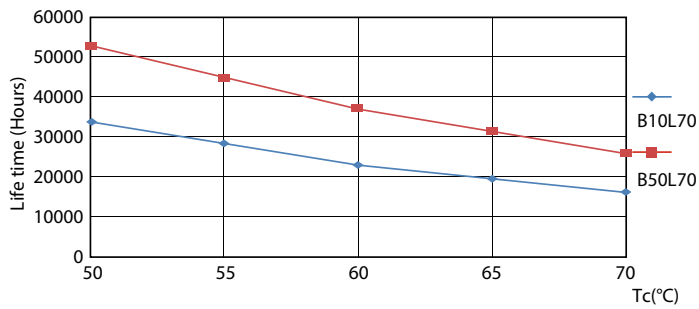
Light Distribution Diagram - 11.5T8/COR/36-840/MF14/G 10/1

Lifetime



8.5W G13

Lumen Maintenance Diagram - 11.5T8/COR/36-840/MF14/G 10/1

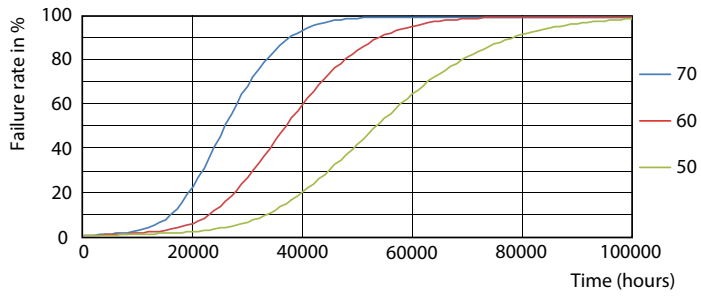


8.5W G13

Lumen Maintenance Diagram - 11.5T8/COR/36-840/MF14/G 10/1

CorePro MainsFit (UL Type-B) T8

Lifetime



8.5W G13

