



# MasterClass InstantFit (UL Type- A) T8

## 8.5T8/MAS/36-835/IF13/P/DIM 10/1

The MasterClass InstantFit T8 lamps provide hassle-free installation with simple lamp-for-lamp replacements. They deliver what we promise, with at least 40% energy savings, flicker-free performance, and the life you would expect. Other lamps claim compatibility but only MasterClass InstantFit (UL Type A) has been proven to work with over 200 ballasts and drivers, delivering even light output, with proven energy savings and a long average lifetime. End users will be delighted being under these comfortable and high quality lamps with no visible flicker and optimized optics. Energy managers will enjoy these lamps too as they can count the savings delivered by our lamps. To enjoy more energy savings, the MasterClass InstantFit lamps can be paired with the Advance TLED drivers to create a Type C system. With available 70,000 hour life, 7-year limited warranty and a shatter-prevention polycarbonate lens, Philips MasterClass InstantFit TLED lamps deliver benefits for all.

### Product data

General Information		Light Technical	
Cap-Base	G13 [Medium Bi-Pin Fluorescent]	Luminous Flux	1,350 lm
Nominal lifetime	70,000 hour(s)	Luminous Efficacy (rated) (Nom)	158 lm/W
Switching Cycle	50,000	Color Designation	White (WH)
Lighting Technology	LED	Correlated Color Temperature (Nom)	3500 K
		Color Consistency	<6
		Color rendering index (CRI)	80
		LLMF At End Of Nominal Lifetime (Nom)	70 %
Color Code	835 [CCT of 3500K]		
Beam Angle (Nom)	180 degree(s)		

# MasterClass InstantFit (UL Type-A) T8

## Operating and Electrical

Line Frequency	20K to 120K Hz
Input Frequency	20K to 120K Hz
Power Consumption	8.5 W
Lamp Current (Max)	280 mA
Lamp Current (Min)	50 mA
Wattage Equivalent	25 W
Starting Time (Nom)	0.5 s
Warm-up time to 60% light	0.5 s
Power Factor (Fraction)	0.9
Voltage (Nom)	120-277,347 V
UL Type	UL Type A

## Temperature

Ambient temperature range	-20 °C to 45 °C
T-Case Maximum (Nom)	40 °C

## Controls and Dimming

Dimmable	Only with specific dimmers
----------	----------------------------

## Mechanical and Housing

Bulb Finish	Frosted
Bulb Material	Plastic
Product Length	900 mm
Bulb Shape	T8

## Approval and Application

Energy Saving Product	Yes
Approval Marks	RoHS compliance UL certificate DLC compliance
Energy Consumption kWh/1000 h	- kWh
Energy Certifications	DLC Standard
EU RoHS compliant	Yes

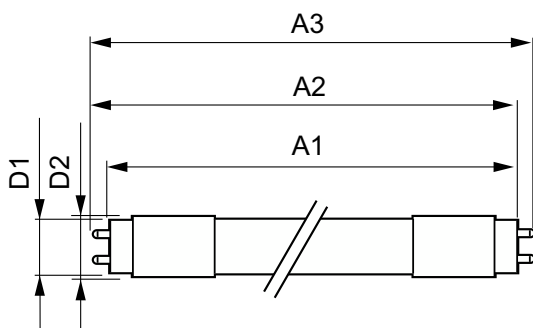
## Application Conditions

can it be used in closed luminaires	Yes
-------------------------------------	-----

## Product Data

Order product name	8.5T8/MAS/36-835/IF13/P/DIM 10/1
Full product name	8.5T8/MAS/36-835/IF13/P/DIM 10/1
Order code	539866
Material Nr. (12NC)	929001967904
Numerator - Quantity Per Pack	1
Net Weight (Piece)	0.130 kg
EAN/UPC - Product/Case	046677539863
Numerator - Packs per outer box	10
EAN/UPC - Case	50046677539868

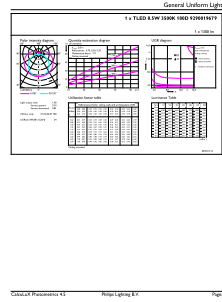
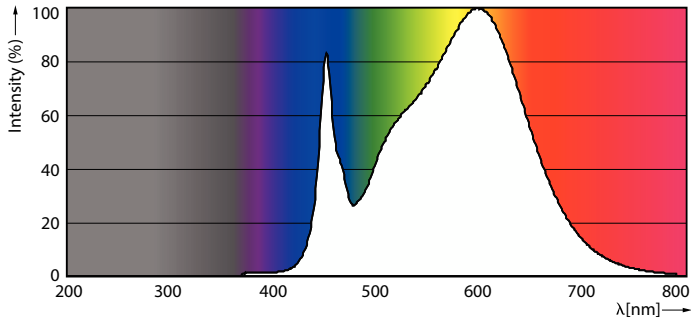
## Dimensional drawing



Product	D1	D2	A1	A2	A3
8.5T8/MAS/36-835/IF13/P/DIM 10/1	25.7 mm	26.3 mm	893.4 mm	900.5 mm	907.6 mm

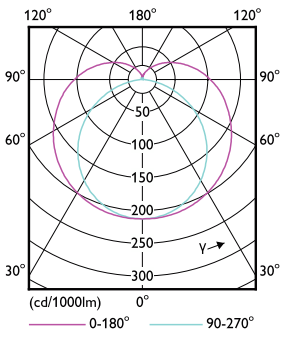
# MasterClass InstantFit (UL Type-A) T8

## Photometric data



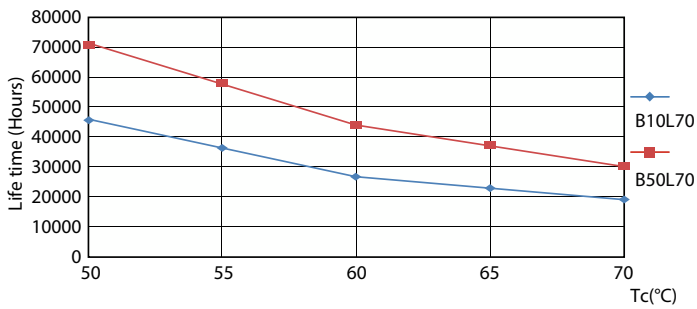
Spectral Power Distribution Colour - 8.5T8/MAS/36-835/IF13/P/DIM 10/1

General uniform lighting - 8.5T8/MAS/36-835/IF13/P/DIM 10/1

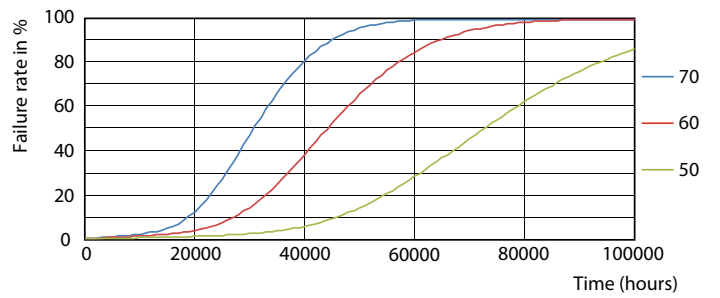


Light Distribution Diagram - 8.5T8/MAS/36-835/IF13/P/DIM 10/1

## Lifetime



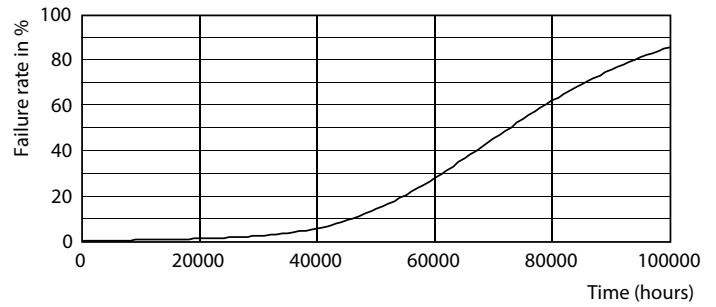
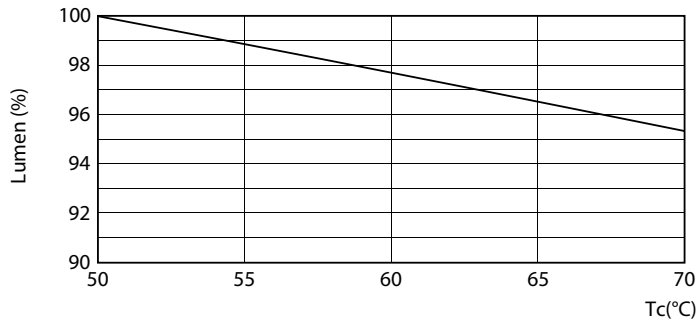
G13 4000K



G13 4000K

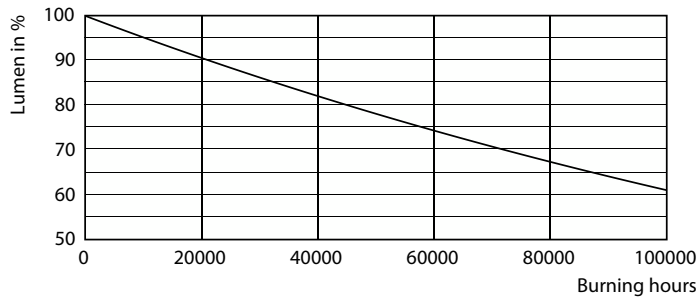
# MasterClass InstantFit (UL Type-A) T8

## Lifetime



Lumen Maintenance Diagram - 8.5T8/MAS/36-835/IF13/P/DIM 10/1

G13 4000K



Lumen Maintenance Diagram - 8.5T8/MAS/36-835/IF13/P/DIM 10/1

