



InstantFit (UL Type-A) T5

24T5HO/COR/46-840/IF35/G/DIM 25/1

The InstantFit TLED lamps provide hassle-free installation with simple lamp-for-lamp replacements. They deliver what we promise, with at least 40% energy savings, flicker-free performance, and the life you would expect. Other lamps claim compatibility but only InstantFit (UL Type-A) has been proven to work with over 200 ballasts and drivers, delivering even light output, with proven energy savings and a long average lifetime. End users will be delighted being under these comfortable and high quality InstantFit lamps with no visible flicker and optimized optics. Energy managers will enjoy the InstantFit lamps too as they can count the savings delivered by our lamps. To enjoy more energy savings, the InstantFit lamps can be paired with the Advance TLED drivers to create a Type C system.

Product data

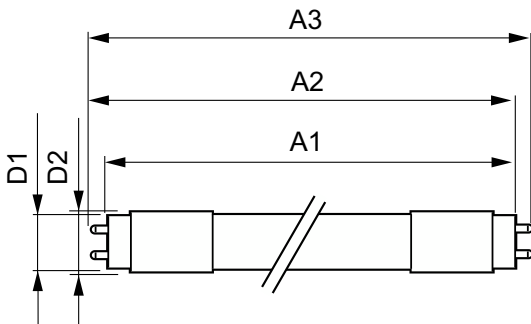
| General Information | | LLMF At End Of Nominal Lifetime (Nom) 70 % | |
|------------------------------------|--------------------|--|----------------|
| Cap-Base | G5 | | |
| Nominal lifetime | 50,000 hour(s) | | |
| Switching Cycle | 50,000 | | |
| Lighting Technology | LED | | |
| Light Technical | | Operating and Electrical | |
| Color Code | 840 [CCT of 4000K] | Line Frequency | 50 to 60 Hz |
| Beam Angle (Nom) | 200 degree(s) | Input Frequency | 50 to 60 Hz |
| Luminous Flux | 3,500 lm | Power Consumption | 24 W |
| Color Designation | Cool White (CW) | Lamp Current (Max) | 1,200 mA |
| Luminous Efficacy (rated) (Nom) | 145.00 lm/W | Lamp Current (Min) | 30 mA |
| Correlated Color Temperature (Nom) | 4000 K | Wattage Equivalent | 54 W |
| Color Consistency | <6 | Starting Time (Nom) | 0.5 s |
| Color rendering index (CRI) | 80 | Warm-up time to 60% light | 0.5 s |
| | | Power Factor (Fraction) | 0.9 |
| | | Voltage (Nom) | 120-277, 347 V |
| | | UL Type | UL Type A |

InstantFit (UL Type-A) T5

| Temperature | |
|---------------------------|---|
| Ambient temperature range | -20 °C to 45 °C |
| T-Case Maximum (Nom) | 70 °C |
| Controls and Dimming | |
| Dimmable | Only with specific dimmers |
| Mechanical and Housing | |
| Bulb Finish | Frosted |
| Bulb Material | Glass |
| Product Length | 1,200 mm |
| Bulb Shape | T5 |
| Approval and Application | |
| Energy Saving Product | Yes |
| Approval Marks | RoHS compliance UL certificate DLC compliance |

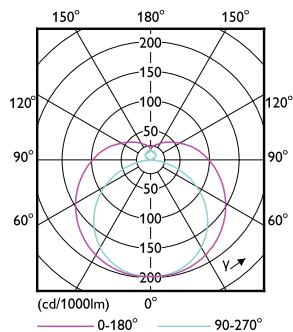
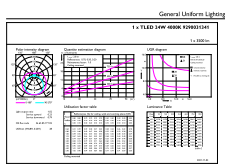
| EU RoHS compliant | Yes |
|-------------------------------------|-----------------------------------|
| Application Conditions | |
| can it be used in closed luminaires | Yes |
| Product Data | |
| Order product name | 24T5HO/COR/46-840/IF35/G/DIM 25/1 |
| Full product name | 24T5HO/COR/46-840/IF35/G/DIM 25/1 |
| Order code | 576736 |
| Material Nr. (12NC) | 929003134104 |
| Numerator - Quantity Per Pack | 1 |
| Net Weight (Piece) | 0.151 kg |
| EAN/UPC - Product/Case | 046677576738 |
| Numerator - Packs per outer box | 25 |
| EAN/UPC - Case | 50046677576733 |

Dimensional drawing



| Product | D1 | D2 | A1 | A2 | A3 |
|-----------------------------------|---------|---------|------------|------------|----------|
| 24T5HO/COR/46-840/IF35/G/DIM 25/1 | 15.3 mm | 18.4 mm | 1,147.8 mm | 1,154.9 mm | 1,162 mm |

Photometric data

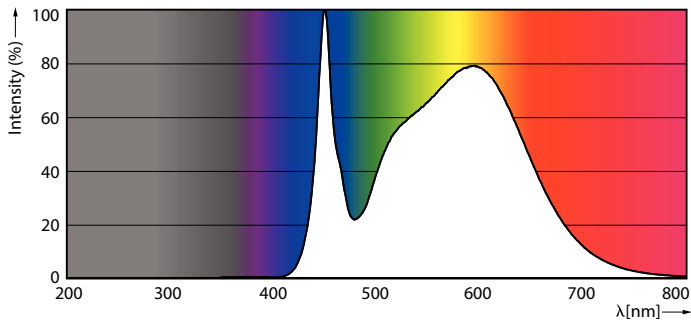


General uniform lighting - 24T5HO/COR/46-840/IF35/G/DIM 25/1

Light Distribution Diagram - 24T5HO/COR/46-840/IF35/G/DIM 25/1

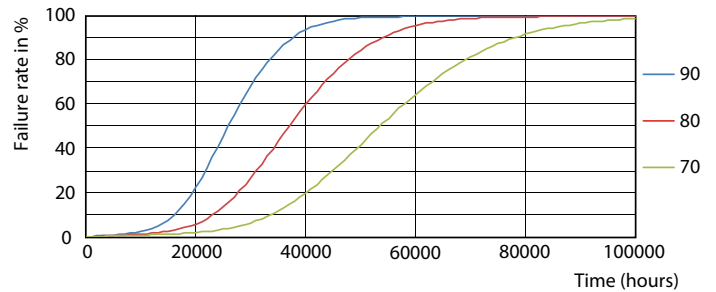
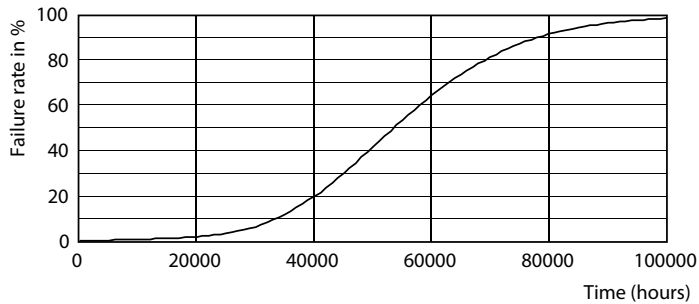
InstantFit (UL Type-A) T5

Photometric data

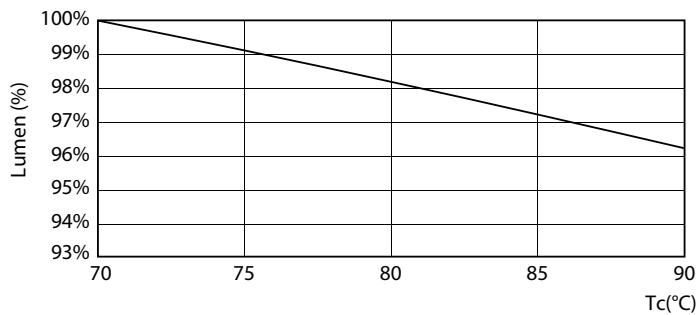


Spectral Power Distribution Colour - 24T5HO/COR/46-840/IF35/G/DIM 25/1

Lifetime

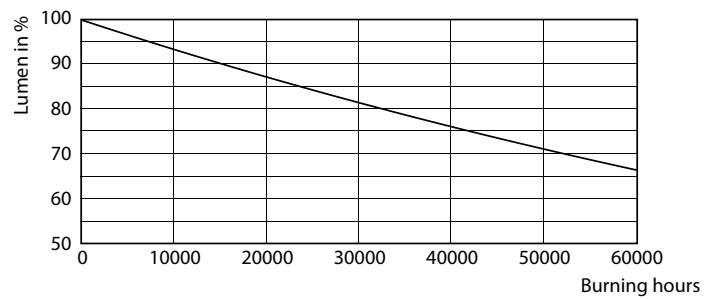


Life Expectancy Diagram



Lumen Maintenance Diagram - 24T5HO/COR/46-840/IF35/G/DIM 25/1

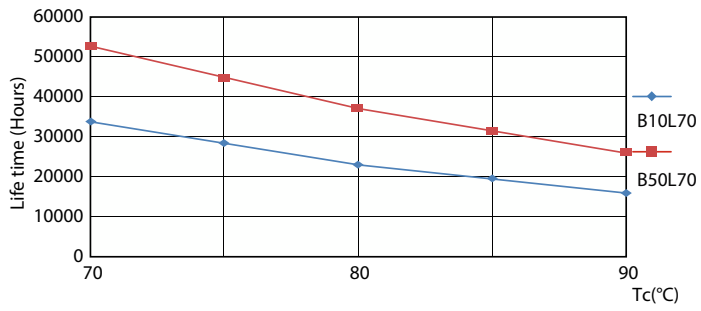
LEDtube 50K 7090 FailureRate-LED



Lumen Maintenance Diagram - 24T5HO/COR/46-840/IF35/G/DIM 25/1

InstantFit (UL Type-A) T5

Lifetime



LifetimeVsTc

