



Contractor-grade MainsFit (UL Type-B) T8

16.5T8/CNG/48-840/MF21/G 25/1

The Contractor-grade MainsFit (UL Type B) lamps are designed to provide simple retrofit solution to move from traditional fluorescent lamps to energy saving LEDs. This ballast bypass lamp is similar to other UL Type B lamps in the Philips family by providing proven energy savings, long life (50k hours), surge suppression and industry leading safety features. All lamps in the Contractor-grade family are also double-ended to help simplify the installation.

Product data

General Information		LLMF At End Of Nominal Lifetime (Nom) 70 %	
Cap-Base	G13 [Medium Bi-Pin Fluorescent]		
Nominal lifetime	50,000 hour(s)		
Switching Cycle	50,000		
Lighting Technology	LED		
Light Technical		Operating and Electrical	
Color Code	840 [CCT of 4000K]	Line Frequency	50 to 60 Hz
Beam Angle (Nom)	240 degree(s)	Input Frequency	50 to 60 Hz
Luminous Flux	2,100 lm	Power Consumption	16.5 W
Luminous Efficacy (rated) (Nom)	127.00 lm/W	Lamp Current (Max)	134 mA
Color Designation	Cool White (CW)	Lamp Current (Min)	58 mA
Correlated Color Temperature (Nom)	4000 K	Wattage Equivalent	32 W
Color Consistency	<6	Starting Time (Nom)	0.5 s
Color rendering index (CRI)	80	Warm-up time to 60% light	0.5 s
		Power Factor (Fraction)	0.9
		Voltage (Nom)	120-277 V
		UL Type	UL Type B

Contractor-grade MainsFit (UL Type-B) T8

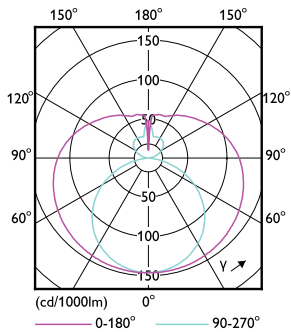
Temperature	
Ambient temperature range	-20 °C to 45 °C
T-Case Maximum (Nom)	70 °C
Controls and Dimming	
Dimmable	Limited
Mechanical and Housing	
Bulb Finish	Frosted
Bulb Material	Glass
Product Length	1,200 mm
Bulb Shape	T8
Approval and Application	
Energy Saving Product	Yes
Approval Marks	RoHS compliance UL certificate DLC compliance

EU RoHS compliant	Yes
Application Conditions	
can it be used in closed luminaires	Yes
Product Data	
Order product name	16.5T8/CNG/48-840/MF21/G 25/1
Full product name	16.5T8/CNG/48-840/MF21/G 25/1
Order code	579052
Material Nr. (12NC)	929003510704
Numerator - Quantity Per Pack	1
Net Weight (Piece)	0.190 kg
EAN/UPC - Product/Case	046677579050
Numerator - Packs per outer box	25
EAN/UPC - Case	50046677579055

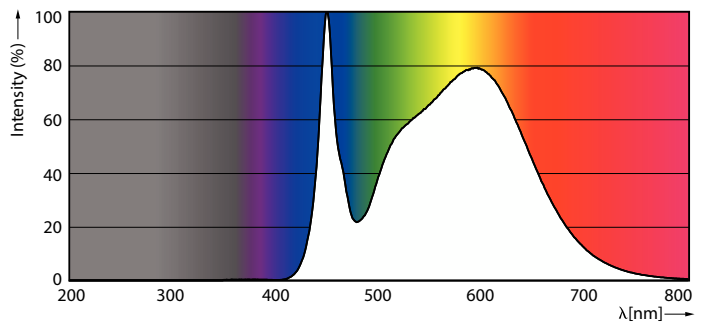
Dimensional drawing

Product	D1	D2	A1	A2	A3
16.5T8/CNG/48-840/MF21/G	25.7 mm	28 mm	1,198.2 mm	1,205.3 mm	1,212.4 mm
					25/1

Photometric data



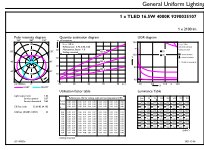
Light Distribution Diagram - 16.5T8/CNG/48-840/MF21/G 25/1



Spectral Power Distribution Colour - 16.5T8/CNG/48-840/MF21/G 25/1

Contractor-grade MainsFit (UL Type-B) T8

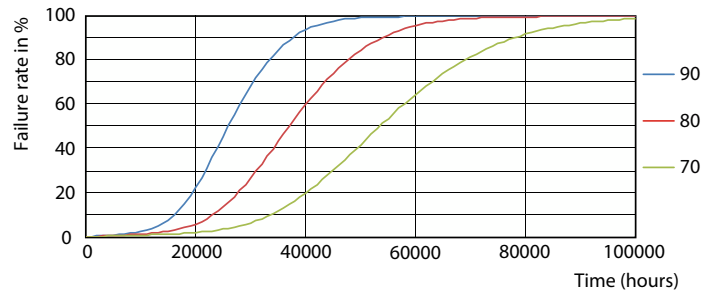
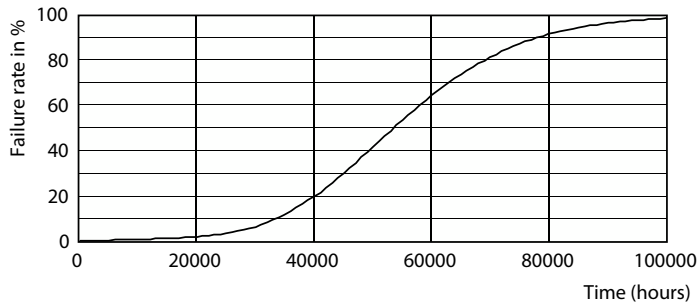
Photometric data



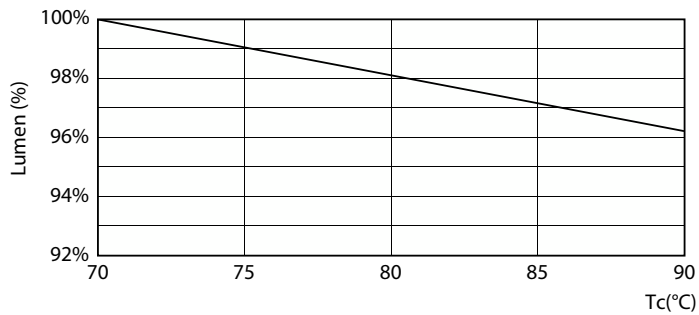
General Parameters 43
Photometry 44
Page 10

General uniform lighting - 16.5T8/CNG/48-840/MF21/G 25/1

Lifetime

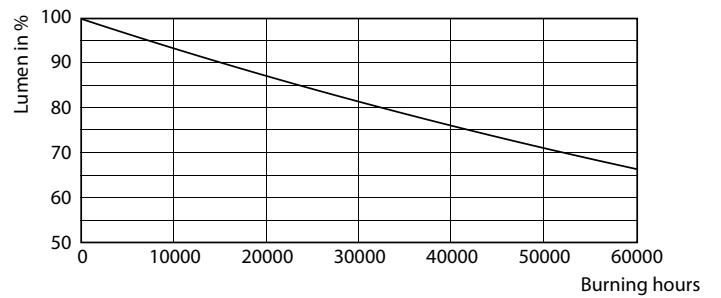


Life Expectancy Diagram



Lumen Maintenance Diagram - 16.5T8/CNG/48-840/MF21/G 25/1

LEDtube 50K 7090 FailureRate-LED



Lumen Maintenance Diagram - 16.5T8/CNG/48-840/MF21/G 25/1

Contractor-grade MainsFit (UL Type-B) T8

Lifetime



LifetimeVsTc

