



CorePro MainsFit (UL Type-B) T8

15T8/COR/48-850/MF21/G/120-347V 25/1

The CorePro MainsFit (UL Type B) lamps are designed to be the perfect retrofit solution to move from traditional fluorescent lamps to energy saving LEDs. This ballast bypass lamp has everything needed built into the lamp with proven energy savings, long life (up to 50k hours), surge suppression and industry leading safety features. All lamps in the CorePro MainsFit family are double-ended to help simplify the installation. In addition, all lamps meet the Philips standards for light quality so that end users will be in a comfortable environment regardless of the CorePro MainsFit lamp type.

Product data

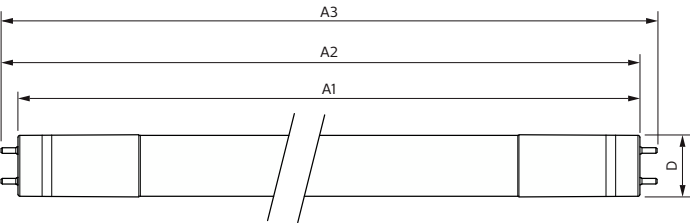
General Information		Operating and Electrical	
Cap-Base	G13 [Medium Bi-Pin Fluorescent]	Line Frequency	50 to 60 Hz
Nominal lifetime	50,000 hour(s)	Input Frequency	50 to 60 Hz
Switching Cycle	50,000	Power Consumption	15 W
Lighting Technology	LED	Lamp Current (Max)	145 mA
Light Technical		Lamp Current (Min)	50 mA
Color Code	850 [CCT of 5000K]	Starting Time (Nom)	0.5 s
Beam Angle (Nom)	240 degree(s)	Warm-up time to 60% light	0.5 s
Luminous Flux	2,100 lm	Power Factor (Fraction)	0.9
Luminous Efficacy (rated) (Nom)	140.00 lm/W	Voltage (Nom)	120-347 V
Color Designation	Daylight	UL Type	TLED_Type B; UL classified double end
Correlated Color Temperature (Nom)	5000 K	Temperature	
Color Consistency	<5	Ambient temperature range	-20 °C to 45 °C
Color rendering index (CRI)	80	T-Case Maximum (Nom)	70 °C
LLMF At End Of Nominal Lifetime (Nom)	70 %		

CorePro MainsFit (UL Type-B) T8

Controls and Dimming	
Dimmable	Limited
Mechanical and Housing	
Bulb Finish	Frosted
Bulb Material	Glass
Product Length	1,200 mm
Bulb Shape	T8
Approval and Application	
Energy Saving Product	Yes
Approval Marks	RoHS compliance UL certificate DLC compliance
EU RoHS compliant	Yes

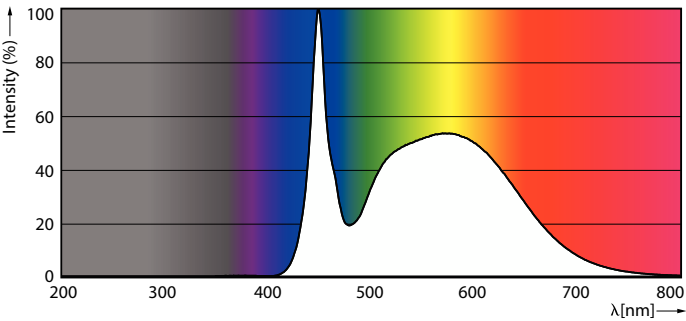
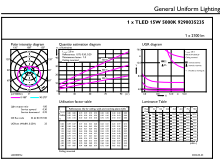
Application Conditions	
can it be used in closed luminaires	Yes
Product Data	
Order product name	15T8/COR/48-850/MF21/G/120-347V 25/1
Full product name	15T8/COR/48-850/MF21/G/120-347V 25/1
Order code	579300
Material Nr. (12NC)	929003523504
Numerator - Quantity Per Pack	1
Net Weight (Piece)	0.220 kg
EAN/UPC - Product/Case	046677579302
Numerator - Packs per outer box	25
EAN/UPC - Case	50046677579307

Dimensional drawing



Product	D1	D2	A1	A2	A3
15T8/COR/48-850/MF21/G/120-347V 25/1	25.7 mm	29 mm	1,198.2 mm	1,205.3 mm	1,212.4 mm

Photometric data

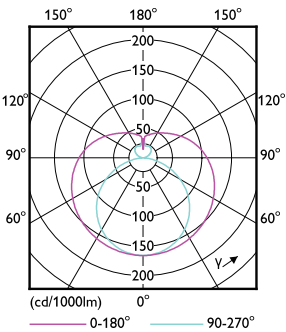


General uniform lighting - 15T8/COR/48-850/MF21/G/120-347V 25/1

Spectral Power Distribution Colour - 15T8/COR/48-850/MF21/G/120-347V 25/1

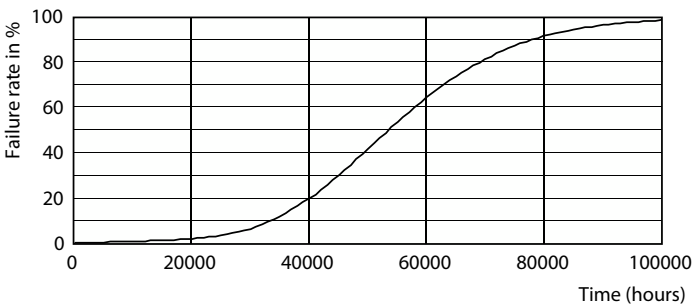
CorePro MainsFit (UL Type-B) T8

Photometric data

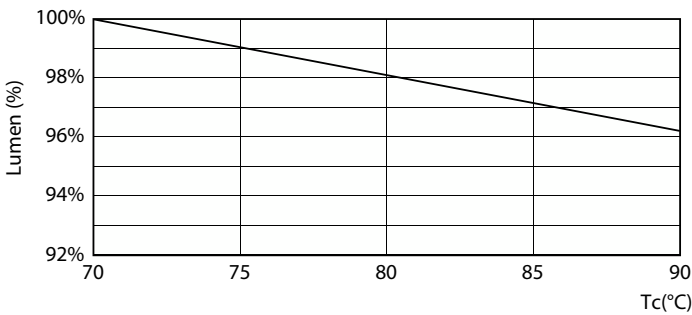


Light Distribution Diagram - 15T8/COR/48-850/MF21/G/120-347V 25/1

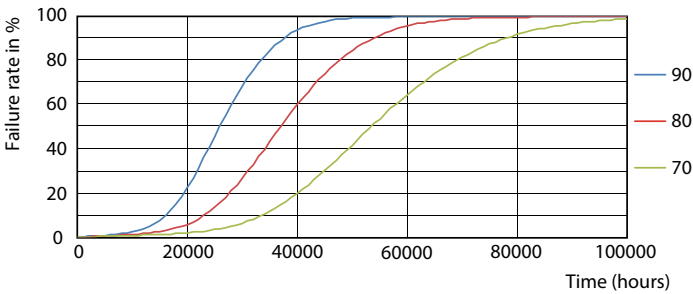
Lifetime



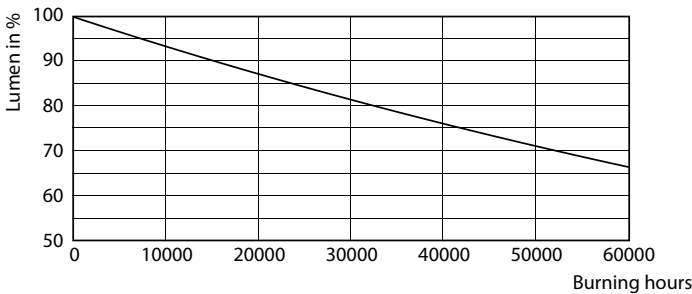
Life Expectancy Diagram



Lumen Maintenance Diagram - 15T8/COR/48-850/MF21/G/120-347V 25/1



LEDtube 50K 7090 FailureRate-LED



Lumen Maintenance Diagram - 15T8/COR/48-850/MF21/G/120-347V 25/1

CorePro MainsFit (UL Type-B) T8

Lifetime



LifetimeVsTc

