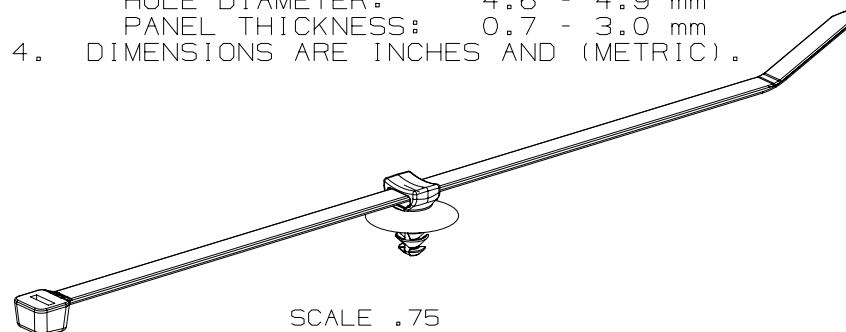
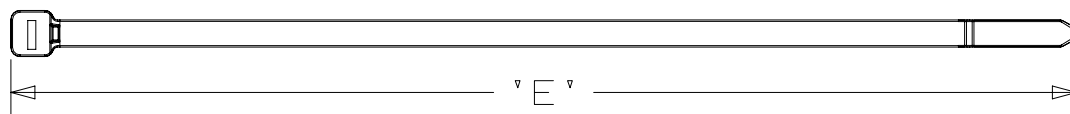
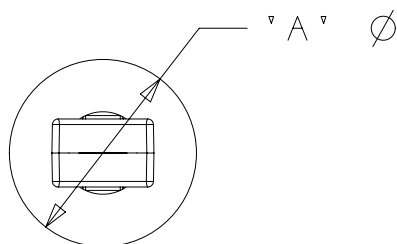
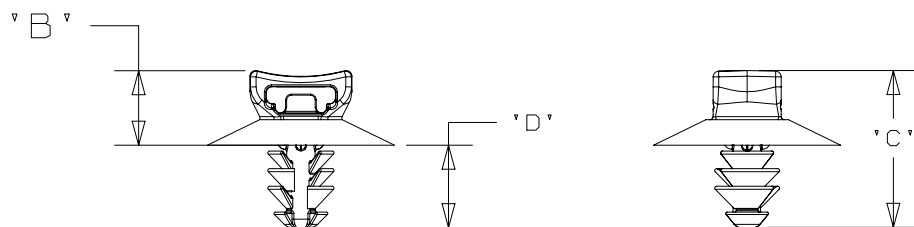


PANDUIT PART NUMBER	CABLE TIE		DIMENSIONS					MATERIAL	WEIGHT grams/100pcs
	MIN TENSILE	MAX BUNDLE	'A'	'B'	'C'	'D'	'E'		
PUM-049-2S-_30	50LBS (222N)	1.88" (48)	.65 (16.5)	.26 (6.6)	.54 (13.8)	.28 (7.2)	7.4 (188)	HEAT STABILIZED NYLON 6/6 BLACK	155

NOTES:

1. SEE CURRENT PRICE SHEET FOR PART NUMBER SUFFIX DESIGNATION FOR PACKAGE SIZE, AND COLOR.
2. (*) DIMENSIONAL VARIANCE IS POSSIBLE DUE TO MOLDING PROCESS RELATED SINK MARKS.
3. APPLICATION SPECIFICATION:
HOLE DIAMETER: 4.6 - 4.9 mm
PANEL THICKNESS: 0.7 - 3.0 mm
4. DIMENSIONS ARE INCHES AND (METRIC).



06	1/14/16	DFA	CLW	RENAMED DIMENSIONS PER PART DRAWING	GAECN03327	06	JHAC		
05B	10-6-08	PSG		DELETED AND RENAMED DIMENSIONS	GB0239LN	05B			
05A	8-22-08	PSG		REMOVED RIB FROM HEAD, UPDATED FILE NAME AND CHANGED REV TO TC REV STYLE	GB0239LN	05A			
1	8-11-06	TMSA		REVISED DIMENSIONS C FROM 7.5 D FROM 14.0	GB0239LN	1			
R	7-10-06	KLN		INITIAL RELEASE	GB0239LN	R			
REV	DATE	BY	CHK	DESCRIPTION	ECN	- R	CUST	SUP	

CAD FILENAME/LAYERS		G03151BA_DC_GB0239LN/05B	
PANDUIT		CORP. TINLEY PARK, ILLINOIS	
PUM-049-2S-_30 PUSH MOUNT/ CABLE TIE ASSEMBLY			
TOLERANCES ARE +/- .020" (.5MM)			
DRAWN BY	KLN	MAT'L:	SCALE
DATE			1:1 UNLESS NOTED
CHK'D			DRAWING NO.
			GB0239LN
			DWG A SIZE