



# FlexFit (Hybrid UL Type A + B) T8

## 7.5T8/COR/24-5CCT/FF11/G/DIM 25/1

Philips FlexFit (Hybrid UL Type A + B) lamps are designed with the customer in mind for installation flexibility. The FlexFit lamp can operate as both a plug and play (UL Type-A) and double-ended direct wire (UL Type-B). As with all Philips products, the FlexFit family of lamps are compatible with more ballasts than any manufacturer giving the customer peace of mind during installation. Additionally, the long life (50K hours) delivers reduced maintenance and replacement costs. If the ballast should fail, simply cut the ballast from the system and wire the tube directly to line voltage (120-277V)!

### Product data

General Information		Operating and Electrical	
Cap-Base	G13	Input Frequency	50 to 60 Hz
Nominal lifetime	50,000 hour(s)	Power Consumption	7.5
Switching Cycle	50,000	Lamp Current (Max)	78 mA
Lighting Technology	LED	Lamp Current (Min)	35 mA
<b>Light Technical</b>		Wattage Equivalent	17 W
Color Code	3000K/3500K/4000K/5000K/6500K	Starting Time (Nom)	0.5 s
Beam Angle (Nom)	220 degree(s)	Warm-up time to 60% light	0.5 s
Luminous Flux	1,050 1,050 1,100 1,100 1,100 lm	Power Factor (Fraction)	0.9
Luminous Efficacy (rated) (Nom)	141 lm/W	Voltage (Nom)	120-277 V
Color Designation	3000K/3500K/4000K/5000K/6500K	UL Type	UL Type A+B
Correlated Color Temperature (Nom)	3000 3500 4000 5000 6500 K	<b>Temperature</b>	
Color Consistency	<6	Ambient temperature range	-20 to +45 °C
Color rendering index (CRI)	80	T-Case Maximum (Nom)	55 °C
LLMF At End Of Nominal Lifetime (Nom)	70 %		

# FlexFit (Hybrid UL Type A + B) T8

## Controls and Dimming

Dimmable	Only with specific dimmers
----------	----------------------------

## Mechanical and Housing

Bulb Finish	Frosted
Bulb Material	Plastic
Product Length	600 mm
Bulb Shape	T8

## Approval and Application

Energy Saving Product	Yes
Approval Marks	RoHS compliance UL certificate DLC compliance
EU RoHS compliant	Yes

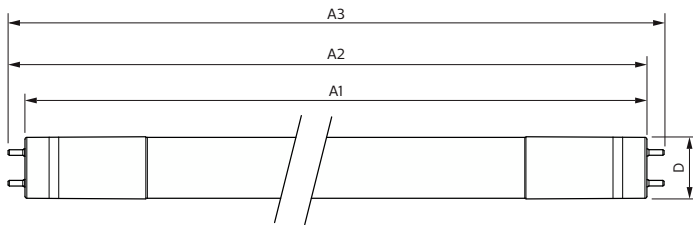
## Application Conditions

can it be used in closed luminaires	Yes
-------------------------------------	-----

## Product Data

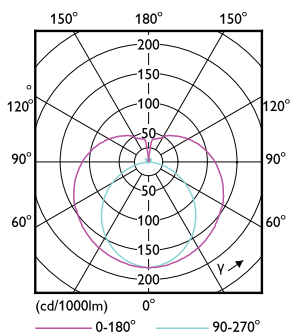
Order product name	7.5T8/COR/24-5CCT/FF11/G/DIM 25/1
Full product name	7.5T8/COR/24-5CCT/FF11/G/DIM 25/1
Order code	929003794504
Material Nr. (12NC)	929003794504
Numerator - Quantity Per Pack	1
Net Weight (Piece)	0.126 kg
EAN/UPC - Product/Case	046677588625
Numerator - Packs per outer box	25
EAN/UPC - Case	50046677588620

## Dimensional drawing

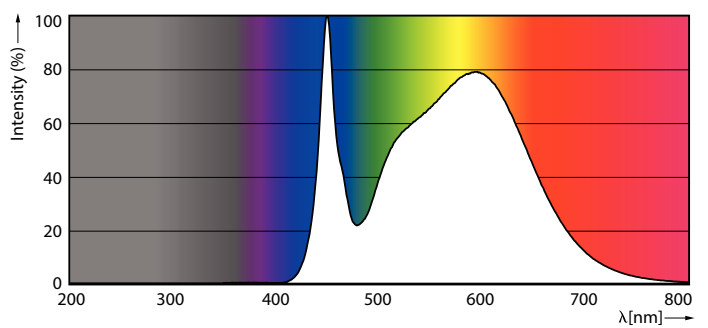


Product	D1	D2	A1	A2	A3
7.5T8/COR/24-5CCT/FF11/G/DIM 25/1	25.7 mm	28 mm	588.6 mm	595.7 mm	602.8 mm

## Photometric data



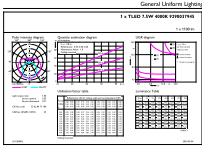
Light Distribution Diagram - 7.5T8/COR/24-5CCT/FF11/G/DIM 25/1



Spectral Power Distribution Colour - 7.5T8/COR/24-5CCT/FF11/G/DIM 25/1

# FlexFit (Hybrid UL Type A + B) T8

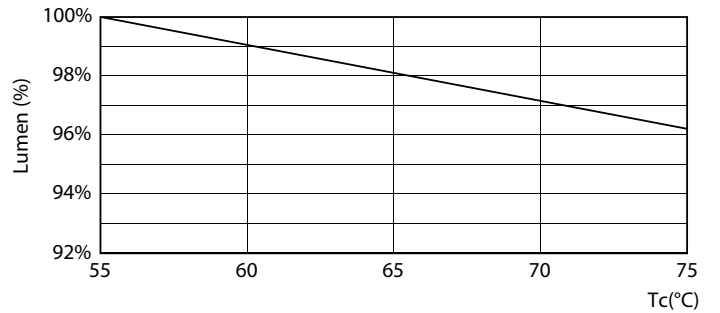
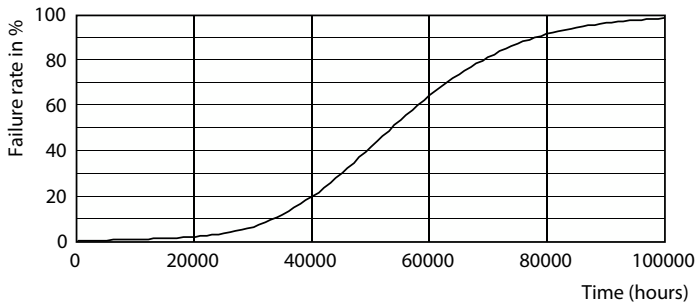
## Photometric data



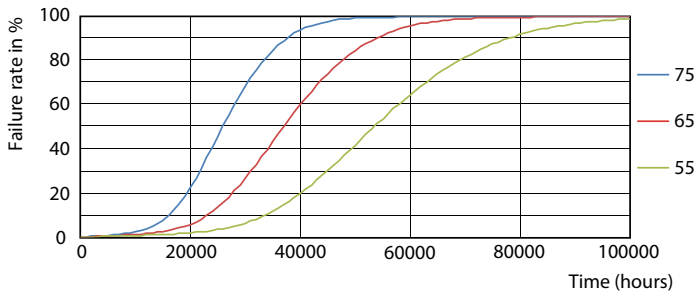
General Parameters 43 Page 10

General uniform lighting - 7.5T8/COR/24-5CCT/FF11/G/DIM 25/1

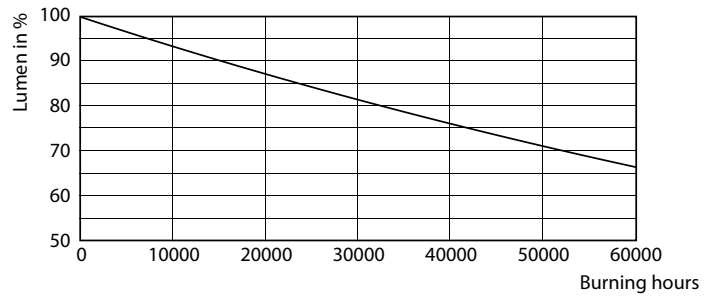
## Lifetime



Life Expectancy Diagram



Lumen Maintenance Diagram - 7.5T8/COR/24-5CCT/FF11/G/DIM 25/1

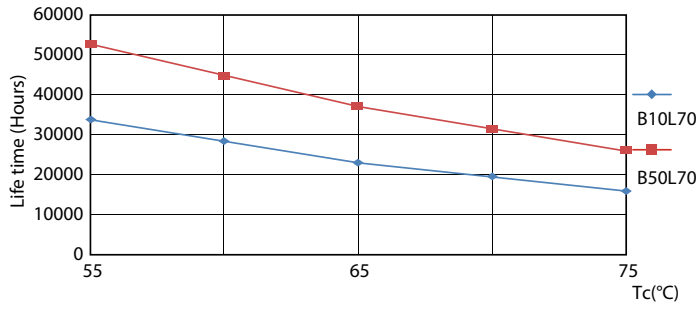


FailureRate

Lumen Maintenance Diagram - 7.5T8/COR/24-5CCT/FF11/G/DIM 25/1

## FlexFit (Hybrid UL Type A + B) T8

### Lifetime



LifetimeVsTc

