

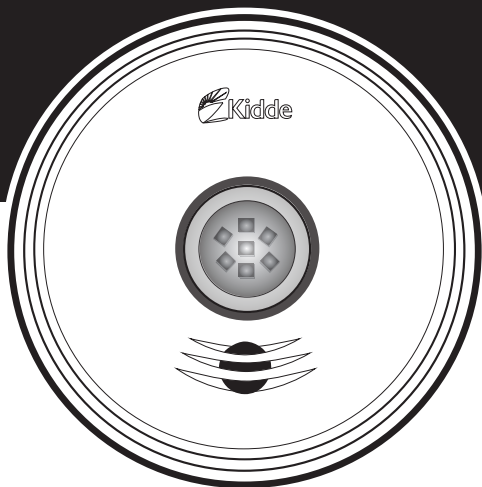


Model

P4010ACLEDSKA-2

Hardwire Photoelectric Smoke Alarm
with LED Strobe and Voice

User Guide



SMOKE ALARM

- LED STROBE
- 120 V HARDWIRE INTERCONNECT
- 10-YEAR BATTERY BACKUP
- VOICE ALARM

SIGNALISATION
SIGNALLING



LISTED
HOMOLOGUÉ

P/N: 1319-7203-01

Thank You for Purchasing this Kidde Alarm

Hardwired for 120V AC, this model features a non-replaceable, sealed-in battery backup. It also contains an LED Strobe, a voice message system and Hush® Control to temporarily silence nuisance alarms.

NOTE: Battery backup supplies power to the smoke alarm portion only. Strobe will not work without AC power.

Teach children how to respond to the alarm and that they should never play with the unit. Your Kidde Smoke Alarm was designed for use in a residential environment. It is not designed for use in a recreational vehicle (RV) or boat.

NOTE: Please take a few minutes to thoroughly read this user guide which should be saved for future reference and passed on to any subsequent owner.

The National Fire Protection Association (NFPA) and the manufacturer recommend replacing this alarm ten years from the date code on back of alarm.

Product Support: 1-800-880-6788

Please write down the below information and have this at hand when you call.

Date Code (on back): _____

Date of Purchase: _____

Where Purchased: _____

Date to Replace: _____

Contents

1. Smoke Alarm: What To Do When The Alarm Sounds	4
2. Carbon Monoxide Alarm: What To Do When The Alarm Sounds	5
3. Other Alarm Visual And Audible Indicators	6
4. Troubleshooting Guide	7
5. Introduction, Product Features & Specifications	8
6. Limitations Of Smoke Alarms	10
7. Recommended Locations	11
8. Locations To Avoid	14
9. Wiring Instructions	15
10. Operation And Testing	19
11. Recognizing Nuisance Alarms	21
12. Battery Back Up.	22
13. Permanently Disable Alarm / Discharge Battery	23
14. Cleaning Your Alarm	24
15. Good Safety Habits	25
16. Service And Warranty	29

1. Smoke Alarm: What To Do When the Alarm Sounds

Smoke alarm pattern is three long beeps with voice “Fire!,” a 1.5 second pause, and three long beeps repeating. The red LED blinks in time with alarm pattern, and the Strobe flashes every second.

- Alert small children in the home as well as anyone else that might have difficulty recognizing the importance of the alarm sounding or that might have difficulty leaving the area without help.
- Leave immediately by your escape plan. Every second counts, so don't waste time getting dressed or picking up valuables.
- In leaving, don't open any inside door without first feeling its surface. If hot, or if you see smoke seeping through cracks, don't open that door! Instead, use your alternate exit. If the inside of the door is cool, place your shoulder against it, open it slightly and be ready to slam it shut if heat and smoke rush in.
- If the escape route requires you to go through smoke, stay close to the floor where the air is cleaner. Crawl if necessary, and breathe shallowly through a cloth, wet if possible.
- Once outside, go to your selected meeting place and make sure everyone is there.
- Call the fire department from your cell phone outside, or from your neighbour's home—not from yours!
- Don't return to your home until the fire officials say that it is all right to do so.
- There are situations where a smoke alarm may not be effective to protect against fire as stated in the NFPA Standard 72. For instance:
 - a) smoking in bed
 - b) leaving children home alone
 - c) cleaning with flammable liquids, such as gasoline

NOTE: See Section 11. RECOGNIZING NUISANCE ALARMS, for nuisance alarm situations.

2. Carbon Monoxide Alarm: What To Do When the Alarm Sounds

NOTE: This is not a carbon monoxide (CO) alarm, but will receive and transmit a CO alarm signal (with voice message) from an interconnected CO or combination smoke / CO alarm.

Carbon monoxide (CO) alarm pattern is four quick beeps with voice "Warning! Carbon Monoxide" repeating every 5 seconds. The red LED blinks in time with alarm pattern. The Strobe will flash 4 times every 5 seconds.

⚠ WARNING: CARBON MONOXIDE ALARM ACTIVATION INDICATES THE PRESENCE OF CARBON MONOXIDE (CO) AT HIGH CONCENTRATIONS WHICH CAN KILL YOU.

1. Immediately move to fresh air – outdoors or by an open door/window. Do a head count to check that all persons are accounted for. Do not re-enter the premises or move away from the open door/window until the emergency services responders have arrived, the premises have been aired out, and your alarm remains in its normal condition.
2. Call your local emergency service.
(fire department or 911)

PHONE NUMBER

Never restart the source of a CO problem until it has been corrected. Never ignore the activation of the alarm!

NOTE: See Section 11. RECOGNIZING NUISANCE ALARMS, for nuisance alarm situations.

3. Other Alarm Visual and Audible Indicators

Operational Mode	Visual Indications	Audible Indications	Action/Note:
Normal (standby)	<p>AC power: Green LED on continuously during light conditions, or blink every 60 sec during dark conditions.</p> <p>DC power: Green LED blink approx every 60 sec.</p>		
Test (button press when no alarm condition is present)	<ul style="list-style-type: none"> • 4 patterns of Red/Amber/Green. • Test: Red LED blinks in time with alarm pattern. Strobe flashes every second. • Green LED fade on/off at test complete 	<ul style="list-style-type: none"> • Button press sound • Voice: "Testing, this is very loud. Press now to cancel test. 5, 4, 3, 2, 1." • 3 long beeps, Voice "Fire!", 3 long beeps, Voice "Test Complete," Power on/reset sound. • Voice "Test Canceled" if button pushed before test sequence begins. 	<p>Perform Test/Hush button press once a week to verify proper alarm operation</p> <p>* Push/release button before the countdown ends to cancel test.</p>
Smoke Alarm Memory (unit has experienced a smoke alarm event within the last hour)	Red and Amber LED alternate on 1 sec, every 10 sec.	After button push: "Smoke previously detected" only on the initiating alarm unit.	Push test button to clear Alarm Memory. NOTE: standard test sequence will follow. (Push/release button again to cancel test).
Smoke Alarm Hush Mode, (Control)	Red LED blinks every 2 sec.	After button push: "Hush Mode Activated." Smoke alarm pattern stops. (If there is too much smoke to allow Hush; Voice "Too Much Smoke, Alarm cannot be Hushed" Smoke alarm pattern continues.)	This feature is to be used only when a known alarm condition, such as smoke from cooking, activates the alarm.
Smoke Alarm Hush Mode Canceled	None	Voice message "Hush Mode Canceled."	When smoke levels drop below the alarm threshold, the voice message "Hush Mode Canceled" will occur .
Initiating Alarm, (Multiple alarms in an interconnected system)	Green LED blinks once per sec indicating that this is the unit initiating the alarm in an interconnected, multiple alarm, system.	Unit in Smoke alarm mode.	During alarm, the Initiating alarm green blinks will occur in between the red blinks.

4. Troubleshooting Guide

Trouble Condition	Visual Indications	Audible Indications	Action:
False Low Battery (AC power connected before backup battery activated)	Amber LED blinks every 5 seconds	Chirp every 60 sec, voice every 30 sec: "Activate Battery." Voice stops after 5 mins.	Rotate the alarm onto the mounting bracket to activate backup battery.
Low Battery		Chirp every 60 sec, voice every 30 sec: "Replace alarm." Voice stops after 5 mins.	* Remove, discharge, dispose unit, and replace as soon as possible.
Fault Mode		Chirp every 30 sec. Voice every 30 sec: "Error, see trouble shooting guide" After 5 mins: no voice message	* See Cleaning Your Alarm section. * Push Test/Hush button once to attempt to reset the unit. * Red LED will blink out an error code (number of blinks) when Test/Hush button is push/released once. Report the number of blinks to customer service if needed.
End of Unit Life		Double chirp every 30 sec. First 5 mins: Voice every 30 sec: "Replace alarm, press button to temporarily silence." Voice stops after 5 mins. After 7 days: Chirps continue. Voice every 30 sec for 5 mins: "Replace alarm."	* Push/release Test/Hush button to temporarily silence (see End of Unit Life Hush Mode section below) * Remove, discharge, dispose unit, and replace as soon as possible.
End of Unit Life Hush Mode (after push/release Test/Hush button during End of Life)		Voice "Temporarily Silenced." End of Unit Life chirps silenced for 24 hrs. (7 days after End of Unit Life chirps begin, the chirps cannot be silenced.)	* Remove, discharge, dispose unit, and replace as soon as possible.

If you require further information please contact Product Support at 1-800-880-6788 or write us at: Kidde Canada Inc., P.O. Box 40, Apsley, ON K0L 1A0. Our internet address is www.kiddecanada.com.

5. Introduction, Product Features and Specifications

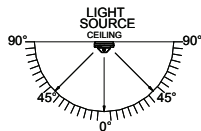
INTRODUCTION

This alarm detects products of combustion using photoelectric technology. Ten (10) years after the unit is installed, this unit will automatically alert you that it is time to replace the unit. This is called “End of Unit Life” mode. See Troubleshooting Guide. To help identify the date to replace the unit, a label has been affixed to the side of the alarm. **NOTE: AC power must be connected to obtain the full 10 year battery and unit life.**

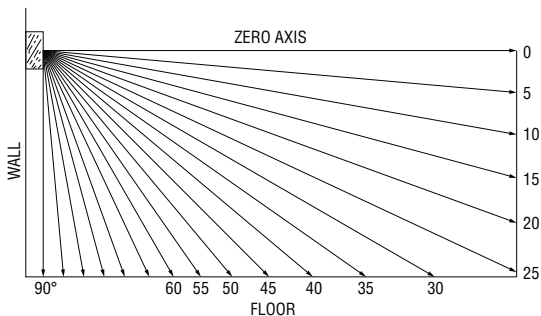
PRODUCT FEATURES AND SPECIFICATIONS:

- Temperature: Operating Range: 4.4°C (40°F) to 37.8°C (100°F)
- Humidity: Operating range: up to 95% RH non-condensing
- Audible Alarm: 85+ dB at 10' 3.0 to 3.5 KHz pulsing alarm, with voice message “Fire!”
NOTE: This is not a CO alarm, but it will receive and transmit a CO alarm signal (with voice message “Warning! Carbon Monoxide”) from an interconnected CO or combination smoke/CO alarm.
- Smoke Sensor: Photoelectric
- LED Strobe
- Voice message system
- Smoke Alarm Hush® Control
- Ambient Light Sensing
- Powered by 120V AC (60 Hz, 687 mA max) wire-in connector with sealed lithium battery backup.
- Hardwire interconnectable to other compatible alarms.
- One large, user- friendly button. (Strobe dome is the button).
- Applications: Primary Direct or Indirect and Supplementary
- Light Output: 177 Candela minimum (on axis measurement)

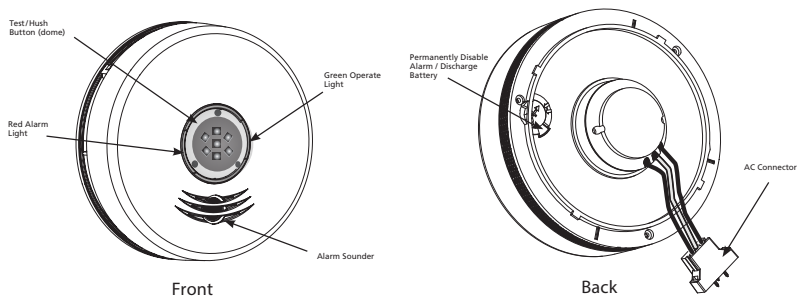
The following diagrams show that the light intensity gradually decreases as the viewing angle is increased. Use this information to determine the best location for the strobe light.



PERCENT (LIGHT INTENSITY)	ANGLE (IN DEGREES)
100	0
90	5-25
75	30-45
55	50
45	55
40	60
35	65
30	70
25	75
20	80
15	85
10	90



PRODUCT FEATURES AND SPECIFICATIONS:



6. Limitations of Smoke Alarms

⚠ WARNING: PLEASE READ CAREFULLY AND THOROUGHLY

- Life safety from fire in residential occupancies is based primarily on early notification to occupants of the need to escape, followed by the appropriate egress actions by those occupants.
- Fire warning systems for dwelling units are capable of protecting about half of the occupants in potentially fatal fires. Victims are often intimate with the fire, too old or young, or physically or mentally impaired such that they cannot escape even when warned early enough that escape should be possible. For these people, other strategies such as protection-in-place or assisted escape or rescue are necessary.
- Leading authorities recommend that both ionization and photoelectric smoke alarms be installed to help insure maximum detection of the various types of fires that can occur within the home. Ionization sensing alarms may detect invisible fire particles (associated with fast flaming fires) sooner than photoelectric alarms. Photoelectric sensing alarms may detect visible fire particles (associated with slow smoldering fires) sooner than ionization alarms.
- A battery powered alarm must have a battery of the specified type, in good condition and installed properly (This model has a sealed backup battery).
- Smoke alarms must be tested regularly to make sure the battery and the alarm circuits are in good operating condition.
- Smoke alarms cannot provide an alarm if smoke does not reach the alarm. Therefore, smoke alarms may not sense fires starting in chimneys, walls, on roofs, on the other side of a closed door or on a different floor.
- If the alarm is located outside the bedroom or on a different floor, it may not wake up a sound sleeper.
- The use of alcohol or drugs may also impair one's ability to hear the smoke alarm. For maximum protection, a smoke alarm should be installed in each sleeping area on every level of a home.

7. Recommended Locations

- For rooms larger than 250 sq. ft. the notification device should be located within 4.88 m (16') of the pillow when located in a sleeping area.
- Locate the first strobe/smoke alarm in the bedroom in which the hearing impaired individual sleeps. Try to monitor the exit path, as the bedrooms are usually farthest from the exit. Locate the first alarm in the immediate area of the bedrooms. If more than one sleeping area exists, locate additional alarms in each sleeping area (Figure 7-B).
- Locate additional strobe lights or combination smoke/strobe alarms in any lived-in room where a hearing impaired individual would need to be notified of an alarm condition.
- Locate additional alarms to monitor any stairway as stairways act like chimneys for smoke and heat.
- Locate at least one alarm on every floor level.
- Locate an alarm in every bedroom.
- Locate an alarm in every room where electrical appliances are operated (i.e. portable heaters or humidifiers).

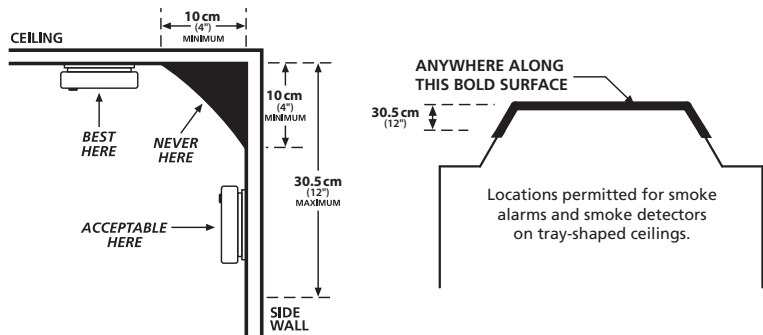
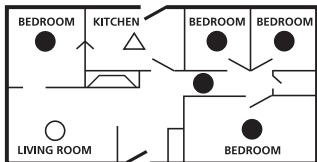


Figure 7-A

NFPA 72 states: "Smoke alarms in rooms with ceiling slopes greater than 0.3 m in 2.4 m (1 ft in 8 ft) horizontally shall be located on the high side of the room." NFPA 72 states: "A row of detectors shall be spaced and located within 0.9 m (3 ft) of the peak of the ceiling measured horizontally."

SINGLE FLOOR PLAN



- Smoke Alarms for Required Protection
- Smoke Alarms for Additional Protection
- △ Ionization Type Smoke Alarms with "Hush" Control or Photoelectric Type

MULTIPLE FLOOR PLAN

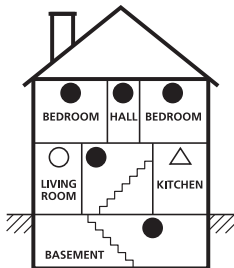


Figure 7-B

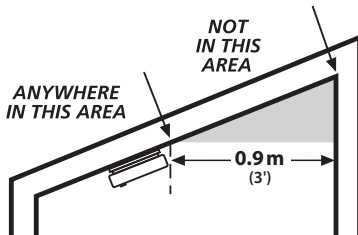
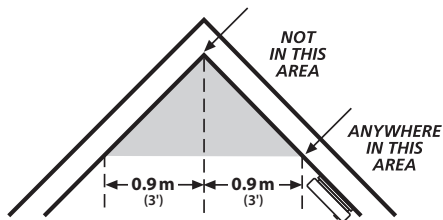


Figure 7-C

- Locate an alarm in every room where someone sleeps with the door closed. The closed door may prevent an alarm not located in that room from waking the sleeper.
- Smoke, heat, and combustion products rise to the ceiling and spread horizontally. Mounting the smoke alarm on the ceiling in the center of the room places it closest to all points in the room. Ceiling mounting is preferred in ordinary residential construction.
- For mobile home installation, select locations carefully to avoid thermal barriers that may form at the ceiling. For more details, see MOBILE HOME INSTALLATION section.
- When mounting an alarm on the ceiling, locate it at a minimum of 10 cm (4") from the side wall.
- When mounting the alarm on the wall, use an inside wall with the top edge of the alarm at a minimum of 10 cm (4") and a maximum of 30.5 cm (12") below the ceiling.
- Put smoke alarms at both ends of a bedroom hallway or large room if the hallway or room is more than 9.1 m (30ft) long.
- Install Smoke Alarms on sloped, peaked or cathedral ceilings at or within 0.9m (3 ft) of the highest point (measured horizontally).

This equipment should be installed in accordance with the National Fire Protection Association's 72 (National Fire Protection Association, Batterymarch Park, Quincy, MA 02269).

MOBILE HOME INSTALLATION

Modern mobile homes have been designed and built to be energy efficient. Install smoke alarms as recommended on the previous page. In older mobile homes that are not well insulated compared to present standards, extreme heat or cold can be transferred from the outside to the inside through poorly insulated walls and roof. This may create a thermal barrier which can prevent the smoke from reaching an alarm mounted on the ceiling. In such units, install the smoke alarm on an inside wall with the top edge of the alarm a minimum of 10 cm (4") and a maximum of 30.5 cm (12") below the ceiling.

If you are not sure about the insulation in your mobile home, or if you notice that the outer walls and ceiling are either hot or cold compared to the room air temperature, install the alarm on an inside wall. For minimum protection install at least one alarm close to the bedrooms.

 WARNING: TEST YOUR ALARM OPERATION AFTER MOBILE HOME HAS BEEN IN STORAGE OR UNOCCUPIED, AND AT LEAST ONCE A WEEK DURING USE.

8. Locations to Avoid

- Do not place in direct sunlight or install near high ambient light areas; the bright light may reduce one's ability to notice the strobe light.
- In the garage. Products of combustion are present when you start your automobile.
- Normal cooking may cause nuisance alarms. If a kitchen alarm is desired, it should have an alarm silence feature or be a photoelectric type.
- Do not install within 1.8m (6ft) of heating or cooking appliances.
- Less than 10 cm (4") from the peak of an "A" frame type ceiling.
- In an area where the temperature may fall below 4.4°C (40°F) or rise above 37.8°C (100°F), such as garages and unfinished attics.
- In dusty areas. Dust particles may cause nuisance alarm or failure to alarm.
- In very humid areas (above 95% RH, non-condensing). Moisture or steam can cause nuisance alarms.
- In insect-infested areas.
- Smoke alarms should not be installed within 0.9m (3ft) of the door to a bathroom containing a tub or shower, forced air supply ducts used for heating or cooling, ceiling or whole house ventilating fans, or other high air flow areas.
- Near lights. Electronic "noise" generated by the electronics may cause nuisance alarms.
- Do not install near vents, flues, chimneys or any forced/unforced air ventilation openings.
- Do not install near fans, doors, windows or areas directly exposed to the weather.

9. Wiring Instructions

WIRING REQUIREMENTS

- This alarm should be installed on a CSA-Listed or recognized junction box. All connections should be made by a qualified electrician and all wiring used shall be in accordance with codes having jurisdiction in your area. The multiple station interconnect wiring to the alarms must be run in the same raceway or cable as the AC power wiring. In addition, the resistance of the interconnect wiring shall be a maximum of 10 ohms.
- The appropriate power source is 120V AC Single Phase, supplied from a non-switchable circuit, which is not protected by a ground fault interrupter.
- Smoke alarms are not to be used with detector guards unless the combination (alarm and detector guard) have been evaluated and found suitable for that purpose.

⚠ WARNING: THE ALARM CANNOT BE OPERATED FROM POWER DERIVED FROM A SQUARE WAVE, MODIFIED SQUARE WAVE OR MODIFIED SINE WAVE, INVERTER. THESE TYPES OF INVERTERS ARE SOMETIMES USED TO SUPPLY POWER TO THE STRUCTURE IN OFF GRID INSTALLATIONS, SUCH AS SOLAR OR WIND DERIVED POWER SOURCES. THESE POWER SOURCES PRODUCE HIGH PEAK VOLTAGES THAT WILL DAMAGE THE ALARM.

WIRING INSTRUCTIONS FOR AC QUICK CONNECT HARNESS

- ⚠ **CAUTION:** Turn off the main power to the circuit before wiring the alarm.
- For alarms that are used as single station, DO NOT CONNECT THE RED WIRE TO ANYTHING. Leave the red wire insulating cap in place to make certain that the red wire cannot contact any metal parts or the electrical box.
- When alarms are hardwire interconnected, all interconnected units must be powered from a single circuit.

- A maximum of 24 Kidde Safety devices may be interconnected in a multiple station arrangement. The interconnect system should not exceed the NFPA interconnect limit of 12 smoke alarms and/or 18 alarms total (smoke, CO, Smoke/ CO Combination, heat, etc.). With 18 alarms interconnected, it is still possible to interconnect up to a total of 6 remote signaling devices and /or relay modules.

FUSE OR CIRCUIT BREAKER

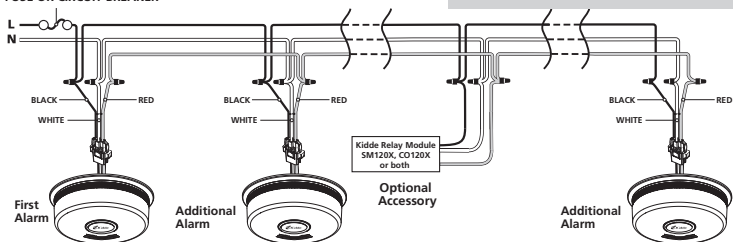


Figure 9-A, Interconnect Wiring Diagram

Wires on alarm harness: Connected to:
 Black: Hot side of AC line
 White: Neutral side of AC line
 Red: Interconnect lines (red wires) of other units in the multiple station set-up

- The maximum wire run distance between the first and last unit in an interconnected system is 305 m (1000 ft).
- Figure 9-A illustrates interconnection wiring. Improper connection will result in damage to the alarm, failure to operate, or a shock hazard.
- Make certain alarms are wired to a continuous (non-switched) power line.

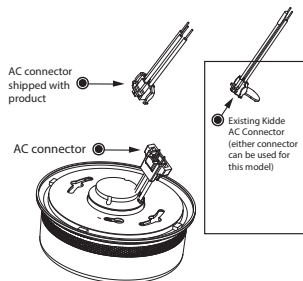


Figure 9-B

NOTE: Use standard CSA-Listed household wire (as required by local codes) available at all electrical supply stores and most hardware stores.

NOTE: AC power should be turned off at this stage.

- After selecting the proper location for your Alarm, and wiring the AC QUICK CONNECT harness as described in the WIRING INSTRUCTIONS, attach the mounting bracket to the electrical box. To ensure aesthetic alignment of the alarm with the hallway, or wall, the “A” line on the mounting bracket must be parallel with the hallway when ceiling mounted, or horizontal when wall mounted.
- Pull the AC QUICK CONNECTOR through the center hole in the mounting bracket and secure the bracket, making sure that the mounting screws are positioned in the small ends of the keyholes before tightening the screws.
- Plug the AC QUICK CONNECTOR into the wiring harness attached to the unit, making sure that the locks on the connector snap into place. Then push the excess wire back into the electrical box through the hole in the center of the mounting bracket.
- Install the alarm fully on the mounting bracket by rotating the alarm in a clockwise direction.
NOTE: The alarm will mount to the bracket in 4 positions (every 90 degrees).
NOTE: Installing the alarm on the mounting bracket will automatically activate the battery backup.
- Turn on the AC power. The green AC Power On Indicator should be lit when the alarm is operating from AC power.

NOTE: Attaching AC power first, without rotating the alarm onto the mounting bracket, will result in a false low battery trouble condition chirp and voice notification (see Troubleshooting guide). You need to activate the battery to eliminate the false low battery trouble condition chirps and voice. Attach unit to mounting bracket very soon after applying AC power to avoid false low battery notification.

NOTE: The battery activation is a one-time feature. After activation, the battery cannot be turned off, and can only be discharged at the end of unit life. If the alarm is removed from the mounting plate, the backup battery will remain active. See Permanently Disable Alarm / Discharge Battery section.

The alarm is now activated! After installation / activation, test your alarm as described in Operation and Testing section.

⚠ WARNING: FAILURE TO PROPERLY INSTALL AND ACTIVATE THIS ALARM WILL PREVENT PROPER OPERATION OF THIS ALARM AND WILL PREVENT ITS RESPONSE TO FIRE HAZARDS.

INTERCONNECT CAPABILITY

This model has AC hardwire alarm interconnect capability. When one hardwire interconnect unit sounds an alarm, all other compatible hardwire units will also alarm. This model is not designed to be interconnected with other manufacturer's products, unless otherwise specified.

AC HARDWIRE INTERCONNECT MODEL COMPATIBILITY

- The following models can be interconnected using the standard AC wiring interconnect: i12020CA, i12020ACA, i12040CA, i12040ACA, i12060CA, i12060ACA, i12010SCA, i12010SCOCA, KN-SMFM-I-CA, KN-COB-ICB-CA, KN-COSM-IBCA, KN-COB-IC-CA, KN-COSM-ICA, KN-COP-IC-CA, KN-COPE-ICA, P12040CA, Pi2000CA, Pi2010CA, SM120X, CO120X, SLED177ICA, P4010ACLEDSCA, P4010ACLEDSCOCA, P4010ACSCO-WCA, P4010ACSCOCA, P4010LACS-WCA, P4010ACSCA, P4010ACS-WCA, P4010ACLEDSCA-2, P4010ACLEDSCOCA-2.

10. Operation and Testing

OPERATION

The alarm is operating once it is activated and testing is complete. When products of combustion (smoke) are sensed, the unit sounds a loud alarm with Strobe flashing and a voice message. See Sections 1 and 2 for alarm signal descriptions.

LANGUAGE SELECTION

This unit operates in either English or French. At initial power up, the unit will default to English, and announce “English Language selected - Pour française appuyer 2 fois sur le bouton.”

To switch your language preference at any time, press the Test button twice on ALL devices you wish to connect. You should hear one beep for each button press, followed by a voice message confirming your language selection. If French is selected, the unit will announce “Langue française sélectionné - For English, press button twice.”

TESTING

Test your alarm weekly by pressing and releasing the test button (dome) quickly. A quick beep will confirm the button has been pushed followed by voice prompts that will inform you of the upcoming test sequence. See Other Alarm Visual and Audible Indicators table.

The alarm, strobe, and voice (and any interconnected units) will activate if the electronic circuitry, horn, speaker, and battery are working. If the alarm, strobe, or voice does not activate, or gives erratic or low volume sound, the unit must be replaced. **NOTE: AC power must be applied for the strobe to activate.** See Permanently Disable Alarm / Discharge Battery section to determine how to prepare the unit for shipment or disposal.

⚠ WARNING: DUE TO THE LOUDNESS OF THE ALARM, ALWAYS STAND ABOUT 0.7 M (2.5 FT) AWAY FROM THE UNIT OR USE EAR PROTECTION WHEN TESTING, AND AVOID LOOKING AT THE BRIGHT STROBE DIRECTLY, OR COVER IT WITH YOUR HAND.

⚠ WARNING: DO NOT USE AN OPEN FLAME TO TEST YOUR ALARM, YOU COULD DAMAGE THE ALARM OR IGNITE COMBUSTIBLE MATERIALS AND START A STRUCTURE FIRE.

STROBE SYNCHRONIZATION

This strobe alarm will automatically synchronize (flash at the same time) with other P4010ACLEdxx strobes that are part of the interconnected system. Synchronization will take up to 20 seconds when in alarm. **NOTE: The alarms will not synchronize during test mode.**

SMOKE ALARM MEMORY

If a unit experiences a smoke alarm event, then the condition clears and the unit stops alarming, the unit will give a visual (LED) indicator that a previous alarm has occurred within the last hour. See the Other Alarm Visual and Audible Indicators table.

AMBIENT LIGHT SENSING

In low light ambient conditions, the green LED ring fades to off, and then blinks approx every 60 seconds. This unit samples the ambient light conditions of the alarm's location and, if possible, determines a Night / Day cycle. A valid Night / Day cycle will delay unit chirps during the night until the next Day cycle begins.

CHIRPING

When chirping begins during the next Day cycle, you can temporarily silence End of Unit Life chirps by pressing the Test/Hush button. Low Battery chirps cannot be silenced.

If a valid Night / Day cycle has not been established because the unit is located in either a constantly dark or lighted location, the chirps mentioned above will not be delayed at night. Moving the unit to a different location might allow the unit to determine a valid Night / Day cycle.

⚠ WARNING: REPLACE UNIT AS SOON AS POSSIBLE WHEN IN END OF UNIT LIFE OR

LOW BATTERY MODE.

11. Recognizing Nuisance Alarms

SMOKE NUISANCE

HUSH®: If you know why the alarm is sounding, and you can verify that it is not a life threatening situation, you can push the button on the initiating unit (green LED flashing every second) to silence the alarm for 8-10 minutes. If the smoke is not too dense, that unit, and all interconnected units will silence. After the Hush® period, the smoke alarm will automatically reset and sound the alarm if particles of combustion are still present. You can use Hush® repeatedly until the air has been cleared of the condition causing the alarm.

NOTE: Dense smoke will override Hush® and sound a continuous alarm. If no fire is present, check to see if one of the reasons listed in Section 8. LOCATIONS TO AVOID may have caused the alarm. If a fire is discovered, get out and call the fire department.

This alarm is designed to minimize nuisance alarms. Cigarette smoke will not normally cause the unit to alarm, unless the smoke is blown directly into the alarm.

Combustion particles from cooking may set off the alarm if it is located too close to a cooking appliance. Large quantities of combustible particles are generated from spills or when broiling. Using the fan on a range hood which vents to the outside (non-recirculating type) will also help prevent nuisance alarms from occurring by removing these combustible products from the kitchen.

CARBON MONOXIDE (CO) NUISANCE

⚠ WARNING: THIS UNIT DOES NOT DETECT CO, BUT IT WILL TRANSMIT A CO ALARM SIGNAL FROM AN INTERCONNECTED CO OR SMOKE/CO COMBINATION ALARM. ALWAYS CONSIDER A CO ALARM EVENT AS DANGEROUS.

RESET: Pushing the button during CO alarm allows the unit to reset calculations and double check for the presence of CO. If the unit re-alarms within 6 minutes, it is sensing high levels of CO which can quickly become a dangerous situation. Move to fresh air and call 911.

⚠ WARNING: IT IS IMPOSSIBLE TO DETERMINE THE SOURCE OF A CO ALARM USING SIGHT OR SMELL. ALWAYS CONSIDER A CO ALARM EVENT AS DANGEROUS.

12. Battery Backup

NOTE: This alarm is powered with AC power, but also contains a sealed lithium battery backup system. No battery installation or replacement is necessary for the life of the alarm.

IMPORTANT: AC power must be connected to obtain the full 10 year battery and unit life. Constant exposure to high or low humidity or temperatures may reduce battery life.

⚠ WARNING: NO SERVICEABLE PARTS INCLUDED. DO NOT ATTEMPT TO OPEN THE ALARM FOR ANY REASON! DO NOT TRY TO REPAIR THE ALARM YOURSELF.

LOW BATTERY

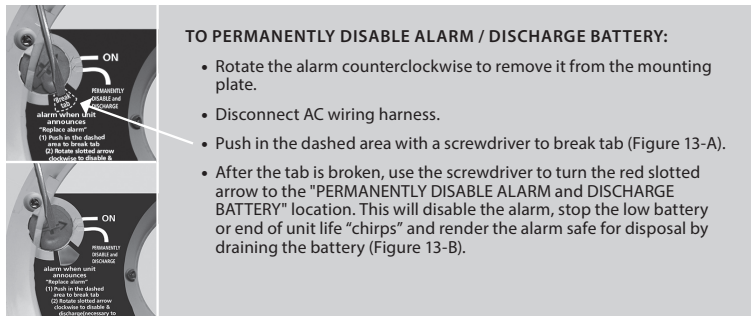
This alarm is equipped with a low battery monitor circuit. If the battery capacity can no longer provide adequate power for all alarm functions, the low battery condition will occur. See Troubleshooting Guide. The unit must be replaced within 7 days of the first occurrence of the "Low Battery Warning" to provide continuous alarm protection.

13. Permanently Disable Alarm / Discharge Battery

⚠ WARNING: FAILURE TO DISCHARGE ALARM BATTERY AS INSTRUCTED PRIOR TO DISPOSAL MAY CREATE POTENTIAL FOR LITHIUM BATTERY RELATED FIRE OR HAZARD.

⚠ WARNING: DISCHARGING THE ALARM BATTERY IS PERMANENT

- Once the alarm battery has been discharged, it cannot be reactivated!
- Once discharged, the alarm will NO LONGER DETECT SMOKE.
- Once the alarm battery is discharged, the battery is depleted and the alarm will no longer function.
- Once the alarm battery has been discharged, the alarm cannot be mounted onto the mounting plate or reactivated.



Figures 13-A (top) and 13-B (bottom)


14. Cleaning Your Alarm

YOUR ALARM SHOULD BE CLEANED AT LEAST ONCE A YEAR

You can clean the interior of your alarm (sensing chamber) by using compressed air or a vacuum cleaner hose and blowing or vacuuming through the openings around the perimeter of the alarm. The outside of the alarm can be wiped with a damp cloth. Use only water to dampen the cloth, use of detergents or cleaners could damage the alarm.

If the alarm is in Fault mode and the Red LED is blinking a fault code of 10 or 14 flashes (after a Test/Hush button push), the alarm may be in need of cleaning. After cleaning, press the Test/Hush button. If the fault does not clear, the alarm needs to be replaced.

- Never use detergent or other solvents to clean the unit.
- Avoid spraying air freshener, hair spray, or other aerosols near the alarm.
- Do not paint the unit. Paint will seal the vents and interfere with the sensor's ability to detect smoke.

 WARNING: REINSTALL THE ALARM AS SOON AS POSSIBLE TO ENSURE CONTINUOUS PROTECTION.

15. Good Safety Habits

DEVELOP AND PRACTICE A PLAN OF ESCAPE

Prepare and practice a home escape plan twice a year, including drills at night. Know two ways out of every room (door & window) and identify a meeting place outside the home where everyone will gather once they have exited the residence. When two people have reached the meeting place, one should leave to call 911 while the second person stays to account for additional family members. Establish a rule that once you're out, you never re-enter under any circumstance!

- Make a floor plan indicating all doors and windows and at least two (2) escape routes from each room. Second story windows may need a rope or chain ladder.
- Have a family meeting and discuss your escape plan, showing everyone what to do in case of fire and where to meet after they leave the house.
- Ensure that small children hear the alarm and wake when it sounds. They must wake up in order to execute the escape plan. Practice allows all occupants to test your plan before an emergency. You may not be able to reach your children. It is important they know what to do.
- Familiarize everyone with the sounds of the smoke alarm and train them to leave your home when they hear it.
- Current studies have shown smoke alarms may not awaken all sleeping individuals, and that it is the responsibility of individuals in the household that are capable of assisting others to provide assistance to those who may not be awakened by the alarm sound, or to those who may be incapable of safely evacuating the area unassisted.
- Install and maintain fire extinguishers on every level of the home and in the kitchen, basement and garage. Know how to use a fire extinguisher prior to an emergency.

FIRE PREVENTION

Never smoke in bed, or leave cooking food unattended. Teach children never to play with matches or lighters! Train everyone in the home to recognize the smoke alarm pattern and to leave the home using their escape plan when it's heard. Know how to do "Stop, Drop and Roll" if clothes catch on fire, and how to crawl low under smoke. Install and maintain fire extinguishers on every level of the home and in the kitchen, basement and garage.

SMOKE DETECTION – ARE MORE ALARMS DESIRABLE?

The required number of smoke alarms might not provide reliable early warning protection for those areas separated by a door from the areas protected by the required smoke alarms. For this reason, it is recommended that the householder consider the use of additional smoke alarms for those areas for increased protection. The additional areas include the basement, bedrooms, dining room, furnace room, utility room, and hallways not protected by the required smoke alarms. The installation of smoke alarms in attics (finished or unfinished), garages, or within 1.8 m (6 ft) of a heating or cooking appliance is not normally recommended, as these locations occasionally experience conditions that can result in improper operation.

Alarms should be installed in accordance with the National Fire Protection Association's Standard 72 (NFPA, Batterymarch Park, Quincy, MA 02269).

NFPA (NATIONAL FIRE PROTECTION ASSOCIATION)

FIRE SAFETY IN THE HOME: NFPA 72 IS INTENDED TO PROVIDE REASONABLE SAFETY FOR PERSONS IN FAMILY LIVING UNITS. REASONABLE FIRE SAFETY CAN BE PRODUCED THROUGH THE FOLLOWING THREE-POINT PROGRAM:

- (1) Minimizing fire hazards
- (2) Providing fire-warning equipment
- (3) Having and practicing an escape plan.

Where required by other governing laws, codes, or standards for a specific type of occupancy, approved single and multiple-station smoke alarms shall be installed as follows:

- (1) In all sleeping rooms and guest rooms
- (2) Outside of each separate dwelling unit sleeping area, within 6.4 m (21') of any door to a sleeping room, with the distance measured along a path of travel
- (3) On every level of a dwelling unit, including basements
- (4) On every level of a residential board and care occupancy (small facility), including basements and excluding crawl spaces and unfinished attics
- (5) In the living area(s) of a guest suite
- (6) In the living area(s) of a residential board and care occupancy (small facility)

ISED COMPLIANCE NOTICE

This device complies with Industry Canada's license-exempt RSSs. Operation is subject to the following two conditions:

- This device may not cause interference; and
- This device must accept any interference, including interference that may cause undesired operation of the device.

* This Class B digital apparatus complies with Canadian ICES-003. CAN ICES-3 (B)/NMB-3(B)

16. Service and Warranty

TEN-YEAR LIMITED WARRANTY

Kidde warrants that the enclosed alarm will be free from defects in material and workmanship or design under normal use and service for a period of ten years from the date of purchase. The obligation of Kidde under this warranty is limited to repairing or replacing the alarm or any part which we find to be defective in material, workmanship or design (part replacement only, no installation), free of charge, upon receiving the alarm with proof of date of purchase, postage and return postage prepaid, to: Kidde Canada Inc., P.O. Box 40, Apsley, ON K0L 1A0. Before shipping the product, follow the steps in the Permanently Disable Alarm / Discharge Battery section.

This warranty shall not apply to the alarm if it has been damaged, modified, abused or altered after the date of purchase or if it fails to operate due to improper maintenance or inadequate power. Any implied warranties arising out of this sale, including but not limited to the implied warranties of description, merchantability and fitness for a particular purpose, are limited in duration to the above warranty period. In no event shall the Manufacturer be liable for loss of use of this product or for any indirect, special, incidental or consequential damages, or costs, or expenses incurred by the consumer or any other user of this product, whether due to a breach of contract, negligence, strict liability in tort or otherwise. The Manufacturer shall have no liability for any personal injury, property damage or any special, incidental, contingent or consequential damage of any kind resulting from gas leakage, smoke, fire or explosion.

Since some provinces do not allow limitations of the duration of an implied warranty or do not allow the exclusion or limitation of incidental or consequential damages, the above limitations or exclusions may not apply to you. While this warranty gives you specific legal rights, you may also have other rights which vary from province to province. The above warranty may not be altered except in writing signed by both parties hereto. Your Kidde Alarm is not a substitute for property, fire, disability, life or other insurance of any kind. Appropriate insurance coverage is your responsibility. Notify your local fire department and insurance company of your smoke alarm installation.

Opening the unit will void the warranty.

QUESTIONS OR FOR MORE INFORMATION

Call Kidde Product Support line at 1-800-880-6788 or contact us at www.kiddecanada.com

Kidde Canada Inc.
P.O. Box 40, Apsley, ON K0L 1A0

Made in China

