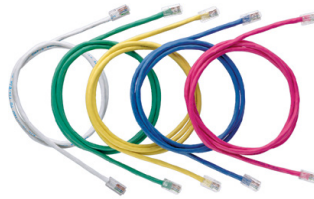


NetKey® Category 5e UTP Patch Cords

SPECIFICATIONS

Category 5e/Class D patch cords shall be constructed of UTP 24 AWG stranded copper cable and a modular plug at each end. Patch cords shall be used in all work area outlets and patch panels. Patch cords shall be wired to be compatible with both T568A and T568B wiring schemes.



TECHNICAL INFORMATION

Category 5e/Class D performance:	Exceeds ANSI/TIA-568-C.2 Category 5e and ISO 11801 Class D channel requirements at swept frequencies up to 100 MHz Meets ANSI/TIA-568-C.2 and ISO 11801 Category 5e component requirements at swept frequencies up to 100 MHz
FCC compliance:	Complies with ANSI/TIA-1096A (formerly FCC Part 68); contacts plated with 50 microinches of gold
IEC compliance:	Meets IEC 60603-7
PoE compliance:	Supports IEEE 802.3af/802.3at and proposed 802.3bt type 3 and type 4 PoE applications
c(UL)us compliance:	UL 1863 and CAN/CSA-C22.2 (UL File E129886)
RoHS compliance:	Compliant
Cable diameter:	0.215 in. (5.5mm) nominal
Flame rating:	CM rated

KEY FEATURES AND BENEFITS

100% Performance tested:	Confidence that each patch cord delivers specified performance
Patented tangle-free latch:	Prevents snags and provides easy release
Identification:	Provides identification of performance level, length, and quality control number for future traceability
Variety of colors and lengths available:	Meets individual length and color-coding requirements

APPLICATIONS

Applications include:

- Ethernet 10BASE-T, 100BASE-T (Fast Ethernet), and 1000BASE-T (Gigabit Ethernet)
- 155 Mb/s ATM, 622 Mb/s ATM, 1.2 Gb/s ATM
- Token Ring 4/16
- Voice over internet protocol (VoIP)

TX6 PLUS UTP Patch Cords

Foot lengths:	NK5EPC ^{*^Y}
Meter lengths:	NK5EPC ^{**M^Y}
NetKey Category 5e Jack Modules	
Leadframe module:	NK5E88M ^{^^Y}
Convenience pack of 25 leadframe modules:	NK5E88M ^{^^Y}
Punchdown module:	NKP5E88M ^{^^}
Convenience pack of 25 punchdown modules:	NKP5E88M ^{^^-Q}

*Feet lengths: 3, 5, 7, or 10 feet

**Meter lengths: 1, 2, 3, or 5 meters

^Colors other than Off White: BU (Blue), GR (Green), or YL (Yellow)

^^Colors: IW (Off White), EI (Electric Ivory), IG (International Gray), WH (White), BL (Black), OR (Orange), RD (Red), BU (Blue), GR (Green), or YL (Yellow)

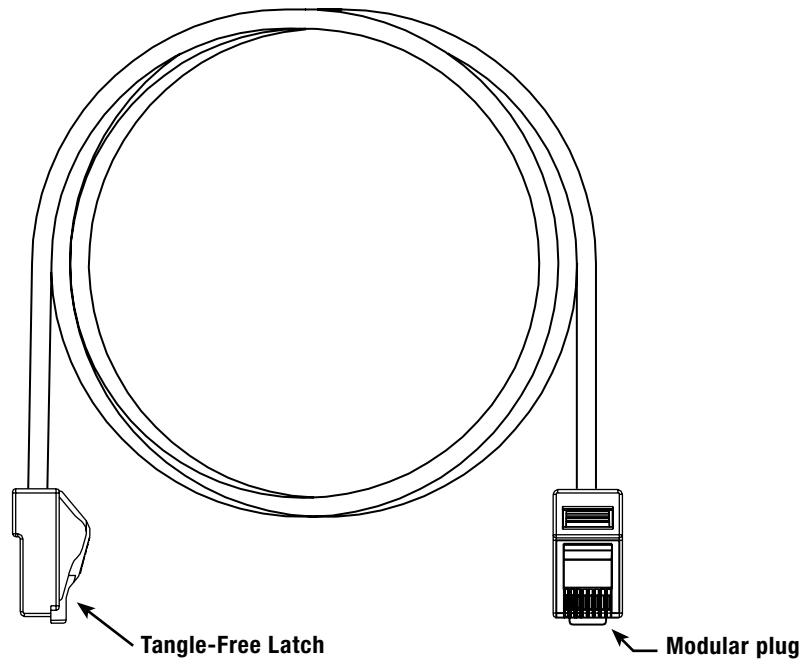
-Q indicates bulk packages with 25 pieces per pack to reduce single-use plastic



All listed part numbers are compliant with the U.S. Trade Agreements Act (TAA) for purchases shipped to customers in the United States.

NetKey® Category 5e UTP Patch Cords

ENGINEERING DRAWINGS



WORLDWIDE SUBSIDIARIES AND SALES OFFICES

PANDUIT US/CANADA
Phone: 800.777.3300

PANDUIT EUROPE LTD.
London, UK
Phone: 44.20.8601.7200

PANDUIT SINGAPORE PTE. LTD.
Republic of Singapore
Phone: 65.6305.7575

PANDUIT JAPAN
Tokyo, Japan
Phone: 81.3.6863.6000

PANDUIT LATIN AMERICA
Guadalajara, Mexico
Phone: 52.33.3777.6000

PANDUIT AUSTRALIA PTY. LTD.
Victoria, Australia
Phone: 61.3.9794.9020

For a copy of Panduit product warranties, log on to www.panduit.com/warranty

PANDUIT®

For more information
Visit us at www.panduit.com
Contact Customer Service by email: cs@panduit.com
or by phone: 800.777.3300

© 2024 Panduit Corp.
ALL RIGHTS RESERVED.
COSP563-WW-ENG
7/2024