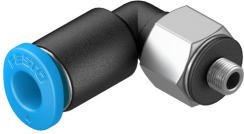


Push-in L-fitting QSML-M3-4

Part number: 153332

FESTO



 General operating condition

Data sheet

Feature	Value
Size	Mini
Nominal width	1.3 mm
Type of seal on screwed plug	Sealing ring
Mounting position	Any
Design	L-shape
Pack size	10
Structural design	Push-pull principle
Operating pressure for entire temperature range	-0.095 MPa ... 0.6 MPa
Operating pressure for entire temperature range	-0.95 bar ... 6 bar
Operating pressure for entire temperature range	-13.775 psi ... 87 psi
Temperature-dependent operating pressure	-0.095 MPa ... 1.4 MPa
Temperature-dependent operating pressure	-0.95 bar ... 14 bar
Temperature-dependent operating pressure	-13.775 psi ... 203 psi
Operating medium	Compressed air as per ISO 8573-1:2010 [7:::]
Information on operating and pilot media	Operation with oil lubrication possible
Corrosion resistance class (CRC)	1 - Low corrosion stress
LABS (PWIS) conformity	VDMA24364-B1/B2-L
Ambient temperature	-10 °C ... 80 °C
Nominal tightening torque	0.48 Nm
Tolerance for nominal tightening torque	± 55%
Product weight	3 g
Type of mounting	External hexagon, AF 8
Pneumatic connection 1	External thread M3
Pneumatic connection 2	for pneumatic tubing outside diameter 4 mm
Releasing ring color	Blue
Material of screwed plug	Brass, nickel-plated
Note on materials	RoHS-compliant
Housing material	PBT
Releasing ring material	POM
Material of tubing seal	NBR
Material of tube retaining claw	High-alloy stainless steel