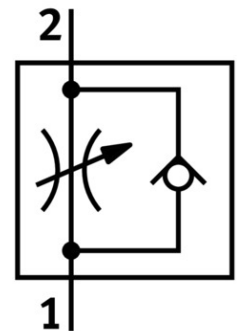


One-way flow control valve GR-QS-8

Part number: 193970

FESTO



[PDF](#) General operating condition

Data sheet

| Feature | Value |
|--|--|
| Valve function | Flow control non-return function |
| Pneumatic connection 1 | QS-8 |
| Pneumatic connection 2 | QS-8 |
| Adjusting element | Knurled screw |
| Type of mounting | Optionally: Front panel mounting With through-hole With accessories |
| Standard nominal flow rate in flow control direction | 265 l/min |
| Standard nominal flow rate in non-return direction | 500 l/min |
| Operating pressure | 0.2 bar ... 10 bar |
| Ambient temperature | -10 °C ... 60 °C |
| Housing material | PA-reinforced |
| Explosion prevention and protection | Observe the information on the certificate Zone 1 (ATEX) Zone 2 (ATEX) Zone 21 (ATEX) Zone 22 (ATEX) |
| Mounting position | Any |
| Symbol | 00991453 |
| Operating medium | Compressed air as per ISO 8573-1:2010 [7:4:4] |
| Information on operating and pilot media | Operation with oil lubrication possible (required for further use) |
| LABS (PWIS) conformity | VDMA24364-B1/B2-L |
| Temperature of medium | -10 °C ... 60 °C |
| Product weight | 23 g |
| Note on materials | RoHS-compliant |
| Seals material | NBR |
| Releasing ring material | POM |
| Knurled head material | PA-reinforced |
| Material of adjusting screw | High-alloy steel |