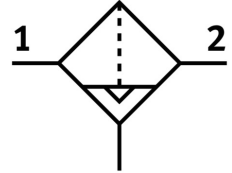



Compressed air filter MS6-LF-1/2-CRV

Part number: 529609

FESTO



 General operating condition

Data sheet

| Feature | Value |
|----------------------------------|--|
| Size | 6 |
| Series | MS |
| Mounting position | Vertical +/- 5° |
| Grade of filtration | 5 µm |
| Condensate drain | Fully automatic Manual, non-detenting |
| Structural design | Sinter filter with centrifugal separator |
| Bowl guard | Plastic bowl guard |
| Degree of condensate separation | >75 % |
| Symbol | 00991520 |
| Operating pressure | 2 bar ... 12 bar |
| Standard nominal flow rate | 3200 l/min |
| Operating medium | Compressed air as per ISO 8573-1:2010 [7:9:-] Inert gas |
| Corrosion resistance class (CRC) | 2 - Moderate corrosion stress |
| LABS (PWIS) conformity | VDMA24364-B1/B2-L |
| Storage temperature | -10 °C ... 60 °C |
| For use in the food industry | See supplementary material information |
| Air quality class at the output | Compressed air as per ISO 8573-1:2010 [6:8:4] |
| Temperature of medium | -10 °C ... 60 °C |
| Ambient temperature | -10 °C ... 60 °C |
| Pore size | <5 µm |
| Product weight | 600 g |
| Type of mounting | Optionally: Line installation With accessories |
| Pneumatic connection 1 | G1/2 |
| Pneumatic connection 2 | G1/2 |
| Note on materials | RoHS-compliant |
| Seals material | NBR |
| Compressed air filter material | PE |
| Housing material | Die-cast aluminum |
| Material of bowl | PC |
| Separating disc material | POM |