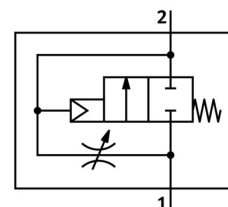


Soft start valve MS6-DL-1/2

Part number: 529817

FESTO



 General operating condition

Data sheet

| Feature | Value |
|--|--|
| Exhaust air function | With flow control option |
| Actuation type | Pneumatic |
| Mounting position | Any |
| Manual override | None |
| Structural design | Piston seat |
| Reset method | Mechanical spring |
| Type of control | Direct |
| Pilot air supply port | External |
| Flow direction | Non-reversible |
| Symbol | 00991513 |
| Valve function | 2/2 |
| Operating pressure | 4 bar ... 18 bar |
| b-value | 0.39 |
| C value | 28.97 l/sbar |
| Standard nominal flow rate | 6450 l/min |
| Operating medium | Compressed air as per ISO 8573-1:2010 [7:4:4] Inert gas |
| Information on operating and pilot media | Operation with oil lubrication possible (required for further use) |
| Corrosion resistance class (CRC) | 2 - Moderate corrosion stress |
| LABS (PWIS) conformity | VDMA24364-B1/B2-L |
| For use in the food industry | See supplementary material information |
| Temperature of medium | -10 °C ... 60 °C |
| Ambient temperature | -10 °C ... 60 °C |
| Product weight | 650 g |
| Type of mounting | Optionally: Line installation With accessories |
| Pneumatic connection 1 | G1/2 |
| Pneumatic connection 2 | G1/2 |
| Note on materials | RoHS-compliant |
| Seals material | NBR |
| Housing material | Die-cast aluminum |