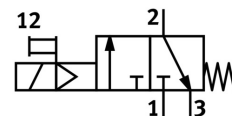


Shut off valve MS4-EE-1/4-V110-S

Part number: 538719

FESTO



General operating condition

Data sheet

Feature	Value
Structural design	Piston gate valve
Actuation type	Electrical
Exhaust air function	Without flow control option
Manual override	Detenting Non-detenting
Reset method	Mechanical spring
Type of control	Pilot-controlled
Symbol	00991008
Valve function	3/2, closed, monostable
Operating pressure	4 bar ... 10 bar
Lap	Overlap
C value	9.5 l/sbar
b-value	0.44
Standard nominal flow rate	2000 l/min
Duty cycle	100%
Coil characteristics	110 V AC: 50/60 Hz, initial power 3.0 VA, holding power 2.4 VA
Operating medium	Compressed air as per ISO 8573-1:2010 [7:4:4] Inert gas
Information on operating and pilot media	Operation with oil lubrication possible (required for further use)
Corrosion resistance class (CRC)	2 - Moderate corrosion stress
Note on materials	RoHS-compliant
LABS (PWIS) conformity	VDMA24364-B1/B2-L
Degree of protection	IP65
Ambient temperature	-10 °C ... 60 °C
For use in the food industry	See supplementary material information
Type of mounting	Optionally: Line installation With accessories
Mounting position	Any
Flow direction	Non-reversible
Product weight	289 g
Pneumatic connection 1	G1/4
Pneumatic connection 2	G1/4
Pneumatic connection 3	G1/4
Pilot air supply port	Internal

Feature	Value
Electrical connection	Form C Plug as per DIN EN 175301-803 Rectangular design
Seals material	NBR
Housing material	Die-cast aluminum