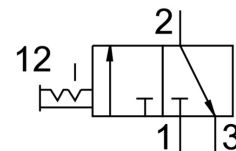


Shut off valve MS6N-EM1-1/2

Part number: 541289

FESTO



 General operating condition

Data sheet

| Feature | Value |
|--|--|
| Structural design | Rotary gate valve |
| Actuation type | Manual |
| Exhaust air function | Without flow control option |
| Type of control | Direct |
| Symbol | 00991670 |
| Valve function | 3/2, bistable |
| Operating pressure | 0 bar ... 18 bar |
| C value | 30.8 l/sbar |
| b-value | 0.57 |
| Standard nominal flow rate | 7000 l/min |
| Operating medium | Compressed air as per ISO 8573-1:2010 [7:4:4] Inert gas |
| Information on operating and pilot media | Operation with oil lubrication possible (required for further use) |
| Corrosion resistance class (CRC) | 2 - Moderate corrosion stress |
| Note on materials | RoHS-compliant |
| LABS (PWIS) conformity | VDMA24364-B1/B2-L |
| Temperature of medium | -10 °C ... 60 °C |
| Ambient temperature | -10 °C ... 60 °C |
| For use in the food industry | See supplementary material information |
| Type of mounting | Optionally: Line installation With accessories |
| Mounting position | Any |
| Flow direction | Non-reversible |
| Product weight | 580 g |
| Pneumatic connection 1 | 1/2 NPT |
| Pneumatic connection 2 | 1/2 NPT |
| Pneumatic connection 3 | 1/2 NPT |
| Seals material | TPE-U(PU) |
| Housing material | Die-cast aluminum |