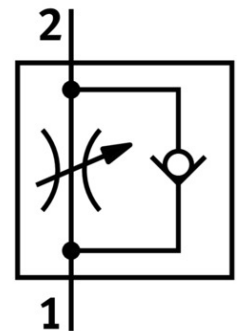



One-way flow control valve VFOE-LE-T-R14-Q6

Part number: 8068737

FESTO



 [General operating condition](#)

Data sheet

Feature	Value
Valve function	Exhaust air flow control non-return function
Pneumatic connection 1	QS-6
Pneumatic connection 2	R1/4
Actuation type	Manual
Adjusting element	Rotary knob with detent
Type of mounting	Screw-in
Standard nominal flow rate in flow control direction	400 l/min
Standard nominal flow rate in non-return direction	350 l/min ... 450 l/min
Ambient temperature	-10 °C ... 60 °C
Housing material	PBT
Explosion prevention and protection	Observe the information on the certificate Zone 1 (ATEX) Zone 2 (ATEX) Zone 21 (ATEX) Zone 22 (ATEX)
Mounting position	Any
Symbol	00991452
Width across flats	16 mm
Rotatability	360 deg/continuous swiveling not permissible
Operating pressure for entire temperature range	0.02 MPa ... 1 MPa
Operating pressure for entire temperature range	0.2 bar ... 10 bar
Operating pressure for entire temperature range	2.9 psi ... 145 psi
Standard flow rate in flow control direction 6 -> 0 bar	610 l/min
Standard flow rate in non-return direction at 6 -> 0 bar	700 l/min ... 800 l/min
Operating medium	Compressed air as per ISO 8573-1:2010 [7:4:4]
Information on operating and pilot media	Operation with oil lubrication possible (required for further use)
LABS (PWIS) conformity	VDMA24364 zone III
Cleanroom class	Class 4 according to ISO 14644-1
Temperature of medium	-10 °C ... 60 °C
Product weight	16 g

Feature	Value
Note on materials	RoHS-compliant
Cover material	PBT
Material of dynamic seals	HNBR
Threaded bolt material	Steel, galvanized
Releasing ring material	PBT
Static seal material	NBR