



Neutral conductor/PE terminal, continuous, for floor mounting, Up to 32 A, accessory for main and emergency switching-off switch 3LD2

Model	
product brand name	SETRON
product designation	Neutral conductor/PE terminal
design of the product	accessories for 3LD2 main and EMERGENCY-STOP switches
AWG number as coded connectable conductor cross section	
• minimum	14
• maximum	8
type of connectable conductor cross-sections for main contacts	
• finely stranded with core end processing	1x (1.5 ... 16 mm <sup>2</sup> )
• solid or stranded	1x (1.5...10 mm <sup>2</sup> )

Approvals Certificates		
General Product Approval	other	Environment

[Confirmation](#)



[Miscellaneous](#)

[Confirmation](#)

[Environmental Confirmations](#)

### Environment

[Environmental Confirmations](#)

### Further information

#### Information on the packaging

<https://support.industry.siemens.com/cs/ww/en/view/109813875>

#### Information- and Downloadcenter (Catalogs, Brochures,...)

<http://www.siemens.com/lowvoltage/catalogs>

#### Industry Mall (Online ordering system)

<https://mall.industry.siemens.com/mall/en/en/Catalog/product?mlfb=3LD9220-2C>

#### Service&Support (Manuals, Certificates, Characteristics, FAQs,...)

<https://support.industry.siemens.com/cs/ww/en/ps/3LD9220-2C>

#### Image database (product images, 2D dimension drawings, 3D models, device circuit diagrams, ...)

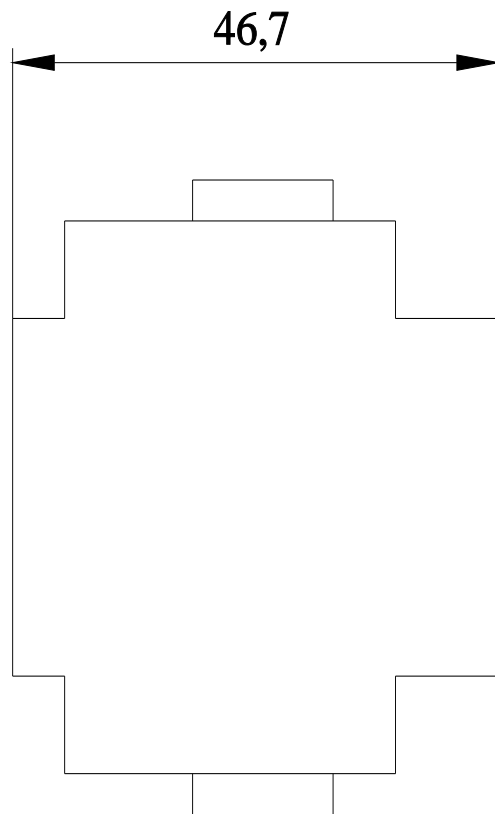
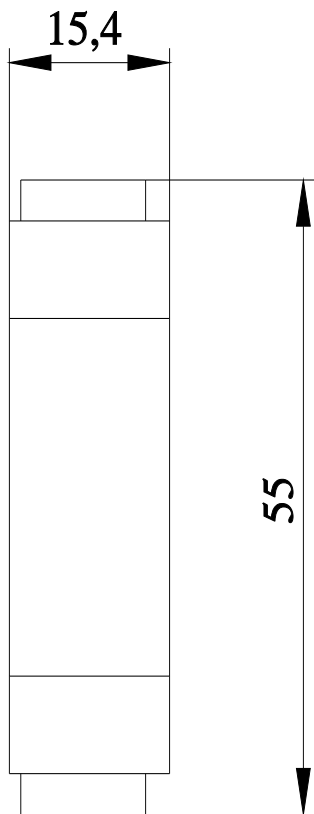
[http://www.automation.siemens.com/bilddb/cax\\_en.aspx?mlfb=3LD9220-2C](http://www.automation.siemens.com/bilddb/cax_en.aspx?mlfb=3LD9220-2C)

#### CAX-Online-Generator

<http://www.siemens.com/cax>

#### Tender specifications

<http://www.siemens.com/specifications>



---

last modified:

4/18/2024 

