








capacitor contactor, AC-6b 33 kVA_r, / 400 V, 3-pole, 110 V AC, 50 Hz, auxiliary contacts: 1 NO + 2 NC, screw terminal, size: S0

product brand name	SIRIUS
product designation	capacitor contactors
product type designation	3RT26
General technical data	
size of contactor	S0
product extension auxiliary switch	No
power loss [W] for rated value of the current	
• at AC in hot operating state per pole	3.8 W
• without load current share typical	2.5 W
type of calculation of power loss depending on pole	quadratic
insulation voltage	
• of main circuit with degree of pollution 3 rated value	690 V
• of auxiliary circuit with degree of pollution 3 rated value	690 V
surge voltage resistance	
• of main circuit rated value	6 kV
• of auxiliary circuit rated value	6 kV
maximum permissible voltage for protective separation between coil and main contacts according to EN 60947-1	400 V
shock resistance at rectangular impulse	
• at AC	8,3g / 5 ms, 5,3g / 10 ms
shock resistance with sine pulse	
• at AC	13,5g / 5 ms, 8,3g / 10 ms
mechanical service life (operating cycles)	
• of the contactor with added auxiliary switch block typical	3 000 000
electrical endurance (operating cycles)	150 000
reference code according to IEC 81346-2	Q
Substance Prohibitance (Date)	05/01/2014
Ambient conditions	
installation altitude at height above sea level maximum	2 000 m
ambient temperature	
• during operation	-25 ... +60 °C
• during storage	-55 ... +80 °C
relative humidity minimum	10 %
relative humidity at 55 °C according to IEC 60068-2-30 maximum	95 %
Environmental footprint	
Environmental Product Declaration (EPD)	Yes
Global Warming Potential [CO ₂ eq] total	106 kg
Global Warming Potential [CO ₂ eq] during manufacturing	2.47 kg
Global Warming Potential [CO ₂ eq] during operation	104 kg
Global Warming Potential [CO ₂ eq] after end of life	-0.226 kg

Main circuit	
number of poles for main current circuit	3
number of NO contacts for main contacts	3
number of NC contacts for main contacts	0
operational current at AC-6b at 690 V at ambient temperature 60 °C rated value	47.6 A
operating reactive power at AC-6b	
<ul style="list-style-type: none"> ● at 230 V at 50/60 Hz at ambient temperature 60 °C rated value 	6 ... 19 kvar
<ul style="list-style-type: none"> ● at 400 V at 50/60 Hz at ambient temperature 60 °C rated value 	11 ... 33 kvar
<ul style="list-style-type: none"> ● at 500 V at 50/60 Hz at ambient temperature 60 °C rated value 	14 ... 41 kvar
<ul style="list-style-type: none"> ● at 690 V at 50/60 Hz at ambient temperature 60 °C rated value 	19 ... 57 kvar
no-load switching frequency	
<ul style="list-style-type: none"> ● at AC 	500 1/h
operating frequency at AC-6b	
<ul style="list-style-type: none"> ● at 230 V maximum 	100 1/h
<ul style="list-style-type: none"> ● at 240 V maximum 	100 1/h
<ul style="list-style-type: none"> ● at 400 V maximum 	100 1/h
<ul style="list-style-type: none"> ● at 480 V maximum 	70 1/h
<ul style="list-style-type: none"> ● at 500 V maximum 	65 1/h
<ul style="list-style-type: none"> ● at 600 V maximum 	45 1/h
<ul style="list-style-type: none"> ● at 690 V maximum 	36 1/h
Control circuit/ Control	
type of voltage	AC
type of voltage of the control supply voltage	AC
control supply voltage at AC	
<ul style="list-style-type: none"> ● at 50 Hz rated value 	110 V
control supply voltage frequency	
<ul style="list-style-type: none"> ● 1 rated value 	50 Hz
operating range factor control supply voltage rated value of magnet coil at AC	
<ul style="list-style-type: none"> ● at 50 Hz 	0.8 ... 1.1
apparent pick-up power of magnet coil at AC	77 VA
inductive power factor with closing power of the coil	0.82
apparent holding power of magnet coil at AC	9.8 VA
inductive power factor with the holding power of the coil	0.25
closing delay	
<ul style="list-style-type: none"> ● at AC 	8 ... 40 ms
opening delay	
<ul style="list-style-type: none"> ● at AC 	4 ... 16 ms
arcing time	10 ... 10 ms
control version of the switch operating mechanism	Standard A1 - A2
residual current of the electronics for control with signal <0>	
<ul style="list-style-type: none"> ● at AC at 230 V maximum permissible 	7 mA
Auxiliary circuit	
number of NC contacts for auxiliary contacts	2
<ul style="list-style-type: none"> ● attachable 	0
<ul style="list-style-type: none"> ● instantaneous contact 	2
number of NO contacts for auxiliary contacts	1
<ul style="list-style-type: none"> ● attachable 	0
<ul style="list-style-type: none"> ● instantaneous contact 	1
operational current of auxiliary contacts at AC-12 maximum	10 A
operational current of auxiliary contacts at AC-15	
<ul style="list-style-type: none"> ● at 230 V 	6 A
<ul style="list-style-type: none"> ● at 400 V 	3 A
<ul style="list-style-type: none"> ● at 690 V 	1 A
operational current of auxiliary contacts at DC-13	
<ul style="list-style-type: none"> ● at 24 V 	6 A
<ul style="list-style-type: none"> ● at 60 V 	2 A

<ul style="list-style-type: none"> • at 110 V • at 125 V • at 220 V 	1 A 0.9 A 0.3 A				
contact reliability of auxiliary contacts	0.00000001				
UL/CSA ratings					
contact rating of auxiliary contacts according to UL	A600 / Q600				
Short-circuit protection					
design of the fuse link					
<ul style="list-style-type: none"> • for short-circuit protection of the main circuit with type of coordination 1 required • for short-circuit protection of the auxiliary switch required 	gG: 100 A (690 V, 50 kA) gG: 10 A (500 V, 1 kA)				
Installation/ mounting/ dimensions					
mounting position	+/-180° rotation possible on vertical mounting surface; can be tilted forward and backward by +/- 22.5° on vertical mounting surface				
fastening method	screw and snap-on mounting onto 35 mm DIN rail according to DIN EN 50022				
height	150 mm				
width	45 mm				
depth	155 mm				
required spacing					
<ul style="list-style-type: none"> • with side-by-side mounting at the side • for grounded parts at the side 	10 mm 10 mm				
Connections/ Terminals					
type of electrical connection					
<ul style="list-style-type: none"> • for main current circuit • for auxiliary and control circuit • at contactor for auxiliary contacts • of magnet coil 	screw-type terminals screw-type terminals Screw-type terminals Screw-type terminals				
type of connectable conductor cross-sections for main contacts					
<ul style="list-style-type: none"> • solid • stranded • solid or stranded • finely stranded with core end processing 	1x (2.5 ... 25 mm ²) 2x (1 ... 2.5 mm ²), 2x (2.5 ... 10 mm ²) 1x (2.5 ... 25 mm ²) 1x (2.5 ... 16 mm ²)				
type of connectable conductor cross-sections					
<ul style="list-style-type: none"> • for auxiliary contacts <ul style="list-style-type: none"> — solid — solid or stranded — finely stranded with core end processing • for AWG cables for auxiliary contacts 	2x (0.5 ... 1.5 mm ²), 2x (0.75 ... 2.5 mm ²), 2x 4 mm ² 2x (0.5 ... 1.5 mm ²), 2x (0.75 ... 2.5 mm ²), 2x 4 mm ² 2x (0.5 ... 1.5 mm ²), 2x (0.75 ... 2.5 mm ²) 2x (20 ... 16), 2x (18 ... 14), 2x 12				
type of minimum connectable cross-sections for main contacts at AC-6b					
<ul style="list-style-type: none"> • at 40 °C • at 60 °C 	1x 16 mm ² 1x 25 mm ²				
AWG number as coded connectable conductor cross section for main contacts	10 ... 4				
Safety related data					
product function					
<ul style="list-style-type: none"> • mirror contact according to IEC 60947-4-1 • positively driven operation according to IEC 60947-5-1 	No No				
Electrical Safety					
protection class IP on the front according to IEC 60529	IP20				
touch protection on the front according to IEC 60529	finger-safe, for vertical contact from the front				
Approvals Certificates					
General Product Approval					
 EG-Konf.		Confirmation	 CCC	 UL	
EMV	Test Certificates	Marine / Shipping	other		



[Type Test Certificates/Test Report](#)



[Miscellaneous](#)

[Confirmation](#)

Dangerous goods

Environment

[Transport Information](#)



[Environmental Confirmations](#)

Further information

Information on the packaging

<https://support.industry.siemens.com/cs/ww/en/view/109813875>

Information- and Downloadcenter (Catalogs, Brochures,...)

<https://www.siemens.com/ic10>

Industry Mall (Online ordering system)

<https://mall.industry.siemens.com/mall/en/en/Catalog/product?mlfb=3RT2628-1AF05>

Cax online generator

<http://support.automation.siemens.com/WW/CAXorder/default.aspx?lang=en&mlfb=3RT2628-1AF05>

Service&Support (Manuals, Certificates, Characteristics, FAQs,...)

<https://support.industry.siemens.com/cs/ww/en/ps/3RT2628-1AF05>

Image database (product images, 2D dimension drawings, 3D models, device circuit diagrams, EPLAN macros, ...)

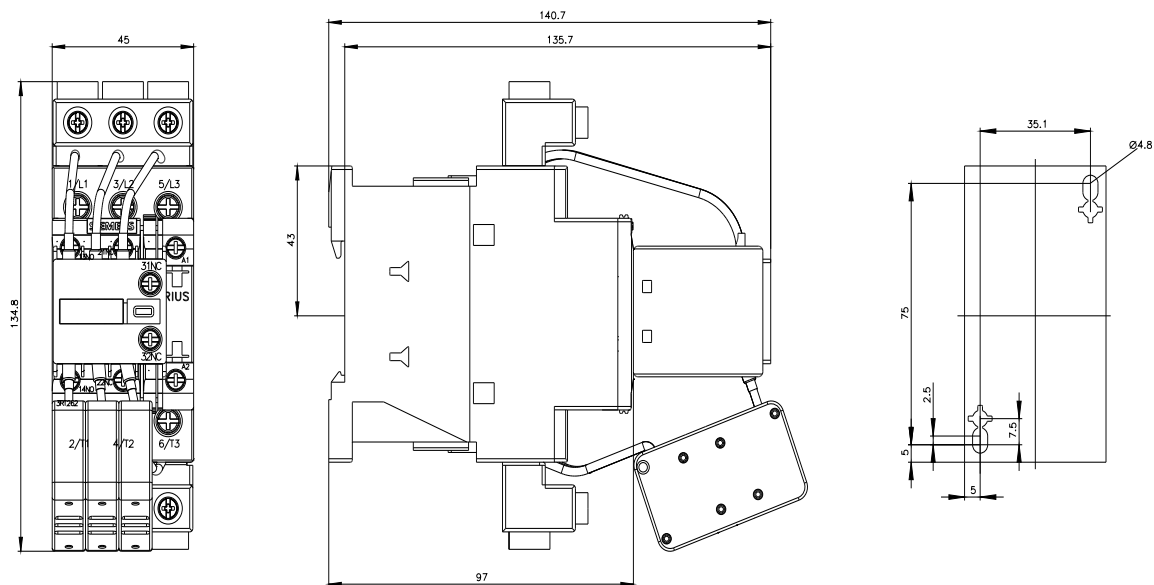
http://www.automation.siemens.com/bilddb/cax_de.aspx?mlfb=3RT2628-1AF05&lang=en

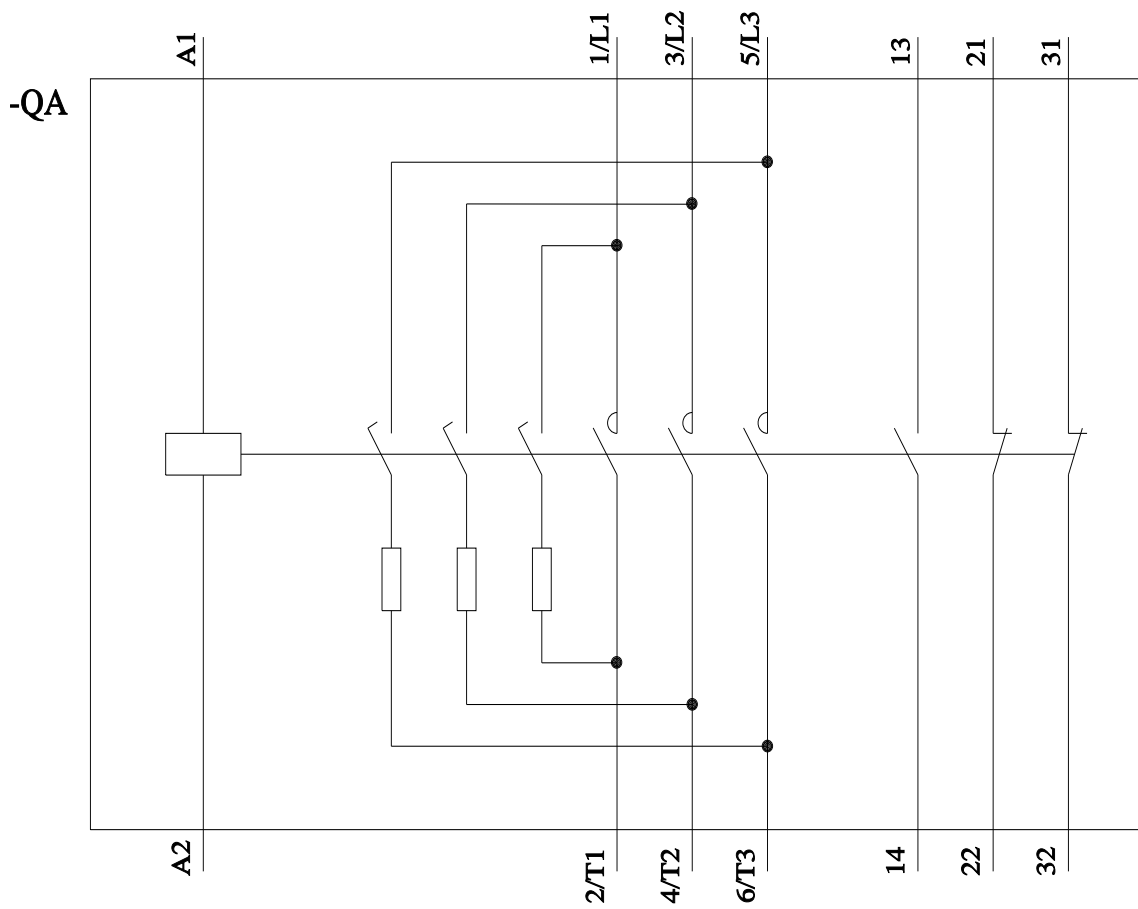
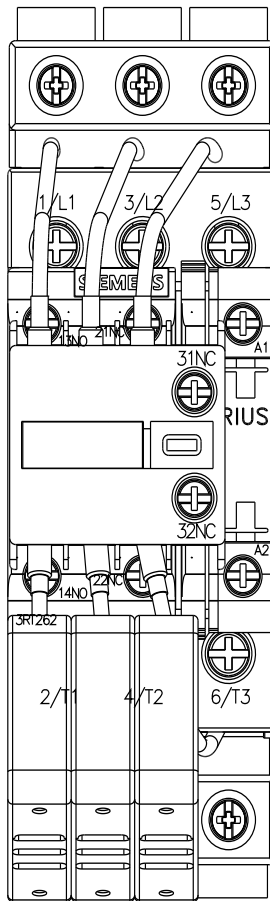
Characteristic: Tripping characteristics, I²t, Let-through current

<https://support.industry.siemens.com/cs/ww/en/ps/3RT2628-1AF05/char>

Further characteristics (e.g. electrical endurance, switching frequency)

<http://www.automation.siemens.com/bilddb/index.aspx?view=Search&mlfb=3RT2628-1AF05&objecttype=14&gridview=view1>





last modified:

3/16/2024