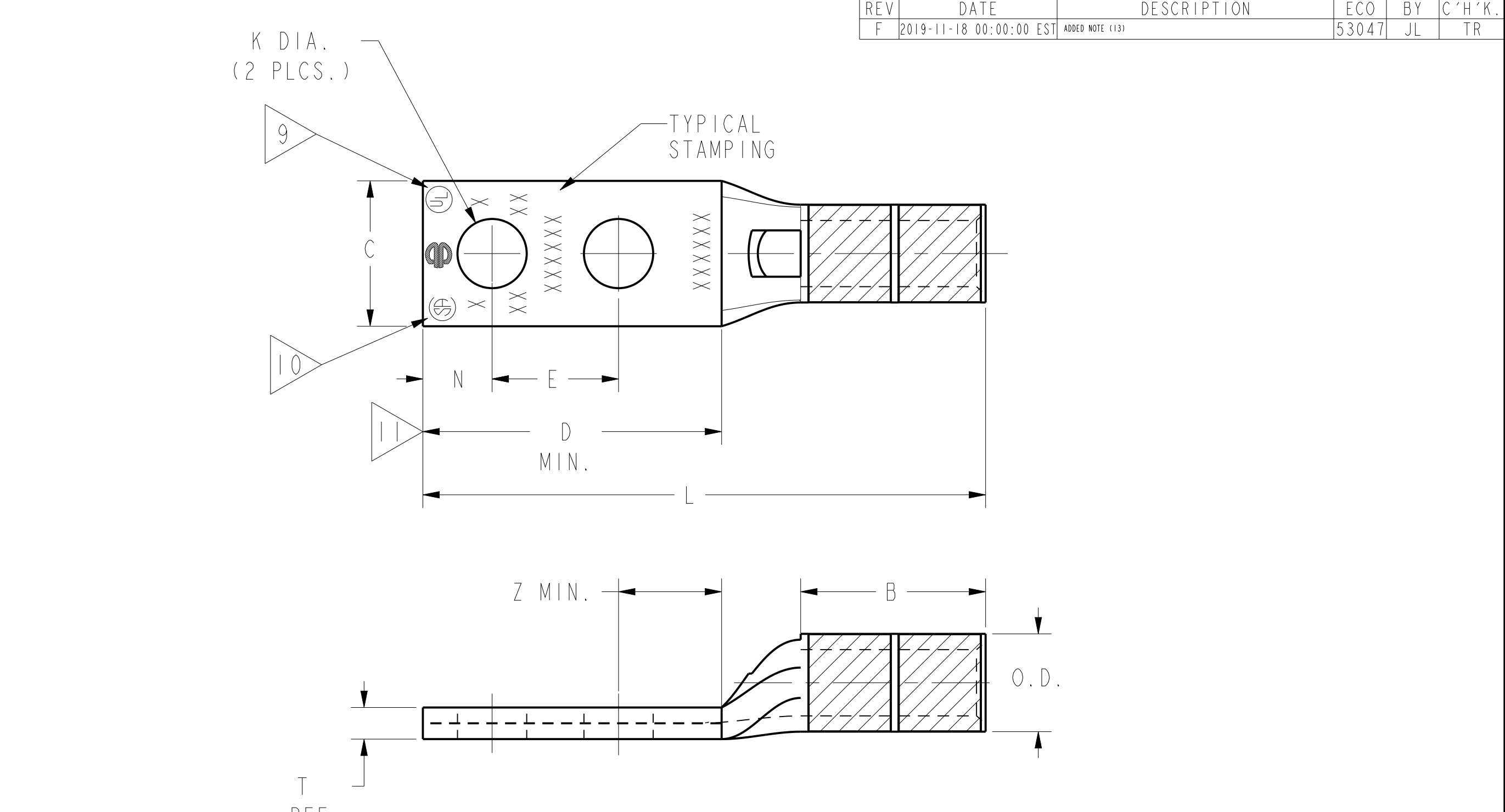


CATALOG NUMBER	STRANDED COPPER CONDUCTOR ACCOMMODATED			BOLT SIZE	METRIC BOLT SIZE	DIMENSIONS								
	CODE (AWG)	NAVY	METRIC SIZE (CLASS 2)			B	C	E	K DIA.	L	N	O.D.	T REF.	Z MIN.
YA1CL2TC14	#1 AWG	75	-----	1/4	M6	.88 [22]	.68 [17]	.62 [16]	.27 [7]	2.51 [64]	.31 [8]	.46 [12]	.10 [3]	.33 [8]
YA1CL2TC14E2				1/4	M6	.75 [19]	.27 [7]	2.64 [67]	.25 [6]	.33 [8]				
YA1C2L				5/16	M8	.88 [22]	.33 [8]	2.82 [72]	.34 [9]	.36 [9]				
YA1CL2TC38				3/8	M10	1.00 [25]	.40 [10]	3.07 [78]	.41 [10]	.42 [11]				
YA1CL2TC12E11				1/2	M12	2.00 [51]	.53 [13]	4.32 [110]	.53 [13]	.55 [14]				
YA1C2LN				1/2	M12	.88 [22]	.83 [21]	1.75 [44]	.56 [14]	4.32 [110]	.62 [16]	.46 [12]	.12 [3]	.64 [16]
YA25L2TC14	1/0 AWG	100	-----	1/4	M6	.88 [22]	.75 [19]	.62 [16]	.27 [7]	2.54 [65]	.31 [8]	.51 [13]	.12 [3]	.33 [8]
YA25L2TC14E2				1/4	M6	.75 [19]	.27 [7]	2.66 [68]	.31 [8]	.33 [8]				
YA25L2TC14E1				1/4	M6	1.00 [25]	.27 [7]	2.91 [74]	.31 [8]	.33 [8]				
YA252L				5/16	M8	.88 [22]	.33 [8]	2.85 [72]	.34 [9]	.36 [9]				
YA25L2TC38				3/8	M10	1.00 [25]	.41 [10]	3.10 [79]	.41 [10]	.42 [11]				



INSTALLATION TOOLING (# CRIMPS)

CATALOG NO.	COLOR CODE	DIE INFORMATION		MECHANICAL					HYDRAULIC					DIELESS (# CRIMPS)	WIRE STRIP LENGTH	
		DIE INDEX	TYPE	YIMRTC	OUR840	MD6 MD7	MD6--R2 MD7-34R	Y500CT PAT600 PATMD6	Y34A Y34B Y34BH	Y35, Y39, Y750, PAT750	Y46 PAT46	Y45	Y48B			Y60BHU
YA1CL2TC14 YA1CL2TC14E2 YA1C2L YA1CL2TC38 YA1CL2TC12E11 YA1C2LN	GREEN	11 375	GREEN DIE SET NEST INDENTOR	GREEN(2)	XICRT(1)	WICRT-1(1) WICVT(1)	WICRT-1(1) WICVT(1)	XICRT(1) WICRT-1(1) WICVT(1)	-----	UICRT-1(1) U4CABT(1)	UICRT-1(1) U4CABT(1)	UICRT-1(1) U4CABT(1)	-----	-----	MECHANICAL: MRC840(1) MY29-3(1) MY29-11(1) HYDRAULIC: M81KFT(1) Y4PC834(1) Y644(1)	15/16"
YA25L2TC14 YA25L2TC14E2 YA25L2TC14E1 YA252L YA25L2TC38	PINK	12 348	PINK DIE SET NEST INDENTOR	-----	X25RT(2)	W25RT(2) W25VT(2)	W25RT(2) W25VT(2)	X25RT(2) W25RT(2) W25VT(2)	A25R(1)	U25RT(1) U2CABT(1)	U25RT(1) U2CABT(1)	U25RT(1) U2CABT(1)	-----	-----	MECHANICAL: MRC840(2) MY29-3(1) MY29-11(1) HYDRAULIC: M81KFT(1) Y4PC834(1) Y644(1)	15/16"

- NOTES:
- MATERIAL: COPPER TUBING.
  - FINISH: TIN PLATED.
  - CATALOG # PT6515 ADAPTOR IS REQUIRED TO USE "U" DIES IN Y45 SERIES TOOLS.
  - CATALOG # PUADP-1 ADAPTOR IS REQUIRED TO USE "U" DIES IN Y46 SERIES TOOLS.
  - Y35P3 INDENTOR ADAPTOR REQUIRED FOR Y34PR INDENTOR.
  - PERMANENT DIE IN TOOLING.
  - DIMENSIONS IN BRACKETS [ ] ARE IN MILLIMETERS ROUNDED OFF TO THE NEAREST MILLIMETER, UNLESS OTHERWISE NOTED, AND ARE FOR REFERENCE ONLY.
  - FOR USE BY CUSTOMERS THAT HAVE THIS HYPRESS™ NO NEW Y34A HYPRESS™ TOOLS ARE BEING PROCESSED. Y34A USES A--D TYPE NEST DIES.
  - CONNECTORS ARE UL LISTED; UNDRILLED VERSIONS ARE NOT UL LISTED.
  - CONNECTORS ARE CSA CERTIFIED; UNDRILLED VERSIONS ARE NOT CSA CERTIFIED.
  - FOR UNDRILLED VERSIONS ADD SUFFIX "-U" TO END OF CATALOG NUMBER. FOR UNDRILLED VERSIONS USE D MIN. = N MAX. + E MIN. + Z MIN.
  - "X", "W-RT", "W-VT", "U", & "L" DIE SETS ARE COLOR CODED. "A", "B", AND "C" DIES ARE NOT COLOR CODED. NESTS AND INDENTOR TYPE ARE NOT COLOR CODED.
  - FINISH: TIN PLATED. THE FOLLOWING SUFFIXES DENOTE OPTIONAL PLATING TYPES. BR = BARE; LD = LEAD; NK = NICKEL; SV = SILVER. (EXAMPLE: YAV4CL2TC14NK)

CONNECTOR SIZE	TOLERANCES						
	B	C	E	K DIA.	L	N	O.D.
-8C THRU -25	±.06	±.04	±.02	±.02	±.09	±.03	±.01

TOLERANCE BLOCK

REFERENCE: SE209512  
SUPERSEDES: SC91923

TO ORDER BURNDY® PRODUCTS CALL UNITED STATES 1-800-346-4175 (LONDONDERRY, NH) CANADA: 1-800-361-6975 (QUEBEC) 1-800-387-6487 (ALL OTHER PROVINCES) FOR PRODUCT INFO: <a href="http://www.burndy.com">http://www.burndy.com</a>	HYLUG™ COPPER			
	ITEM NO:	N/A		
	CAT. NO:	YA--2L-, YA--2TC-		
	DRAWN BY:	R.NARESH	06/07/05	
	CHECKER:	K.BABU	06/07/05	
	DSN APPVL:	---	---	
MFG APPVL:	---	---		
QA APPVL:	---	---		
MKT APPVL:	---	---		
PROD FAM:	CM&R COMPRESSION	DRAWING NO:	REV	
PROJECT #:	---	SIZE:	SD035209	
DOCUMENT TYPE:	Sales	D	F	
REL LEVEL:	Released	SHEET 6 OF 18		