
RATCHETING WRENCHES

4-IN-1 BOX WRENCHES

4-SIZES IN ONE WRENCH!

RATCHETING COMBO WRENCHES

90-TOOTH RATCHET!

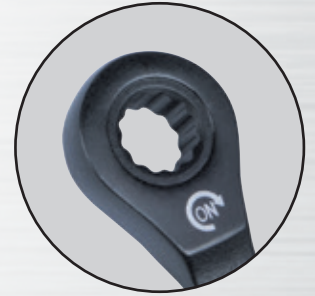
**KLEIN
TOOLS** 

RATCHETING WRENCHES

The Klein Tools Ratcheting combo wrenches feature the most common SAE and Metric sizes. The color-coded wrenches feature a 90-tooth ratchet mechanism to minimize the return angle for maximum access for a 20-Percent improvement on 72-tooth ratchets. Ergonomic handle with recessed areas for your thumb or index finger to rest naturally to reduce fatigue.



69408G



90 tooth ratcheting mechanism to minimize the return angle for maximum access



Case included with 69408G and 69408MG



69408MG



68216

Cat. No.	UPC 0-92644+	Description	Case Included	Wrench Sizes
68216	68081-6	4-in-1 Ratcheting Wrench Set, SAE, 2-Piece	NO	1/4 x 3/8, 5/16 x 7/16, 1/2 x 5/8, 9/16 x 3/4"
69408G	68082-3	90-Tooth Ratcheting Combo Wrench Set, SAE, 8-Piece	YES	5/16, 3/8, 7/16, 1/2, 9/16, 5/8, 11/16, and 3/4"
69408MG	68083-0	90-Tooth Ratcheting Combo Wrench Set, Metric, 8-Piece	YES	8, 10, 12, 13, 14, 15, 17, and 19mm

For Professionals
SINCE 1857™



See our complete line of **Socket Wrenches and Sockets**
www.kleintools.com



Visit www.kleintools.com for warnings.

© 2024 Klein Tools, Inc.
Lincolnshire, IL 60069
MKT103124 Rev. 10/24 A