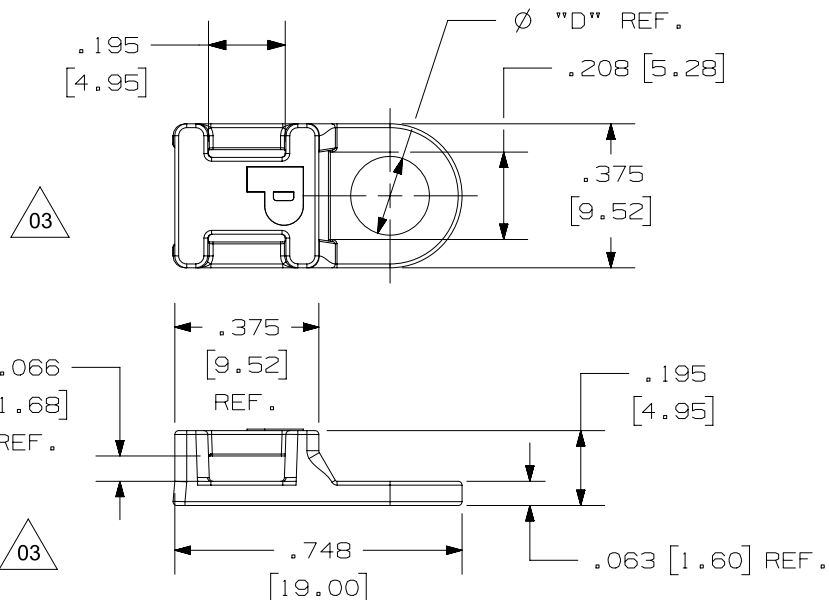


THIS COPY IS PROVIDED ON A RESTRICTED BASIS AND IS NOT TO BE USED IN ANY WAY DETRIMENTAL TO THE INTERESTS OF PANDUIT CORP.

03

PANDUIT PART NUMBER*	MAT'L SUFFIX	MATERIAL	"D"	REC. FAST. *	WEIGHT lbs/100 pcs (g)/100 pcs	USE WITH THESE CABLE TIE CROSS-SECTIONS
TA1S8	NONE	NYLON 6/6	0.170 [4.3]	#8 (M4) SCREW	0.07 [32.0]	MINIATURE INTERMEDIATE STANDARD
	-0	WEATHER RESISTANT NYLON				
	-30	HEAT STABILIZED NYLON				
	-69	FLAME RETARDANT NYLON				
TA1S10	NONE	NYLON 6/6	0.200 [5.1]	#10 (M5) SCREW		
	-0	WEATHER RESISTANT NYLON				

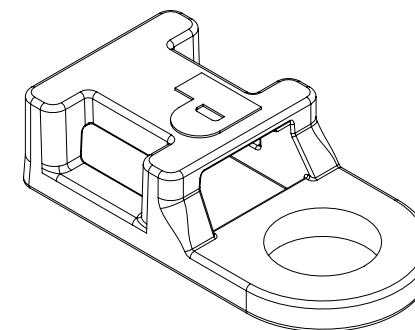


NOTES;

*1. SEE CURRENT PRICE SHEET FOR PART NUMBER SUFFIX DESIGNATION FOR PACKAGE SIZE.


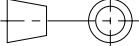
*2. HOLE DIMENSIONS SHOULD ACCOMMODATE SPECIFIED RECOMMENDED FASTENER.

*3. BAG MAY CONTAIN EXTRA PIECES TO COMPENSATE FOR VARIANCE IN THE PACKAGING PROCESS. PANDUIT ASSURES MINIMUM PIECE COUNT AS STATED ON THE BAG.



03

03

							TITLE					
							TIE ANCHOR MOUNT					
							CUSTOMER DRAWING					
							ITEM REVISION NAME					
							G03597JH/02					
							DATASET FILE NAME			<div>MATERIAL:</div> <div>SEE TABLE</div> <div>DRAWING NUMBER:</div> <div>GB0239EP</div>		
							G03597JH_DC_GB0239EP_03/02					
							UNLESS OTHERWISE SPECIFIED, DIMENSIONAL TOLERANCES ARE: IN [mm]					
							.x ± 0.05 [1.3] .xxx ± 0.01 [0.25] .xx ± 0.02 [0.5] ANGLES ± 5 °					
							 THIRD ANGLE PROJECTION					
03	7/28/2021	RVU	JADE	RMHI	REBUILD A MODEL AND UPDATE CUST. DWG. ADDED NOTES 2 AND 3.	GAECN05771						
02	7/6/02	JAD	ENG	PM	UPDATED .195 [4.95] DIMENSION LINE.	GB0239EP						
REV	DATE	BY	CHK	APR	DESCRIPTION	ECN	DRAWN BY	DATE	CHK	SCALE	SIZE	
							AJV	12/17/96	JADE	NONE	SHT 1 OF 1 A	