



Pipe with foot, length 110 mm, accessory for signaling columns, with diameter 70 mm

| | |
|--|----------------|
| product brand name | SIRIUS |
| product designation | Tube with foot |
| General technical data | |
| reference code according to EN 61346-2 | U |
| Enclosure | |
| height | 110 mm |
| width | 70 mm |
| material | PA |
| color | black |
| fastening method | floor mounting |
| length of the mounting tube | 110 mm |
| Ambient conditions | |
| ambient temperature during operation | -20 ... +50 °C |
| Approvals Certificates | |
| General Product Approval | EMV |




EG-Konf.



[Confirmation](#)

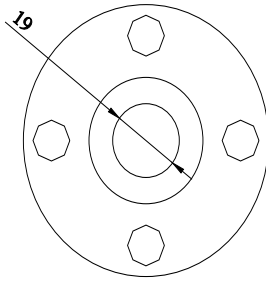
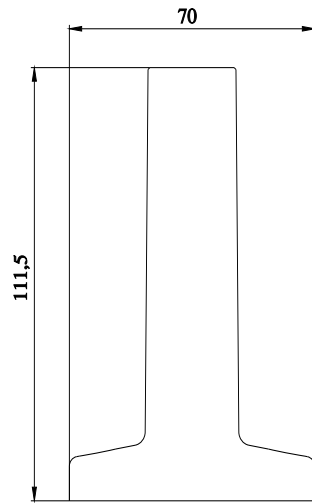


RCM

| | | |
|---|------------------------------|---|
| Marine / Shipping | other | Environment |
|  | Confirmation | Environmental Confirmations |
| PRS | | |

Further information

- Information on the packaging
<https://support.industry.siemens.com/cs/ww/en/view/109813875>
- Information- and Downloadcenter (Catalogs, Brochures,...)
<https://www.siemens.com/ic10>
- Industry Mall (Online ordering system)
<https://mall.industry.siemens.com/mall/en/en/Catalog/product?mlfb=8WD4308-0DA>
- Cax online generator
<https://support.automation.siemens.com/WW/CAXorder/default.aspx?lang=en&mlfb=8WD4308-0DA>
- Service&Support (Manuals, Certificates, Characteristics, FAQs,...)
<https://support.industry.siemens.com/cs/ww/en/ps/8WD4308-0DA>
- Image database (product images, 2D dimension drawings, 3D models, device circuit diagrams, EPLAN macros, ...)
http://www.automation.siemens.com/bilddb/cax_de.aspx?mlfb=8WD4308-0DA&lang=en



last modified:

5/29/2024 