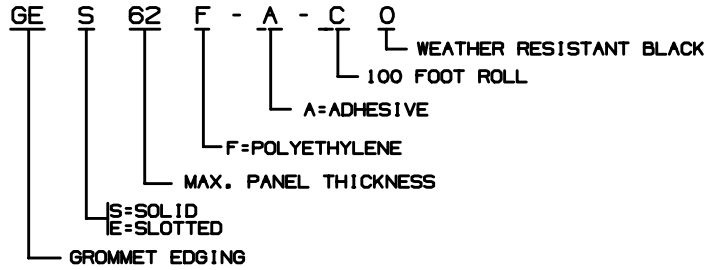


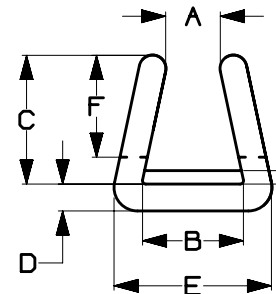
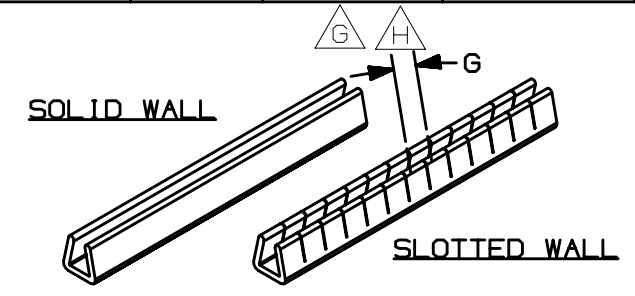
THIS COPY IS PROVIDED ON A RESTRICTED BASIS AND IS NOT TO BE USED IN ANY WAY DETRIMENTAL TO THE INTERESTS OF PANDUIT CORP.

PANDUIT PART NUMBER**	PANEL THICKNESS	A ± 0.013 (0.33)	B ± 0.015 (0.38)	C +0.020 (0.51) -0.015 (0.38)	D +0.020 (0.51) -0.015 (0.38)	E REF.	F ± TOL.	G REF.	R REF.	JIS PANEL DESIGNATION
GE_62F-A-C	0.036 - 0.062 (0.91 - 1.57)	0.031 (0.79)	0.070 (1.78)	0.130 (3.30)	0.030 (0.76)	0.131 (3.33)	0.105 +0.005 (0.13) (2.67) -0.025 (0.64)	0.150 (3.81)	0.015 - 0.055 (0.38 - 1.40)	012
GE_99F-A-C	0.062 - 0.099 (1.57 - 2.51)	0.049 (1.24)	0.108 (2.74)	0.155 (3.94)	0.030 (0.76)	0.169 (4.29)	0.125 +0.005 (0.13) (3.18) -0.025 (0.64)	0.150 (3.81)	0.015 - 0.055 (0.38 - 1.40)	016
GE_144F-A-C	0.099 - 0.144 (2.51 - 3.66)	0.080 (2.03)	0.152 (3.86)	0.192 (4.88)	0.030 (0.76)	0.213 (5.41)	0.160 +0.005 (0.13) (4.06) -0.035 (0.89)	0.150 (3.81)	0.015 - 0.055 (0.38 - 1.40)	024, 032
GE_189F-A-C	0.144 - 0.189 (3.66 - 4.80)	0.125 (3.18)	0.206 (5.23)	0.255 (6.48)	0.046 (1.17)	0.297 (7.55)	0.240 +0.005 (0.13) (6.09) -0.035 (0.89)	0.150 (3.81)	0.015 - 0.055 (0.38 - 1.40)	N/A

NOTES:

- * 1. DIM'S F & G APPLY ONLY TO SLOTTED GROMMET EDGING.
- ** 2. PART NO. EXAMPLE:


GE S 62 F - A - C 0
 WEATHER RESISTANT BLACK
 100 FOOT ROLL
 A=ADHESIVE
 F=POLYETHYLENE
 MAX. PANEL THICKNESS
 S=SOLID
 E=SLOTTED
 GROMMET EDGING
- 3. SEE CURRENT PRICE SHEET FOR PART NO. SUFFIX DESIGNATION FOR PACKAGE SIZE.
- 4. COLOR: a) NATURAL
b) -O AFTER PART NO. DENOTES WEATHER RESISTANT BLACK
- 5. THE ADHESIVE WIDTH IS TO STRETCH COMPLETELY ACROSS THE PRODUCT PROFILE.
- 6. SLOTTED WALL STYLE IS RECOMMENDED FOR INSIDE PANEL CUT OUTS.
SOLID WALL STYLE IS RECOMMENDED FOR STRAIGHT, OUTSIDE EDGES.
- 7. REELS MAY CONTAIN A MAXIMUM OF THREE SPLICES
- 8. DIMENSIONS IN PARENTHESES ARE IN METRIC.



TITLE ADHESIVE LINED GROMMET EDGING CUSTOMER DRAWING												
ITEM REVISION NAME						G03597DN/06						
DATASET FILE NAME						G03597DN_DC_GB0308BA_12/06A						
UNLESS OTHERWISE SPECIFIED, DIMENSIONAL TOLERANCES ARE: IN (mm)						PANDUIT MATERIAL: SEE NOTE #2						
.X * .XXX * .XX * ANGLES *												
THIRD ANGLE PROJECTION						DRAWING NUMBER: GB0308BA						
REV	DATE	BY	CHK	APR	DESCRIPTION	ECN	DRAWN BY CPE	DATE 02-17-93	CHK	SCALE N.T.S.	SHT 1 OF 1	SIZE A