



Neutral conductor/PE terminal, continuous, for floor mounting, Up to 32 A, accessory for main and emergency switching-off switch 3LD2

Model	
product brand name	SETRON
product designation	Neutral conductor/PE terminal
design of the product	accessories for 3LD2 main and EMERGENCY-STOP switches
AWG number as coded connectable conductor cross section	
• minimum	14
• maximum	8
type of connectable conductor cross-sections for main contacts	
• finely stranded with core end processing	1x (1.5 ... 16 mm ²)
• solid or stranded	1x (1.5...10 mm ²)

Approvals Certificates		
General Product Approval	other	Environment

[Confirmation](#)



[Miscellaneous](#)

[Confirmation](#)

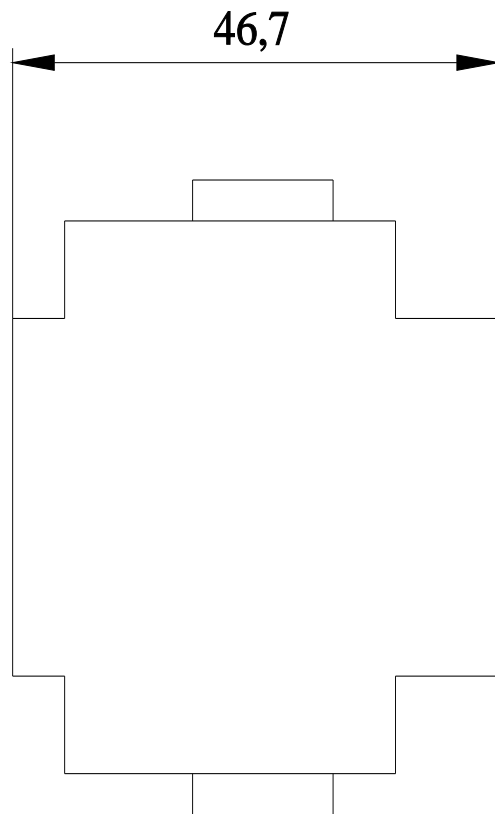
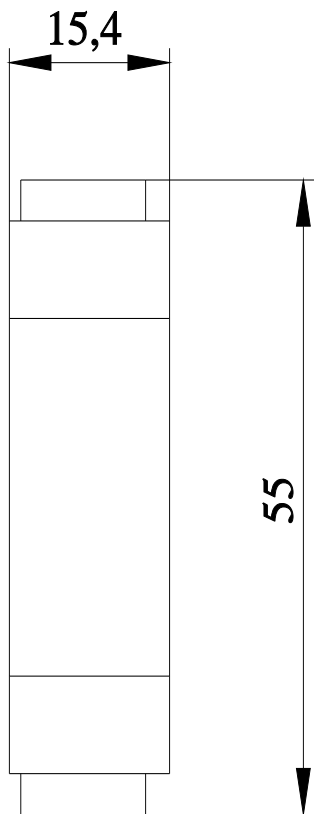
[Environmental Confirmations](#)

Environment

[Environmental Confirmations](#)

Further information

- Information on the packaging
<https://support.industry.siemens.com/cs/ww/en/view/109813875>
- Information- and Downloadcenter (Catalogs, Brochures,...)
<http://www.siemens.com/lowvoltage/catalogs>
- Industry Mall (Online ordering system)
<https://mall.industry.siemens.com/mall/en/en/Catalog/product?mlfb=3LD9220-2C>
- Service&Support (Manuals, Certificates, Characteristics, FAQs,...)
<https://support.industry.siemens.com/cs/ww/en/ps/3LD9220-2C>
- Image database (product images, 2D dimension drawings, 3D models, device circuit diagrams, ...)
http://www.automation.siemens.com/bilddb/cax_en.aspx?mlfb=3LD9220-2C
- CAX-Online-Generator
<http://www.siemens.com/cax>
- Tender specifications
<http://www.siemens.com/specifications>



last modified:

4/18/2024 