



Catalog Number
Notes
Type

Contractor Select™

REBL

LED Round High Bay

This is REBL - featuring patent pending micro-prism optics that deliver uniform and comfortable illumination across the entire space. Packaged in a sleek, yet sturdy diecast housing, the REBL's unique design redefines the round high bay by combining aesthetics, optical control, and UGR performance without wasting energy. REBL is Performance Simplified.

FEATURES:

- Patent pending precision optics deliver best-in-class uniform light control with ultra-low UGR
- Toolless field install sensors for easy control capabilities with 10% to 100% dimming
- Patented flip hook with 3/4" pendant mount comes standard
- Designed with IK10 impact rated polycarbonate lens
- Operates in environments up to 55°C ambient



Stock Part Number	Stock Part Number CI Code	UPC	Lumens	Input Watts	Color Temperature	LPW @ Max Lumen, 4000K	Voltage	Pallet Quantity
REBL ALO13 UVOLT SWW3 80CRI DWH M2	*28753U	00197590119349	12,000/15,000/18,000	80/100/120	3500K/4000K/5000K	163	UVOLT (120 - 347V)	54
REBL ALO13 UVOLT SWW3 80CRI DBL M2	*287E3G	00197590119332	12,000/15,000/18,000	80/100/120	3500K/4000K/5000K	163	UVOLT (120-347V)	54
REBL ALO16 UVOLT SWW3 80CRI DWH M2	*28754C	00197590119370	24,000/27,000/30,000	150/170/200	3500K/4000K/5000K	164	UVOLT (120 - 347V)	36
REBL ALO16 UVOLT SWW3 80CRI DBL M2	*28754E	00197590119394	24,000/27,000/30,000	150/170/200	3500K/4000K/5000K	164	UVOLT (120/347V)	36
REBL ALO13 XVOLT SWW3 80CRI DWH M2	*28754V	00197590119523	12,000/15,000/18,000	80/99/118	3500K/4000K/5000K	163	XVOLT (277-480V)	54
REBL ALO16 XVOLT SWW3 80CRI DWH M2	*28754X	00197590119554	24,000/27,000/30,000	149/171/192	3500K/4000K/5000K	164	XVOLT (277-480V)	36

More configurations are available. Click here or visit www.acuitybrands.com and search for REBL.

Accessories (Field installable only): Order as separate catalog number		
RBAY BLDE40WCP M4	Field Installable 40 watt emergency battery pack	Mounting:
TLS WH	Field Installable PIR Sensor, White	REBLSMB1 DWH M10
TLS BL	Field Installable PIR Sensor, Black	REBLSMB1 DBL M10
REBLPCLR1 U	Clear polycarbonate reflector for ALO13	REBLSMB2 DWH M10
REBLPCLR2 U	Clear polycarbonate reflector for ALO16	REBLSMB2 DBL M10
REBLPCLR1 J10	Clear polycarbonate reflector for ALO13, job pack 10	LPM
REBLPCLR2 J10	Clear polycarbonate reflector for ALO16, job pack 10	JCBLS120
REBLPSB DWH M8	Pendant splice box, gloss white †	JCBLS240
REBLPSB DBL M8	Pendant splice box, matte black †	



Specifications

INTENDED USE:

Ideal one-for-one replacement of traditional HID and fluorescent lighting. For use in Industrial applications including warehousing, retail spaces, and manufacturing environments with mounting heights ranging from 10' +. **Certain airborne contaminants can diminish integrity of acrylic and LED's.** [Click here for Polycarbonate Environmental Compatibility table for suitable uses.](#)

Certain airborne contaminants may adversely affect the functioning of LEDs and other electronic components, depending on various factors such as concentrations of the contaminants, ventilation, and temperature at the end-user location. [Click here for a list of substances that may not be suitable for interaction with LEDs and other electronic components.](#)

CONSTRUCTION:

REBL features patent pending micro-prism optics that deliver uniform and comfortable illumination across the entire space. The rugged diecast aluminum housing and the polycarbonate lens are IK10 impact rated, providing protection from flying objects without the need for a wireguard. The Contractor Select fixtures are available with 3500K/4000K/5000K switchable CCTs and lumen output up to 30,000 lumens.

FINISH:

Black and white finishes available.

ELECTRICAL:

High-efficiency LEDs provide up to 187 LPW. Thermally protected driver standard with 0-10V continuous dimming allowing for 10% to 100% dimming capability. Fixture comes with standard 6' power cord and 6' low voltage dimming cords. Projected lumen maintenance L70 > 100,000 hours. Luminaire surge protection level: designed to withstand up to 6kV/3kA per ANSI C82.77-5-2015.

INSTALLATION:

Fixture includes patented flip hook with safety latch. The hook can be flipped down and mounted with the 3/4 inch threaded pendant mount. Optional cast loop or surface mount bracket available.

LISTINGS:

UL/C-UL listed to US and Canadian safety standards. Wet location listed. IP66, NEMA 4X, and NSF Splash Zone 2 rated. Designed for use in ambient temperatures ranging from -40°C to 55°C when suspended 18" from ceiling.

DesignLights Consortium® (DLC) Premium qualified product. Not all versions of this product may be DLC Premium qualified. Please check the DLC Qualified Products List at www.designlights.org/QPL to confirm which versions are qualified.

WARRANTY:

5-year limited warranty. This is the only warranty provided and no other statements in this specification sheet create any warranty of any kind. All other express and implied warranties are disclaimed. Complete warranty terms located at: www.acuitybrands.com/support/warranty/terms-and-conditions

Note: Actual performance may differ as a result of end-user environment and application. All values are design or typical values, measured under laboratory conditions at 25 °C. Specifications subject to change without notice.

Accessories



LPM



Pendant Box (REBLPSB)



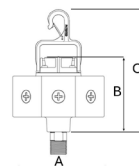
Surface Mount Bracket (REBLSMB)



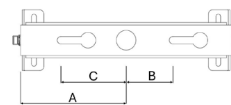
REBL with RBAY BLDE40WCP M4 (field installable only)



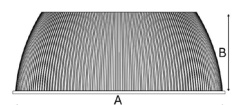
Polycarbonate Reflector (REBLPCR)



REBLPSB XXX M8 (must specify color)

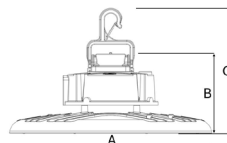


REBLSMBX XXX M10 (must specify size and finish)



Polycarbonate Reflector available on AL013 and AL016 models

Accessory	A	B	C	For use with
REBLPSB	5.75"	4.69"	9.07"	All Sizes
REBLSMB1	4.82"	1.97"	3.11"	AL013
REBLSMB2	6.07"	1.97"	3.11"	AL016
REBLPCR1	16.14"	6.16"		AL013
REBLPCR2	18.70"	6.16"		AL016



REBL with hook shown in the up position

Lumens package	A	B	C	Weight
	Dimensions shown in inches (centimeters)			Shown in pounds (kg)
AL013	12.2 (31)	4.8 (12.2)	7.5 (19.1)	6.2 (2.8)
AL016	14.6 (37.1)	5 (12.7)	7.7 (19.6)	8.2 (3.7)

Battery Operational Data

Model	Input Voltage	Input Current	Input Power	Emergency Time	Output Voltage	Output power	Battery Type	Ambient Temp
RBAY BLDE40WCP M4	100-347Vac 50/60Hz	≤200mA	15W	90minutes	170Vdc	40W	Li-ion	5°C-50°C