
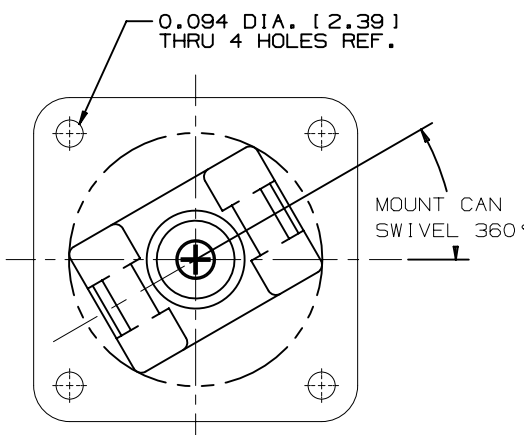
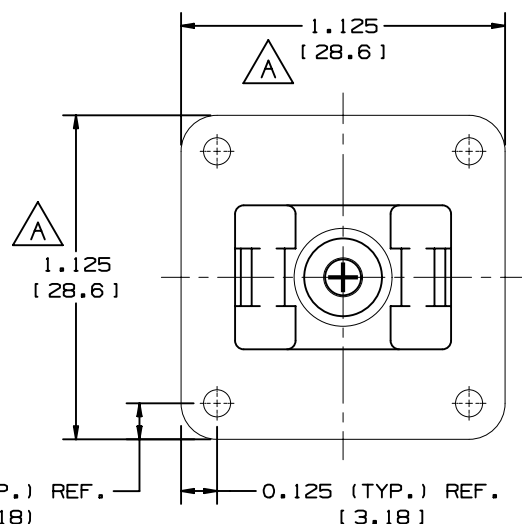


THIS COPY IS PROVIDED ON A RESTRICTED BASIS AND IS NOT TO BE USED IN ANY WAY DETRIMENTAL TO THE INTERESTS OF PANDUIT CORP.

NO WARRANTY, EXPRESSED OR IMPLIED, IS MADE BY PANDUIT WITH RESPECT TO ADHESIVE BOND PERFORMANCE. AMONG OTHER THINGS, THE CONDITIONS UNDER WHICH THESE MOUNTS MAY BE APPLIED, THE SURFACE TO WHICH THEY MAY BE APPLIED, AND/OR THE ADHESIVES THAT MAY BE USED ARE BEYOND PANDUIT'S CONTROL.

PANDUIT PART NUMBER*	WEIGHT lbs/100 pcs (g)/100 pcs	USE WITH ANY OF THESE CABLE TIE CROSS-SECTIONS
ASMS-A	0.7 [318] 	M, I, S

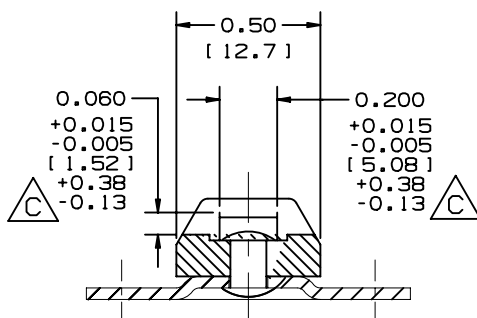
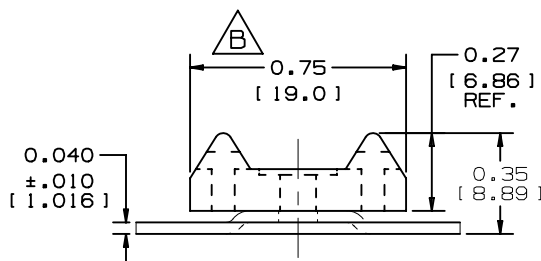


TO APPLY MOUNTS:

1. CLEAN BOTH SURFACES TO BE JOINED.
2. FOLLOW THE ADHESIVE SUPPLIERS DIRECTIONS FOR SURFACE PREPERATION AND APPLICATION.
3. ALLOW SUFFICIENT CURE TIME BEFORE INSTALLING THE BUNDLE.

NOTES:

- *1. SEE CURRENT PRICE SHEET FOR PART NUMBER SUFFIX DESIGNATION FOR PACKAGE SIZE.
2. MATERIAL:
MOUNT-NYLON 6/6, NATURAL
RIVET-ALUMINUM
BRACKET-ALUMINUM
3. DESIGNED FOR MOUNTING WITH EPOXY ADHESIVE OR OTHER ADHESIVES SUITABLE FOR BONDING ALUMINUM. THE ADHESIVE TO BE SUPPLIED BY USER.
4. CABLE TIE CROSS-SECTION CODE:
M - MINIATURE
I - INTERMEDIATE
S - STANDARD



REV	DATE	BY	CHK	APR	DESCRIPTION	ECN
02A	10-01-24	BDK	JADE	DJSL	D. CORRECTED WEIGHT C. ADDED METRIC TOLERANCE B. CORRECTED METRIC CONVERSION A. CORRECTED METRIC CONVERSION	006214 r00

TITLE				ASMS-A ADHESIVE SWIVEL MOUNT			
CUSTOMER DRAWING							
ITEM REVISION NAME				G03597DY/02			
DATASET FILE NAME				G03597DY_DC_GB0239DR/02A			
UNLESS OTHERWISE SPECIFIED, DIMENSIONAL TOLERANCES ARE: IN [mm]				MATERIAL:			
.x ± 0.03 [.78]				.xxx ± 0.030 [0.78]			
.xx ± 0.03 [.78]				ANGLES ± 5°			
THIRD ANGLE PROJECTION				SEE NOTES			
DRAWING NUMBER:				GB0239DR			
DRAWN BY				SHT 1 OF 1			
DATE				A			
CHK							
SCALE							
CJG							
6/19/96							
--							
NONE							